

Product datasheet for **TA501129M**

PKA R2 (PRKAR2A) Mouse Monoclonal Antibody [Clone ID: OTI1A7]

Product data:

Product Type:	Primary Antibodies
Clone Name:	OTI1A7
Applications:	FC, IF, IHC, WB
Recommended Dilution:	WB 1:2000, IHC 1:50, IF 1:100, Flow 1:100
Reactivity:	Human, Mouse, Rat
Host:	Mouse
Isotype:	IgG1
Clonality:	Monoclonal
Immunogen:	Full length human recombinant protein of human PRKAR2A (NP_004148) produced in HEK293T cell.
Formulation:	PBS (pH 7.3) containing 1% BSA, 50% glycerol and 0.02% sodium azide.
Concentration:	0.5 mg/ml
Purification:	Purified from mouse ascites fluids or tissue culture supernatant by affinity chromatography (protein A/G)
Conjugation:	Unconjugated
Storage:	Store at -20°C as received.
Stability:	Stable for 12 months from date of receipt.
Predicted Protein Size:	45.3 kDa
Gene Name:	protein kinase cAMP-dependent type II regulatory subunit alpha
Database Link:	NP_004148 Entrez Gene 19087 Mouse Entrez Gene 29699 Rat Entrez Gene 5576 Human P13861



[View online »](#)

Background:

cAMP is a signaling molecule important for a variety of cellular functions. cAMP exerts its effects by activating the cAMP-dependent protein kinase, which transduces the signal through phosphorylation of different target proteins. The inactive kinase holoenzyme is a tetramer composed of two regulatory and two catalytic subunits. cAMP causes the dissociation of the inactive holoenzyme into a dimer of regulatory subunits bound to four cAMP and two free monomeric catalytic subunits. Four different regulatory subunits and three catalytic subunits have been identified in humans. The protein encoded by this gene is one of the regulatory subunits. This subunit can be phosphorylated by the activated catalytic subunit. It may interact with various A-kinase anchoring proteins and determine the subcellular localization of cAMP-dependent protein kinase. This subunit has been shown to regulate protein transport from endosomes to the Golgi apparatus and further to the endoplasmic reticulum (ER).

Synonyms:

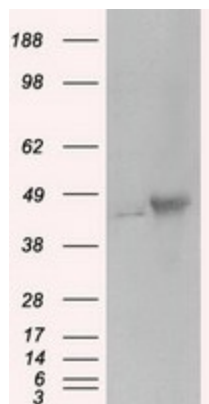
PKR2; PRKAR2

Protein Families:

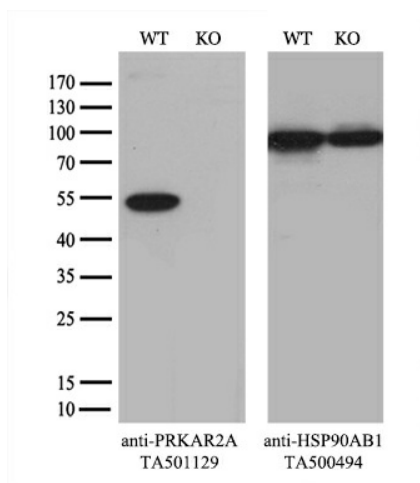
Druggable Genome

Protein Pathways:

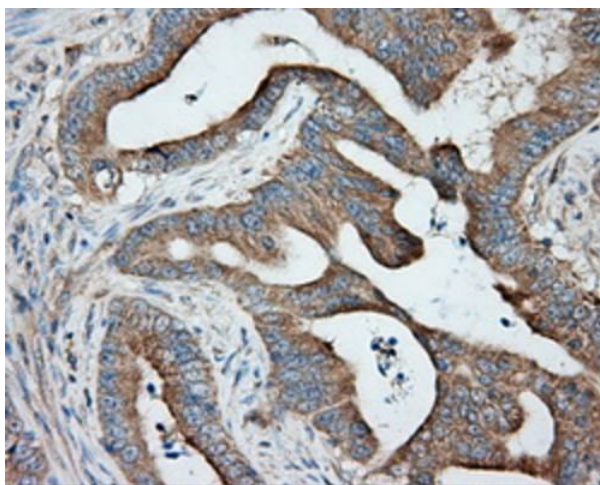
Apoptosis, Insulin signaling pathway

Product images:


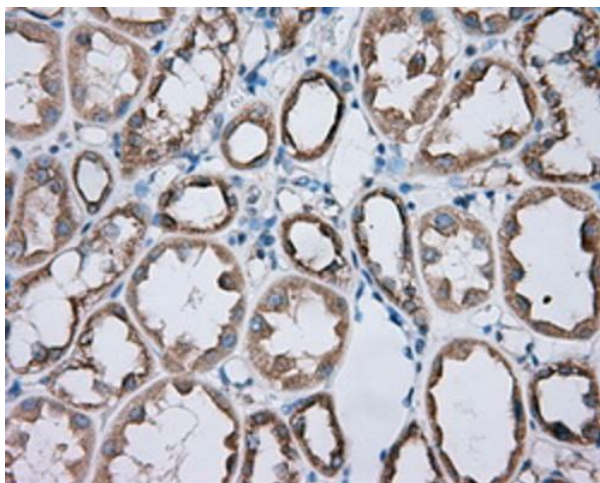
HEK293T cells were transfected with the pCMV6-ENTRY control (Left lane) or pCMV6-ENTRY PRKAR2A ([RC220376], Right lane) cDNA for 48 hrs and lysed. Equivalent amounts of cell lysates (5 ug per lane) were separated by SDS-PAGE and immunoblotted with anti-PRKAR2A. Positive lysates [LY401337] (100ug) and [LC401337] (20ug) can be purchased separately from OriGene.



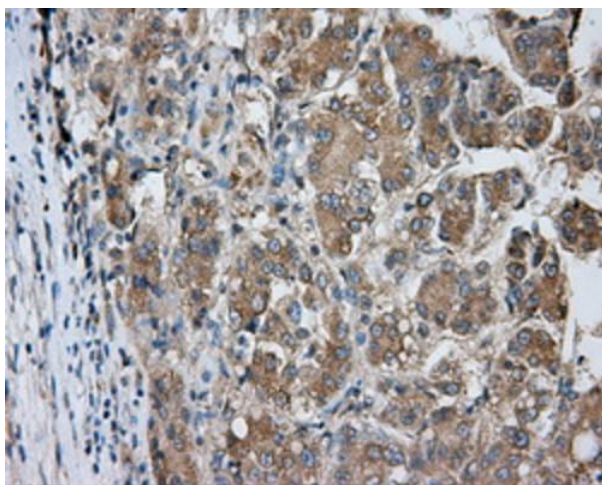
Equivalent amounts of cell lysates (10 ug per lane) of wild-type HeLa cells (WT, Cat# LC810HELA) and PRKAR2A-Knockout HeLa cells (KO, Cat# [LC812853]) were separated by SDS-PAGE and immunoblotted with anti-PRKAR2A monoclonal antibody [TA501129] (1:2000). Then the blotted membrane was stripped and reprobed with anti-HSP90 antibody as a loading control.



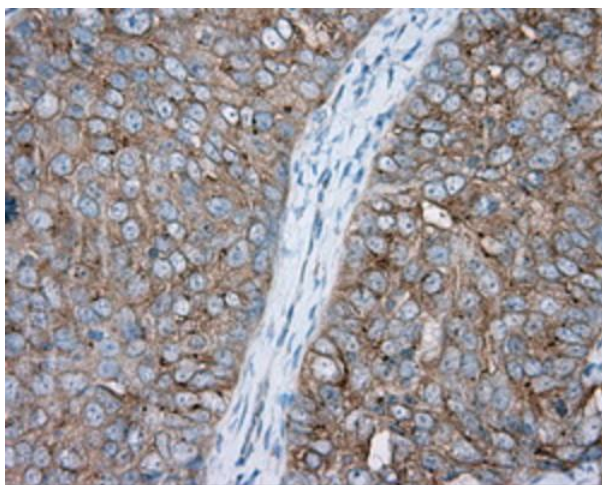
Immunohistochemical staining of paraffin-embedded Adenocarcinoma of colon tissue using anti-PRKAR2A mouse monoclonal antibody. Heat-induced epitope retrieval by EDTA solution buffer pH 8.0 at 120°C for 3 min.



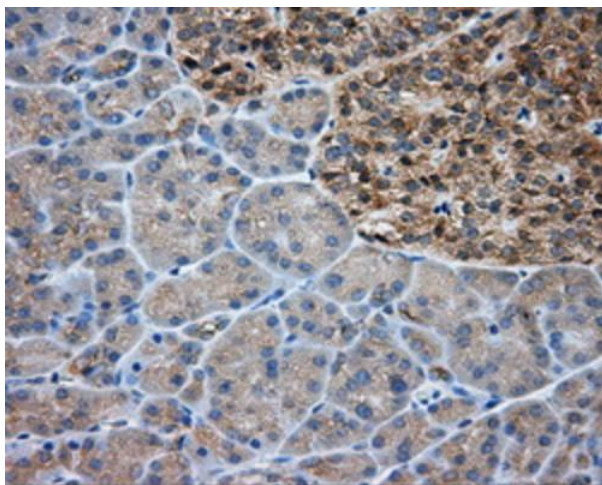
Immunohistochemical staining of paraffin-embedded Kidney tissue within the normal limits using anti-PRKAR2A mouse monoclonal antibody. Heat-induced epitope retrieval by EDTA solution buffer pH 8.0 at 120°C for 3 min.



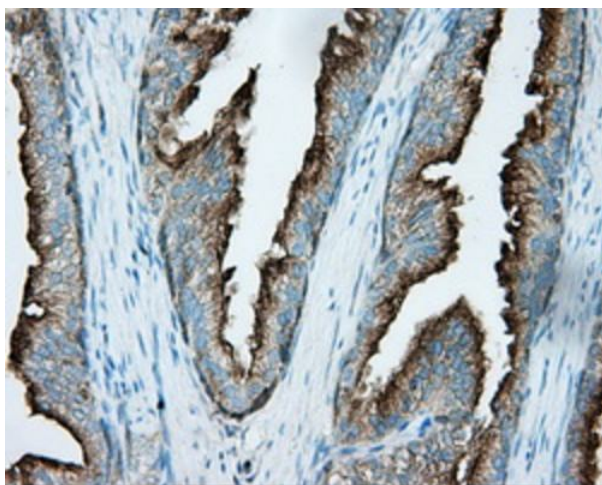
Immunohistochemical staining of paraffin-embedded Carcinoma of liver tissue using anti-PRKAR2A mouse monoclonal antibody. Heat-induced epitope retrieval by EDTA solution buffer pH 8.0 at 120°C for 3 min.



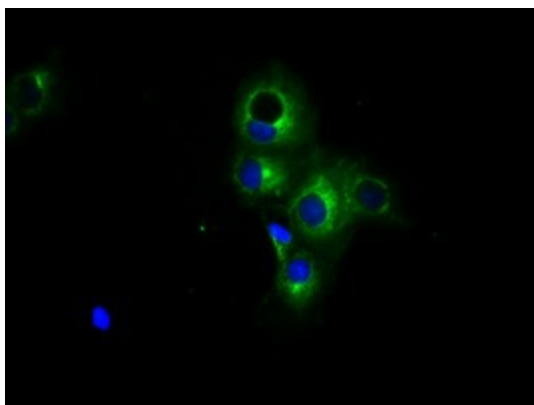
Immunohistochemical staining of paraffin-embedded Adenocarcinoma of ovary tissue using anti-PRKAR2A mouse monoclonal antibody. Heat-induced epitope retrieval by EDTA solution buffer pH 8.0 at 120°C for 3 min.



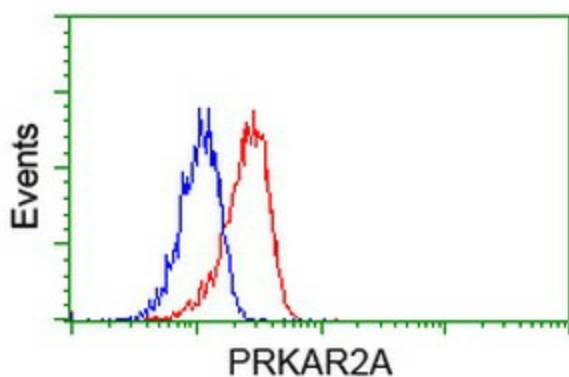
Immunohistochemical staining of paraffin-embedded pancreas tissue within the normal limits using anti-PRKAR2A mouse monoclonal antibody. Heat-induced epitope retrieval by EDTA solution buffer pH 8.0 at 120°C for 3 min.



Immunohistochemical staining of paraffin-embedded prostate tissue within the normal limits using anti-PRKAR2A mouse monoclonal antibody. Heat-induced epitope retrieval by EDTA solution buffer pH 8.0 at 120°C for 3 min.



Anti-PRKAR2A mouse monoclonal antibody ([TA501129]) immunofluorescent staining of COS7 cells transiently transfected by pCMV6-ENTRY PRKAR2A ([RC220376]).



Flow cytometric Analysis of Jurkat cells, using anti-PRKAR2A antibody ([TA501129]), (Red), compared to a nonspecific negative control antibody, (Blue).