

## Product datasheet for **TA501125M**

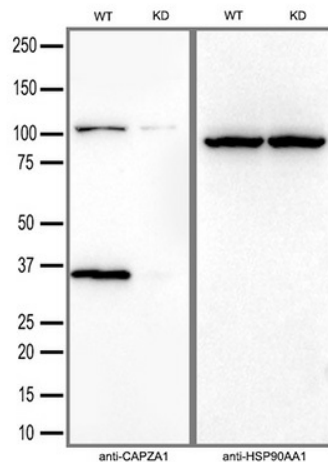
### **CAPZA1 Mouse Monoclonal Antibody [Clone ID: OTI7C8]**

#### **Product data:**

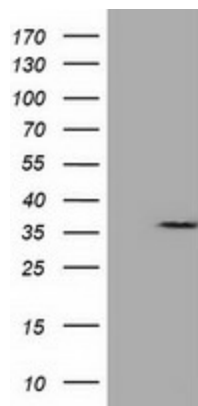
Product Type:	Primary Antibodies
Clone Name:	OTI7C8
Applications:	FC, WB
Recommended Dilution:	WB 1:200~500
Reactivity:	Human, Dog, Rat, Monkey, Mouse
Host:	Mouse
Isotype:	IgG1
Clonality:	Monoclonal
Immunogen:	Full length human recombinant protein of human CAPZA1 (NP_006126) produced in HEK293T cell.
Formulation:	PBS (pH 7.3) containing 1% BSA, 50% glycerol and 0.02% sodium azide.
Concentration:	0.56 mg/ml
Purification:	Purified from mouse ascites fluids or tissue culture supernatant by affinity chromatography (protein A/G)
Conjugation:	Unconjugated
Storage:	Store at -20°C as received.
Stability:	Stable for 12 months from date of receipt.
Predicted Protein Size:	32.7 kDa
Gene Name:	capping actin protein of muscle Z-line subunit alpha 1
Database Link:	<a href="#">NP_006126</a> <a href="#">Entrez Gene 691149 Rat</a> <a href="#">Entrez Gene 475857 Dog</a> <a href="#">Entrez Gene 705653 Monkey</a> <a href="#">Entrez Gene 829 Human</a> <a href="#">P52907</a>
Background:	CAPZA1 is a member of the F-actin capping protein alpha subunit family. This gene encodes the alpha subunit of the barbed-end actin binding protein. The protein regulates growth of the actin filament by capping the barbed end of growing actin filaments. [provided by RefSeq]
Synonyms:	CAPPA1; CAPZ; CAZ1


[View online »](#)

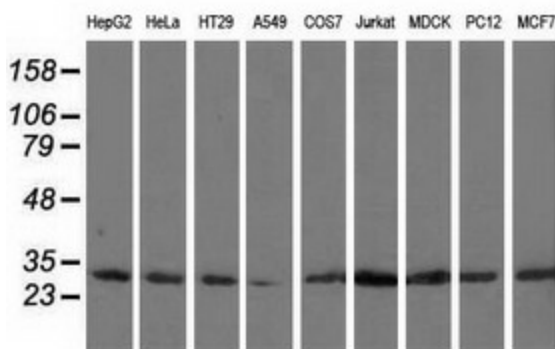
## Product images:



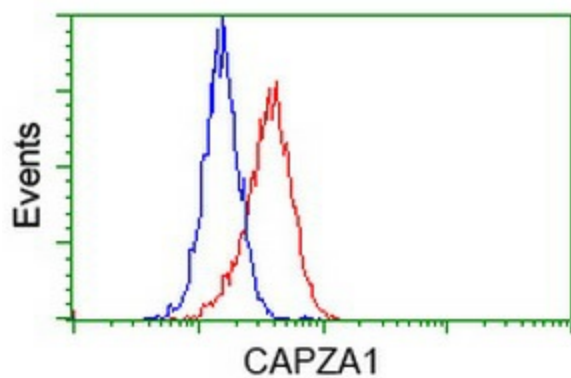
Equivalent amounts of cell lysates (30 ug per lane) of wild-type HeLa cells (WT) and CAPZA1-Knockdown HeLa cells (KD) were separated by SDS-PAGE and immunoblotted with anti-CAPZA1 monoclonal antibody [TA501125] (1:2500). Then the blotted membrane was stripped and reprobed with anti-HSP90AA1 antibody as a loading control.



HEK293T cells were transfected with the pCMV6-ENTRY control (Left lane) or pCMV6-ENTRY CAPZA1 ([RC201642], Right lane) cDNA for 48 hrs and lysed. Equivalent amounts of cell lysates (5 ug per lane) were separated by SDS-PAGE and immunoblotted with anti-CAPZA1. Positive lysates [LY401848] (100ug) and [LC401848] (20ug) can be purchased separately from OriGene.



Western blot analysis of extracts (35ug) from 9 different cell lines by using anti-CAPZA1 monoclonal antibody.



Flow cytometric Analysis of HeLa cells, using anti-CAPZA1 antibody ([TA501125]), (Red), compared to a nonspecific negative control antibody, (Blue) (1:100).