

## Product datasheet for **TA501124BM**

### **CAPZA1 Mouse Monoclonal Antibody (HRP conjugated) [Clone ID: OTI2G4]**

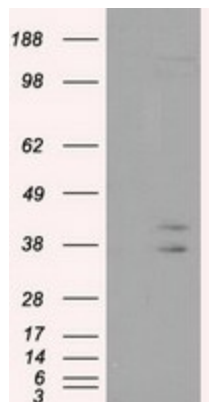
#### **Product data:**

<b>Product Type:</b>	Primary Antibodies
<b>Clone Name:</b>	OTI2G4
<b>Applications:</b>	FC, IHC, WB
<b>Recommended Dilution:</b>	WB 1:500, IHC 1:50, Flow 1:100
<b>Reactivity:</b>	Human, Mouse, Rat
<b>Host:</b>	Mouse
<b>Isotype:</b>	IgG1
<b>Clonality:</b>	Monoclonal
<b>Immunogen:</b>	Full length human recombinant protein of human CAPZA1(NP_006126) produced in HEK293T cell.
<b>Formulation:</b>	PBS (pH 7.3) containing 1% BSA, 50% glycerol.
<b>Concentration:</b>	0.5 mg/ml
<b>Purification:</b>	Purified from mouse ascites fluids or tissue culture supernatant by affinity chromatography (protein A/G)
<b>Conjugation:</b>	HRP
<b>Storage:</b>	Store at -20°C as received.
<b>Stability:</b>	Stable for 12 months from date of receipt.
<b>Predicted Protein Size:</b>	32.7 kDa
<b>Gene Name:</b>	capping actin protein of muscle Z-line subunit alpha 1
<b>Database Link:</b>	<a href="#">NP_006126</a> <a href="#">Entrez Gene 691149 Rat</a> <a href="#">Entrez Gene 829 Human</a> <a href="#">P52907</a>
<b>Background:</b>	CAPZA1 is a member of the F-actin capping protein alpha subunit family. This gene encodes the alpha subunit of the barbed-end actin binding protein. The protein regulates growth of the actin filament by capping the barbed end of growing actin filaments.
<b>Synonyms:</b>	CAPPA1; CAPZ; CAZ1

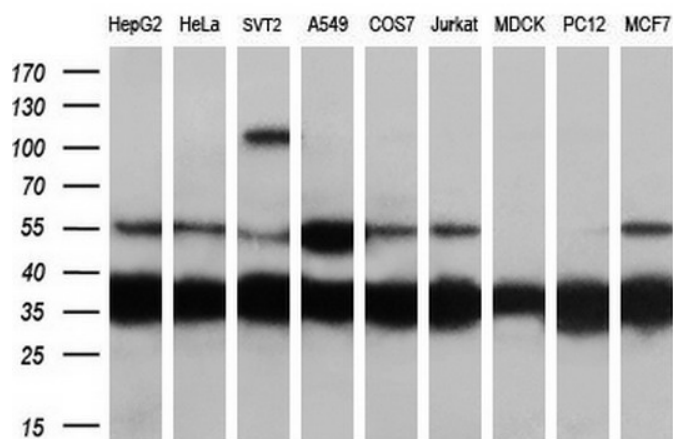


[View online »](#)

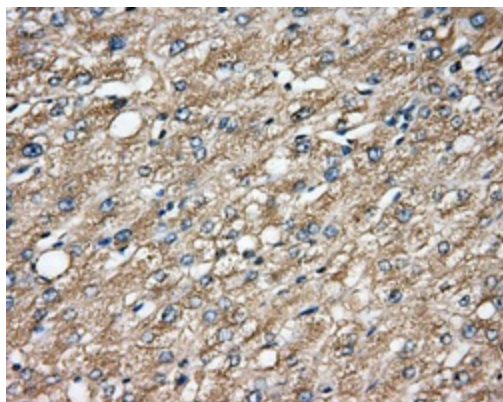
**Product images:**



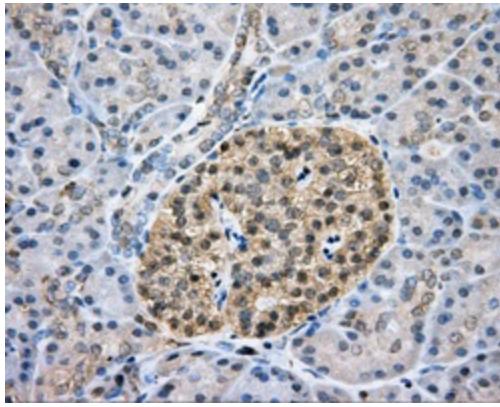
HEK293T cells were transfected with the pCMV6-ENTRY control (Cat# [PS100001], Left lane) or pCMV6-ENTRY CAPZA1 (Cat# [RC201642], Right lane) cDNA for 48 hrs and lysed. Equivalent amounts of cell lysates (5 ug per lane) were separated by SDS-PAGE and immunoblotted with anti-CAPZA1 (Cat# [TA501124]). Positive lysates [LY401848] (100ug) and [LC401848] (20ug) can be purchased separately from OriGene.



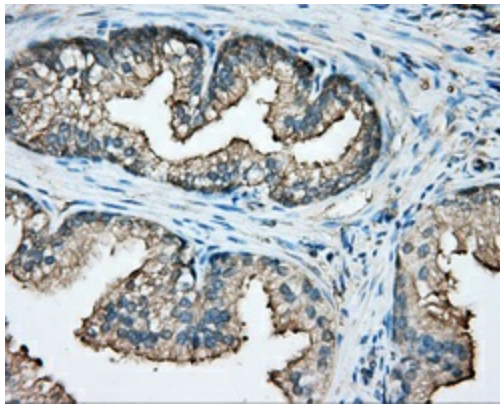
Western blot analysis of extracts (35ug) from 9 different cell lines by using anti-CAPZA1 monoclonal antibody (HepG2: human; HeLa: human; SVT2: mouse; A549: human; COS7: monkey; Jurkat: human; MDCK: canine; PC12: rat; MCF7: human) (1:200).



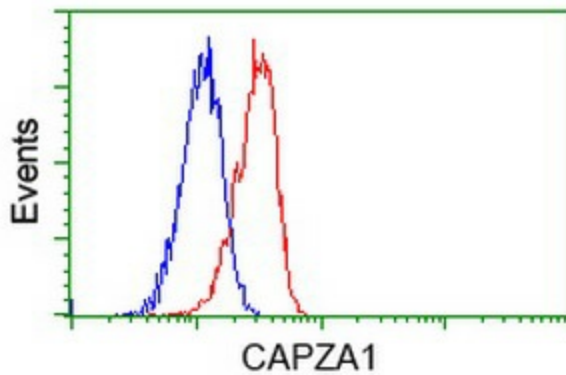
Immunohistochemical staining of paraffin-embedded liver tissue within the normal limits using anti-CAPZA1 mouse monoclonal antibody. (Heat-induced epitope retrieval by 10mM citric buffer, pH6.0, 100°C for 10min, [TA501124], Dilution 1:50)



Immunohistochemical staining of paraffin-embedded pancreas tissue within the normal limits using anti-CAPZA1 mouse monoclonal antibody. (Heat-induced epitope retrieval by 10mM citric buffer, pH6.0, 100°C for 10min, [TA501124], Dilution 1:50)



Immunohistochemical staining of paraffin-embedded prostate tissue within the normal limits using anti-CAPZA1 mouse monoclonal antibody. (Heat-induced epitope retrieval by 10mM citric buffer, pH6.0, 100°C for 10min, [TA501124], Dilution 1:50)



Flow cytometric Analysis of Jurkat cells, using anti-CAPZA1 antibody ([TA501124]), (Red), compared to a nonspecific negative control antibody, (Blue) (1:100).