

Product datasheet for TA501123M

TUBA8 Mouse Monoclonal Antibody [Clone ID: OTI2C2]

Product data:

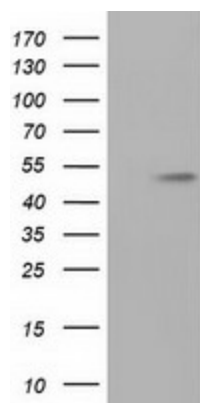
Product Type:	Primary Antibodies
Clone Name:	OTI2C2
Applications:	FC, IF, WB
Recommended Dilution:	WB 1:200~1000, IF 1:100, FLOW 1:100
Reactivity:	Human, Monkey, Mouse, Rat
Host:	Mouse
Isotype:	IgG2a
Clonality:	Monoclonal
Immunogen:	Full length human recombinant protein of human TUBA8 (NP_061816) produced in HEK293T cell.
Formulation:	PBS (pH 7.3) containing 1% BSA, 50% glycerol and 0.02% sodium azide.
Concentration:	0.81 mg/ml
Purification:	Purified from mouse ascites fluids or tissue culture supernatant by affinity chromatography (protein A/G)
Conjugation:	Unconjugated
Storage:	Store at -20°C as received.
Stability:	Stable for 12 months from date of receipt.
Predicted Protein Size:	49.9 kDa
Gene Name:	tubulin alpha 8
Database Link:	NP_061816 Entrez Gene 500377 Rat Entrez Gene 710378 Monkey Entrez Gene 51807 Human Q9NY65
Background:	This gene encodes a member of the alpha tubulin protein family. Alpha tubulins are one of two core protein families (alpha and beta tubulins) that heterodimerize and assemble to form microtubules. Mutations in this gene are associated with polymicrogyria and optic nerve hypoplasia. Alternate splicing results in multiple transcript variants. [provided by RefSeq]
Synonyms:	TUBAL2


[View online »](#)

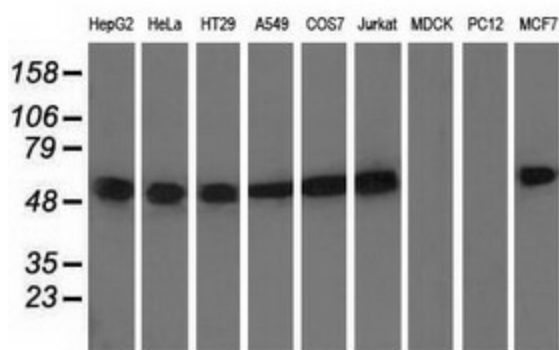
Protein Families: Druggable Genome

Protein Pathways: Gap junction, Pathogenic Escherichia coli infection

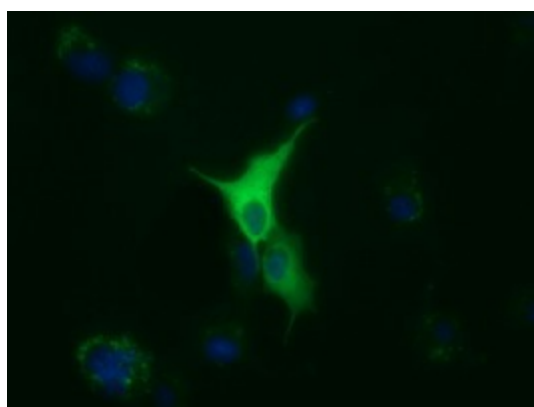
Product images:



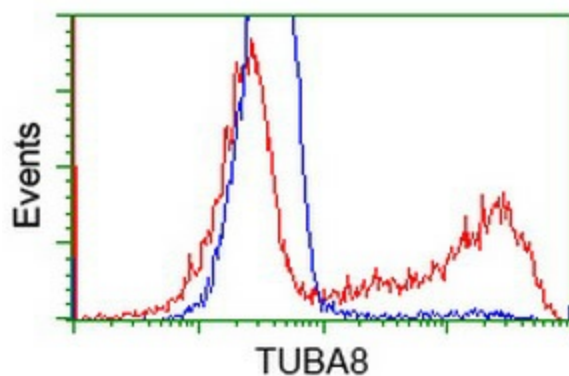
HEK293T cells were transfected with the pCMV6-ENTRY control (Left lane) or pCMV6-ENTRY TUBA8 ([RC211175], Right lane) cDNA for 48 hrs and lysed. Equivalent amounts of cell lysates (5 ug per lane) were separated by SDS-PAGE and immunoblotted with anti-TUBA8. Positive lysates [LY412867] (100ug) and [LC412867] (20ug) can be purchased separately from OriGene.



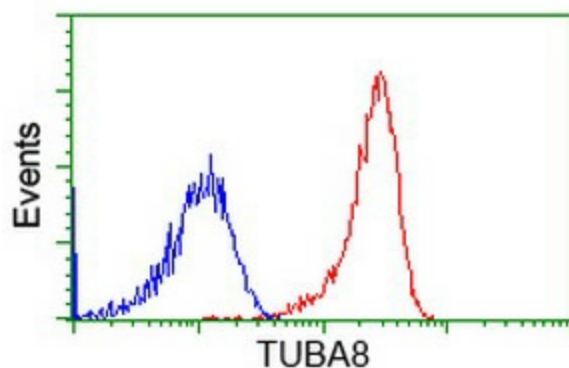
Western blot analysis of extracts (35ug) from 9 different cell lines by using anti-TUBA8 monoclonal antibody.



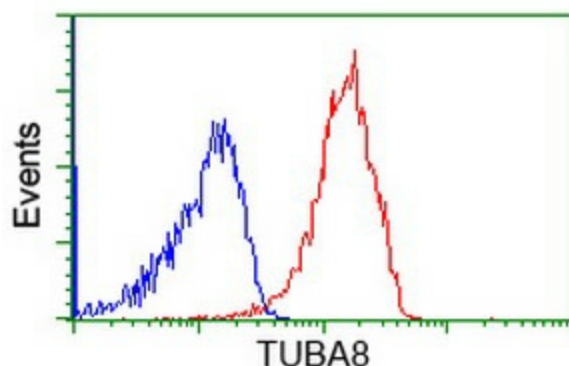
Anti-TUBA8 mouse monoclonal antibody ([TA501123]) immunofluorescent staining of COS7 cells transiently transfected by pCMV6-ENTRY TUBA8 ([RC211175]).



HEK293T cells transfected with either [RC211175] overexpress plasmid (Red) or empty vector control plasmid (Blue) were immunostained by anti-TUBA8 antibody ([TA501123]), and then analyzed by flow cytometry.



Flow cytometric Analysis of HeLa cells, using anti-TUBA8 antibody ([TA501123]), (Red), compared to a nonspecific negative control antibody (TA50011), (Blue).



Flow cytometric Analysis of Jurkat cells, using anti-TUBA8 antibody ([TA501123]), (Red), compared to a nonspecific negative control antibody (TA50011), (Blue).