

Product datasheet for **TA501121M**

NIT2 Mouse Monoclonal Antibody [Clone ID: OTI5A3]

Product data:

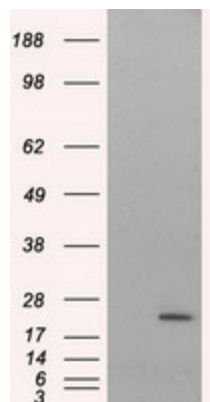
| | |
|-------------------------|---|
| Product Type: | Primary Antibodies |
| Clone Name: | OTI5A3 |
| Applications: | IF, IHC, WB |
| Recommended Dilution: | WB 1:2000, IHC 1:50, IF 1:100 |
| Reactivity: | Human, Mouse, Rat |
| Host: | Mouse |
| Isotype: | IgG2a |
| Clonality: | Monoclonal |
| Immunogen: | Full length human recombinant protein of human NIT2 (NP_064587) produced in HEK293T cell. |
| Formulation: | PBS (pH 7.3) containing 1% BSA, 50% glycerol and 0.02% sodium azide. |
| Concentration: | 0.95 mg/ml |
| Purification: | Purified from mouse ascites fluids or tissue culture supernatant by affinity chromatography (protein A/G) |
| Conjugation: | Unconjugated |
| Storage: | Store at -20°C as received. |
| Stability: | Stable for 12 months from date of receipt. |
| Predicted Protein Size: | 30.4 kDa |
| Gene Name: | nitrilase family member 2 |
| Database Link: | NP_064587 Entrez Gene 52633 Mouse Entrez Gene 288174 Rat Entrez Gene 56954 Human Q9NQR4 |
| Background: | Has a omega-amidase activity. The role of omega-amidase is to remove potentially toxic intermediates by converting alpha-ketoglutaramate and alpha-ketosuccinamate to biologically useful alpha-ketoglutarate and oxaloacetate, respectively. Overexpression decreases the colony-forming capacity of cultured cells by arresting cells in the G2 phase of the cell cycle |



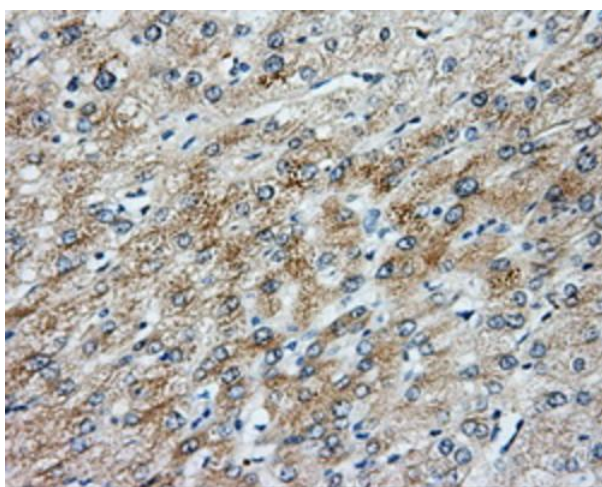
[View online »](#)

Synonyms: HEL-S-8a

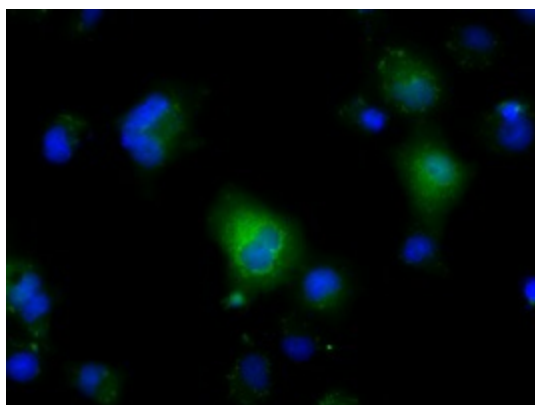
Product images:



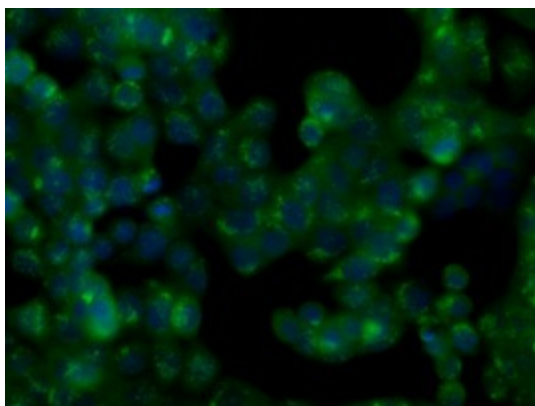
HEK293T cells were transfected with the pCMV6-ENTRY control (Left lane) or pCMV6-ENTRY NIT2 ([RC210660], Right lane) cDNA for 48 hrs and lysed. Equivalent amounts of cell lysates (5 ug per lane) were separated by SDS-PAGE and immunoblotted with anti-NIT2. Positive lysates [LY402761] (100ug) and [LC402761] (20ug) can be purchased separately from OriGene.



Immunohistochemical staining of paraffin-embedded liver tissue within the normal limits using anti-NIT2 mouse monoclonal antibody. Heat-induced epitope retrieval by EDTA solution buffer pH 8.0 at 120°C for 3 min.



Anti-NIT2 mouse monoclonal antibody ([TA501121]) immunofluorescent staining of COS7 cells transiently transfected by pCMV6-ENTRY NIT2 ([RC210660]).



Immunofluorescent staining of HT29 cells using anti-NIT2 mouse monoclonal antibody (TA501121).