

Product datasheet for **TA501120S**

RhoGDI (ARHGDI) Mouse Monoclonal Antibody [Clone ID: OTI1A7]

Product data:

Product Type:	Primary Antibodies
Clone Name:	OTI1A7
Applications:	IF, IHC, WB
Recommended Dilution:	WB 1:2000, IHC 1:50, IF 1:100
Reactivity:	Human, Mouse, Rat
Host:	Mouse
Isotype:	IgG1
Clonality:	Monoclonal
Immunogen:	Full length human recombinant protein of human ARHGDI(NP_004300) produced in HEK293T cell.
Formulation:	PBS (pH 7.3) containing 1% BSA, 50% glycerol and 0.02% sodium azide.
Concentration:	0.72 mg/ml
Purification:	Purified from mouse ascites fluids or tissue culture supernatant by affinity chromatography (protein A/G)
Conjugation:	Unconjugated
Storage:	Store at -20°C as received.
Stability:	Stable for 12 months from date of receipt.
Predicted Protein Size:	23 kDa
Gene Name:	Rho GDP dissociation inhibitor alpha
Database Link:	NP_004300 Entrez Gene 192662 MouseEntrez Gene 360678 RatEntrez Gene 396 Human P52565
Background:	Aplysia Ras-related homologs (ARHs), also called Rho genes, belong to the RAS gene superfamily encoding small guanine nucleotide exchange (GTP/GDP) factors. The ARH proteins may be kept in the inactive, GDP-bound state by interaction with GDP dissociation inhibitors, such as ARHGDI
Synonyms:	GDIA1; HEL-S-47e; NPHS8; RHOGDI; RHOGDI-1

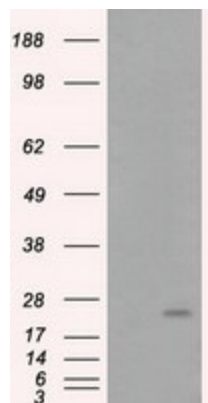


[View online »](#)

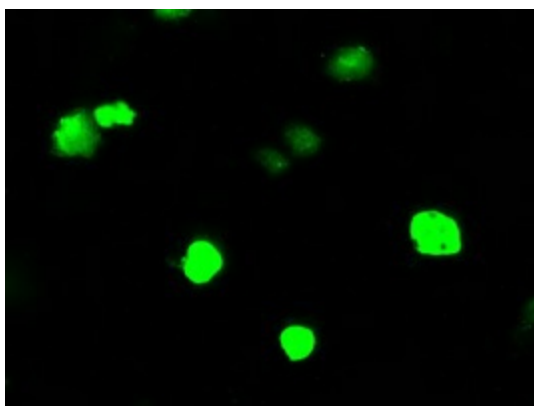
Protein Families: Druggable Genome

Protein Pathways: Neurotrophin signaling pathway

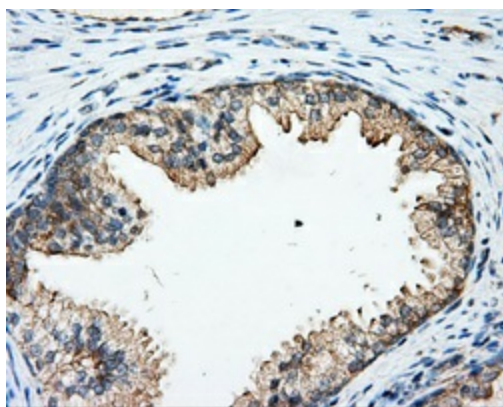
Product images:



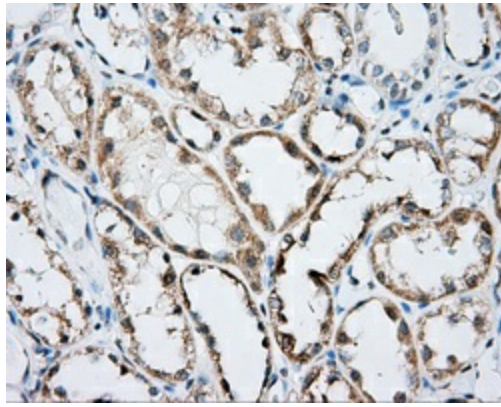
HEK293T cells were transfected with the pCMV6-ENTRY control (Left lane) or pCMV6-ENTRY ARHGDI ([RC200902], Right lane) cDNA for 48 hrs and lysed. Equivalent amounts of cell lysates (5 ug per lane) were separated by SDS-PAGE and immunoblotted with anti-ARHGDI. Positive lysates [LY401371] (100ug) and [LC401371] (20ug) can be purchased separately from OriGene.



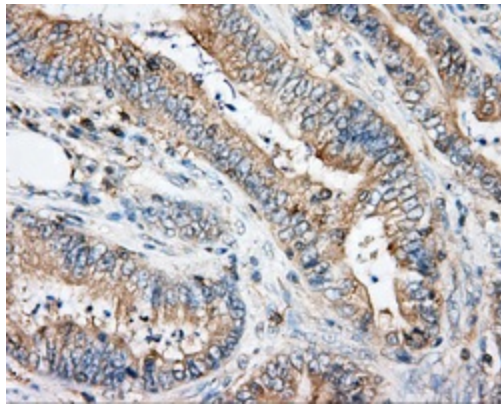
Anti-ARHGDI mouse monoclonal antibody ([TA501120]) immunofluorescent staining of COS7 cells transiently transfected by pCMV6-ENTRY ARHGDI ([RC200902]).



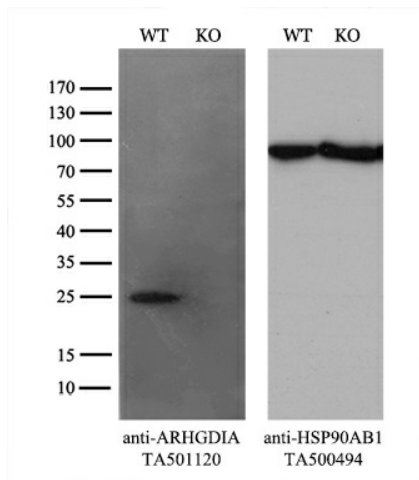
Immunohistochemical staining of paraffin-embedded prostate tissue within the normal limits using anti-ARHGDI mouse monoclonal antibody. (Heat-induced epitope retrieval by 10mM citric buffer, pH6.0, 100°C for 10min, [TA501120], Dilution 1:50)



Immunohistochemical staining of paraffin-embedded Kidney tissue within the normal limits using anti-ARHGDI2 mouse monoclonal antibody. (Heat-induced epitope retrieval by 10mM citric buffer, pH6.0, 100°C for 10min, [TA501120], Dilution 1:50)



Immunohistochemical staining of paraffin-embedded Adenocarcinoma of colon tissue using anti-ARHGDI2 mouse monoclonal antibody. (Heat-induced epitope retrieval by 10mM citric buffer, pH6.0, 100°C for 10min, [TA501120], Dilution 1:50)



Equivalent amounts of cell lysates (10 ug per lane) of wild-type 293T cells (WT, Cat# LC810293T) and ARHGDI2-Knockout 293T cells (KO, Cat# [LC811309]) were separated by SDS-PAGE and immunoblotted with anti-ARHGDI2 monoclonal antibody [TA501120], (1:200). Then the blotted membrane was stripped and reprobed with anti-HSP90AB1 antibody ([TA500494]) as a loading control.