

Product datasheet for **TA501107BM**

KIAA1576 (VAT1L) Mouse Monoclonal Antibody (HRP conjugated) [Clone ID: OTI1H3]

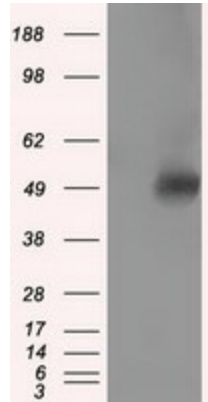
Product data:

| | |
|-------------------------|---|
| Product Type: | Primary Antibodies |
| Clone Name: | OTI1H3 |
| Applications: | FC, IF, IHC, WB |
| Recommended Dilution: | WB 1:2000, IHC 1:50, IF 1:100, Flow 1:100 |
| Reactivity: | Human, Mouse, Rat |
| Host: | Mouse |
| Isotype: | IgG1 |
| Clonality: | Monoclonal |
| Immunogen: | Full length human recombinant protein of human VAT1L (NP_065978) produced in HEK293T cell. |
| Formulation: | PBS (pH 7.3) containing 1% BSA, 50% glycerol. |
| Concentration: | 0.5 mg/ml |
| Purification: | Purified from mouse ascites fluids or tissue culture supernatant by affinity chromatography (protein A/G) |
| Conjugation: | HRP |
| Storage: | Store at -20°C as received. |
| Stability: | Stable for 12 months from date of receipt. |
| Predicted Protein Size: | 45.7 kDa |
| Gene Name: | vesicle amine transport 1 like |
| Database Link: | NP_065978 Entrez Gene 270097 MouseEntrez Gene 57687 Human Q9HCJ6 |
| Synonyms: | KIAA1576 |
| Protein Families: | Druggable Genome |

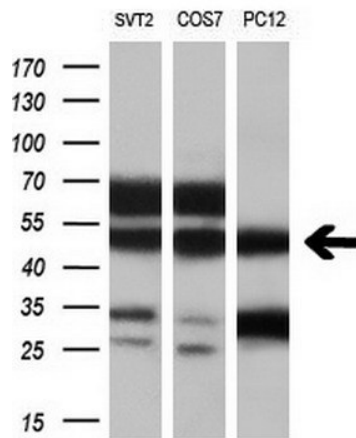


[View online »](#)

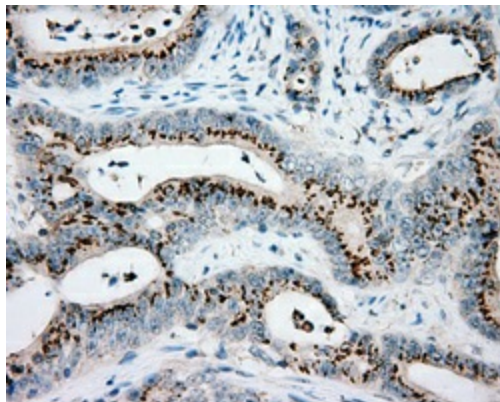
Product images:



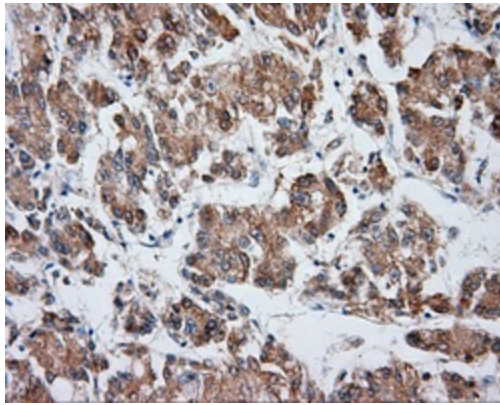
HEK293T cells were transfected with the pCMV6-ENTRY control (Cat# [PS100001], Left lane) or pCMV6-ENTRY VAT1L (Cat# [RC207266], Right lane) cDNA for 48 hrs and lysed. Equivalent amounts of cell lysates (5 ug per lane) were separated by SDS-PAGE and immunoblotted with anti-VAT1L(Cat# [TA501107]). Positive lysates [LY412225] (100ug) and [LC412225] (20ug) can be purchased separately from OriGene.



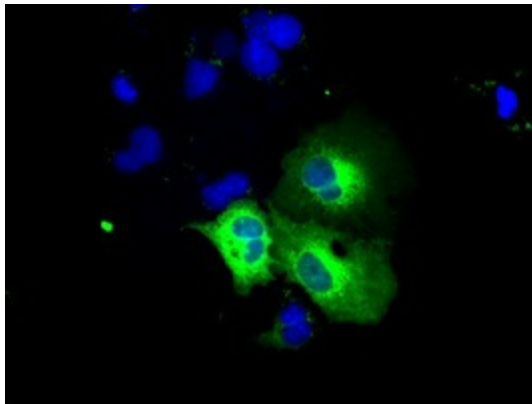
Western blot analysis of extracts (10ug) from 3 different cell lines by using anti-VAT1L monoclonal antibody (1:200).



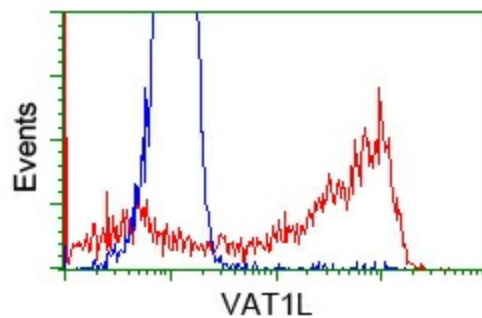
Immunohistochemical staining of paraffin-embedded Adenocarcinoma of colon tissue using anti-VAT1L mouse monoclonal antibody. (Heat-induced epitope retrieval by 10mM citric buffer, pH6.0, 100°C for 10min, [TA501107], Dilution 1:50)



Immunohistochemical staining of paraffin-embedded Carcinoma of liver tissue using anti-VAT1L mouse monoclonal antibody. (Heat-induced epitope retrieval by 10mM citric buffer, pH6.0, 100°C for 10min, [TA501107], Dilution 1:50)



Anti-VAT1L mouse monoclonal antibody ([TA501107]) immunofluorescent staining of COS7 cells transiently transfected by pCMV6-ENTRY VAT1L ([RC207266]).



HEK293T cells transfected with either pCMV6-ENTRY VAT1L ([RC207266]) (Red) or empty vector control plasmid (Blue) were immunostained with anti-VAT1L mouse monoclonal ([TA501107]), and then analyzed by flow cytometry.