

Product datasheet for **TA501098**

NIT2 Mouse Monoclonal Antibody [Clone ID: OTI3F3]

Product data:

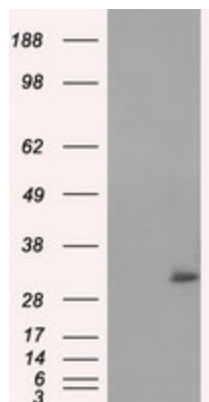
Product Type:	Primary Antibodies
Clone Name:	OTI3F3
Applications:	IF, IHC, WB
Recommended Dilution:	WB 1:2000, IHC 1:50, IF 1:100
Reactivity:	Human, Mouse, Rat
Host:	Mouse
Isotype:	IgG2b
Clonality:	Monoclonal
Immunogen:	Full length human recombinant protein of human NIT2 (NP_064587) produced in HEK293T cell.
Formulation:	PBS (pH 7.3) containing 1% BSA, 50% glycerol and 0.02% sodium azide.
Concentration:	0.72 mg/ml
Purification:	Purified from mouse ascites fluids or tissue culture supernatant by affinity chromatography (protein A/G)
Conjugation:	Unconjugated
Storage:	Store at -20°C as received.
Stability:	Stable for 12 months from date of receipt.
Predicted Protein Size:	30.4 kDa
Gene Name:	nitrilase family member 2
Database Link:	NP_064587 Entrez Gene 52633 Mouse Entrez Gene 288174 Rat Entrez Gene 56954 Human Q9NQR4
Background:	Has a omega-amidase activity. The role of omega-amidase is to remove potentially toxic intermediates by converting alpha-ketoglutaramate and alpha-ketosuccinamate to biologically useful alpha-ketoglutarate and oxaloacetate, respectively. Overexpression decreases the colony-forming capacity of cultured cells by arresting cells in the G2 phase of the cell cycle



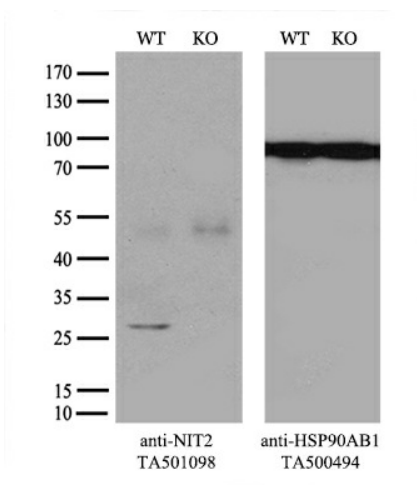
[View online »](#)

Synonyms: HEL-S-8a

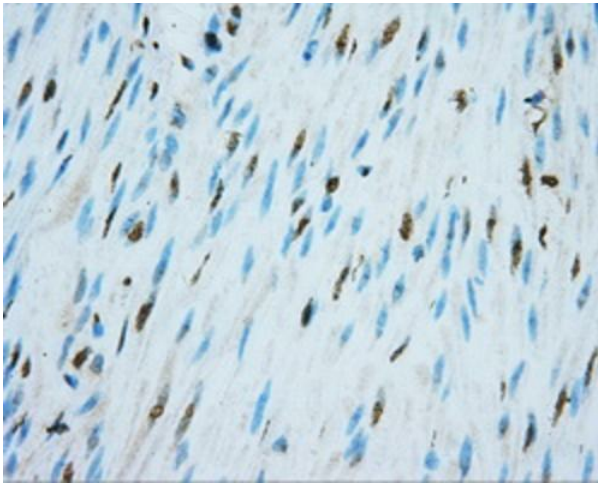
Product images:



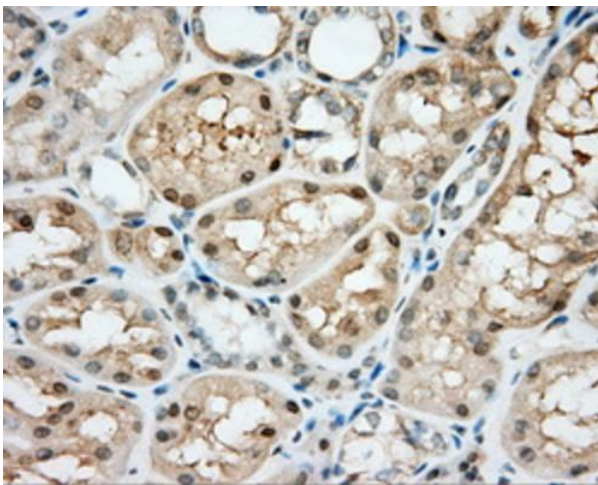
HEK293T cells were transfected with the pCMV6-ENTRY control (Left lane) or pCMV6-ENTRY NIT2 [RC210660], Right lane) cDNA for 48 hrs and lysed. Equivalent amounts of cell lysates (5 ug per lane) were separated by SDS-PAGE and immunoblotted with anti-NIT2. Positive lysates [LY402761] (100ug) and [LC402761] (20ug) can be purchased separately from OriGene.



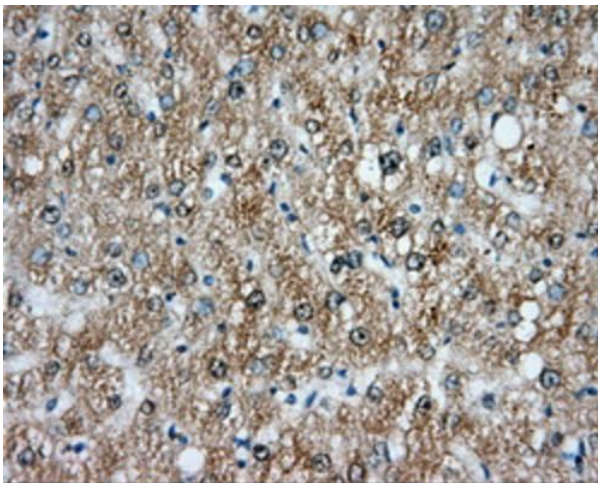
Equivalent amounts of cell lysates (10 ug per lane) of wild-type 293T cells (WT, Cat# LC810293T) and NIT2-Knockout 293T cells (KO, Cat# [LC812235]) were separated by SDS-PAGE and immunoblotted with anti-NIT2 monoclonal antibody TA501098, (1:500). Then the blotted membrane was stripped and reprobed with anti-HSP90AB1 antibody ([TA500494]) as a loading control.



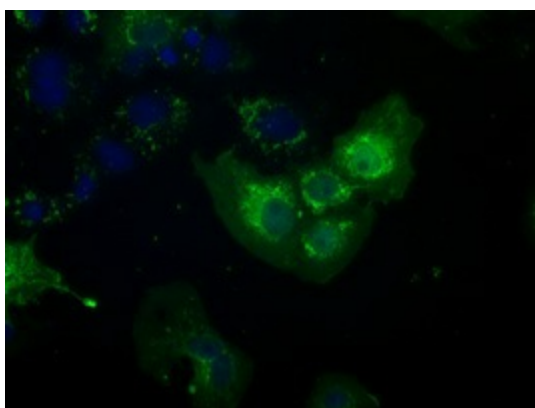
Immunohistochemical staining of paraffin-embedded colon tissue within the normal limits using anti-NIT2 mouse monoclonal antibody. Heat-induced epitope retrieval by EDTA solution buffer pH 8.0 at 120°C for 3 min.



Immunohistochemical staining of paraffin-embedded Kidney tissue within the normal limits using anti-NIT2 mouse monoclonal antibody. Heat-induced epitope retrieval by EDTA solution buffer pH 8.0 at 120°C for 3 min.



Immunohistochemical staining of paraffin-embedded liver tissue within the normal limits using anti-NIT2 mouse monoclonal antibody. Heat-induced epitope retrieval by EDTA solution buffer pH 8.0 at 120°C for 3 min.



Anti-NIT2 mouse monoclonal antibody (TA501098) immunofluorescent staining of COS7 cells transiently transfected by pCMV6-ENTRY NIT2 ([RC210660]).