

Product datasheet for **TA501093BM**

BTK Mouse Monoclonal Antibody (HRP conjugated) [Clone ID: OTI6H9]

Product data:

Product Type:	Primary Antibodies
Clone Name:	OTI6H9
Applications:	FC, IF, IHC, WB
Recommended Dilution:	WB 1:2000, IHC 1:50, IF 1:100, Flow 1:100
Reactivity:	Human, Mouse, Rat
Host:	Mouse
Isotype:	IgG2b
Clonality:	Monoclonal
Immunogen:	Full length human recombinant protein of human BTK (NP_000052) produced in HEK293T cell.
Formulation:	PBS (pH 7.3) containing 1% BSA, 50% glycerol.
Concentration:	0.5 mg/ml
Purification:	Purified from mouse ascites fluids or tissue culture supernatant by affinity chromatography (protein A/G)
Conjugation:	HRP
Storage:	Store at -20°C as received.
Stability:	Stable for 12 months from date of receipt.
Predicted Protein Size:	76.3 kDa
Gene Name:	Bruton tyrosine kinase
Database Link:	NP_000052 Entrez Gene 12229 Mouse Entrez Gene 367901 Rat Entrez Gene 695 Human Q06187
Background:	The protein encoded by this gene plays a crucial role in B-cell development. Mutations in this gene cause X-linked agammaglobulinemia type 1, which is an immunodeficiency characterized by the failure to produce mature B lymphocytes, and associated with a failure of Ig heavy chain rearrangement.
Synonyms:	AGMX1; AT; ATK; BPK; IMD1; PSCTK1; XLA

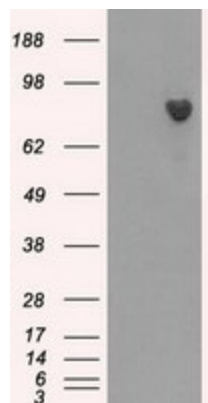


[View online »](#)

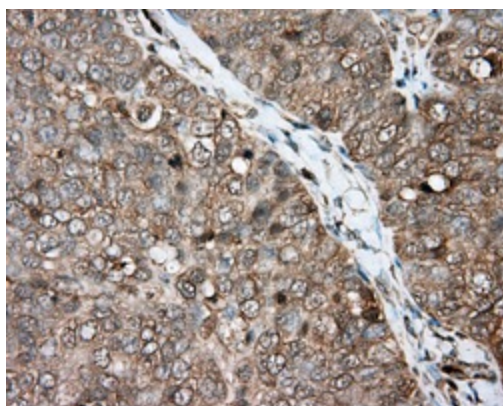
Protein Families: Druggable Genome, Protein Kinase

Protein Pathways: B cell receptor signaling pathway, Fc epsilon RI signaling pathway, Primary immunodeficiency

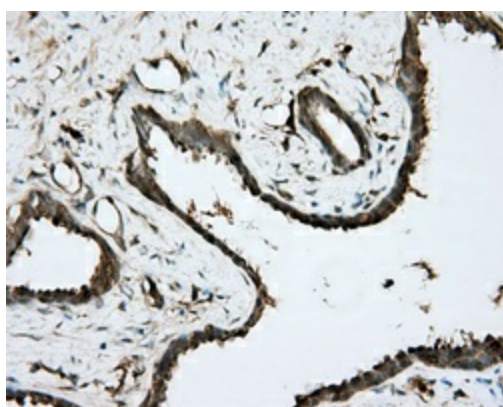
Product images:



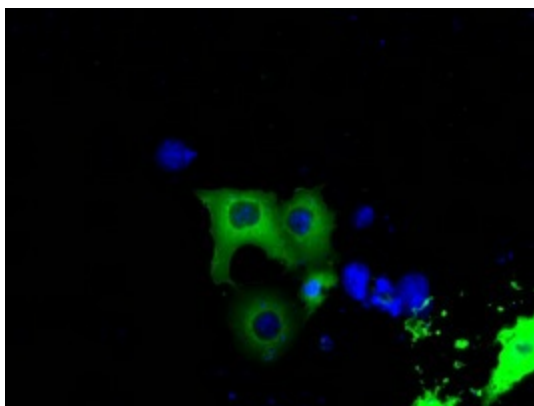
HEK293T cells were transfected with the pCMV6-ENTRY control (Left lane) or pCMV6-ENTRY BTK ([RC211582], Right lane) cDNA for 48 hrs and lysed. Equivalent amounts of cell lysates (5 ug per lane) were separated by SDS-PAGE and immunoblotted with anti-BTK. Positive lysates [LY424947] (100ug) and [LC424947] (20ug) can be purchased separately from OriGene.



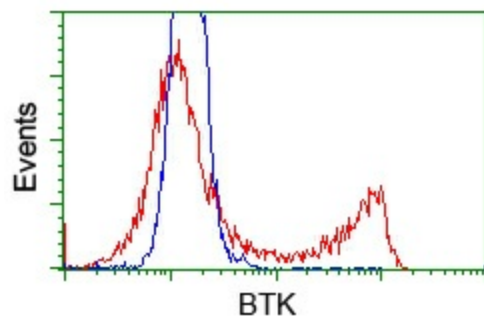
Immunohistochemical staining of paraffin-embedded Adenocarcinoma of ovary tissue using anti-BTK mouse monoclonal antibody. ([TA501092], Dilution 1:50; heat-induced epitope retrieval by 10mM citric buffer, pH6.0, 100°C for 10min)



Immunohistochemical staining of paraffin-embedded Carcinoma of prostate tissue using anti-BTK mouse monoclonal antibody. (Heat-induced epitope retrieval by 10mM citric buffer, pH6.0, 100°C for 10min, [TA501093], Dilution 1:50)



Anti-BTK mouse monoclonal antibody (TA501093) immunofluorescent staining of COS7 cells transiently transfected by pCMV6-ENTRY BTK (RC211582).



HEK293T cells transfected with either pCMV6-ENTRY BTK (RC211582) (Red) or empty vector control plasmid (Blue) were immunostained with anti-BTK mouse monoclonal (TA501093), and then analyzed by flow cytometry.