

Product datasheet for **TA501092**

BTK Mouse Monoclonal Antibody [Clone ID: OTI3D11]

Product data:

| | |
|--------------------------------|---|
| Product Type: | Primary Antibodies |
| Clone Name: | OTI3D11 |
| Applications: | FC, IF, IHC, WB |
| Recommended Dilution: | WB 1:2000, IHC 1:50, IF 1:100, Flow 1:100 |
| Reactivity: | Human, Mouse, Rat |
| Host: | Mouse |
| Isotype: | IgG3 |
| Clonality: | Monoclonal |
| Immunogen: | Full length human recombinant protein of human BTK (NP_000052) produced in HEK293T cell. |
| Formulation: | PBS (pH 7.3) containing 1% BSA, 50% glycerol and 0.02% sodium azide. |
| Concentration: | 0.5 mg/ml |
| Purification: | Purified from mouse ascites fluids or tissue culture supernatant by affinity chromatography (protein A/G) |
| Conjugation: | Unconjugated |
| Storage: | Store at -20°C as received. |
| Stability: | Stable for 12 months from date of receipt. |
| Predicted Protein Size: | 76.3 kDa |
| Gene Name: | Bruton tyrosine kinase |
| Database Link: | NP_000052 Entrez Gene 12229 Mouse Entrez Gene 367901 Rat Entrez Gene 695 Human Q06187 |
| Background: | The protein encoded by this gene plays a crucial role in B-cell development. Mutations in this gene cause X-linked agammaglobulinemia type 1, which is an immunodeficiency characterized by the failure to produce mature B lymphocytes, and associated with a failure of Ig heavy chain rearrangement. |
| Synonyms: | AGMX1; AT; ATK; BPK; IMD1; PSCTK1; XLA |

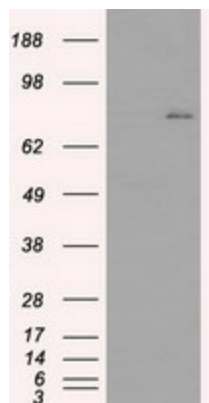


[View online »](#)

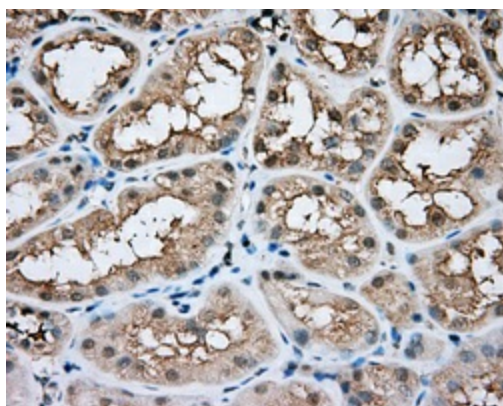
Protein Families: Druggable Genome, Protein Kinase

Protein Pathways: B cell receptor signaling pathway, Fc epsilon RI signaling pathway, Primary immunodeficiency

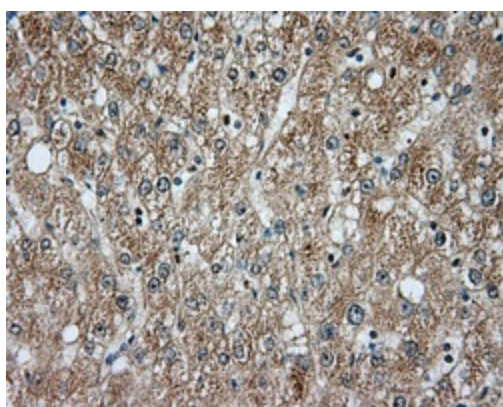
Product images:



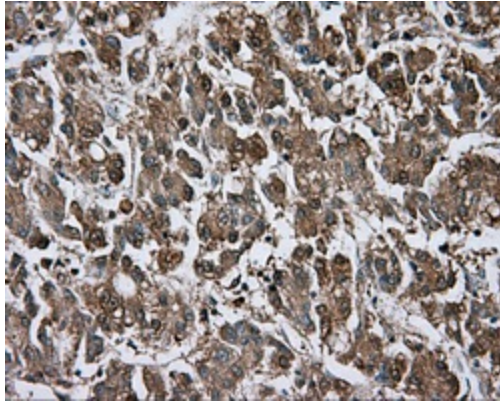
HEK293T cells were transfected with the pCMV6-ENTRY control (Left lane) or pCMV6-ENTRY BTK ([RC211582], Right lane) cDNA for 48 hrs and lysed. Equivalent amounts of cell lysates (5 ug per lane) were separated by SDS-PAGE and immunoblotted with anti-BTK. Positive lysates [LY424947] (100ug) and [LC424947] (20ug) can be purchased separately from OriGene.



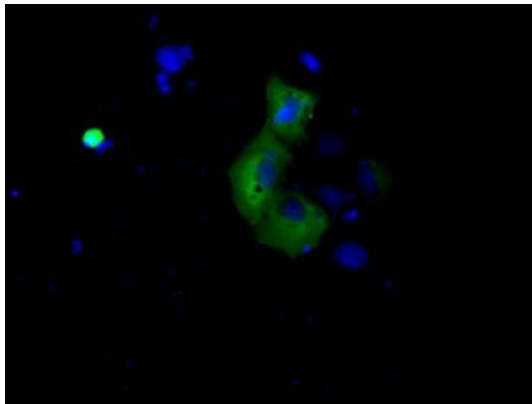
Immunohistochemical staining of paraffin-embedded Kidney tissue within the normal limits using anti-BTK mouse monoclonal antibody. (Heat-induced epitope retrieval by 10mM citric buffer, pH6.0, 100°C for 10min, TA501092, Dilution 1:50)



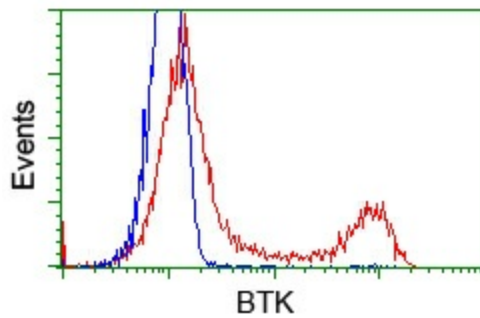
Immunohistochemical staining of paraffin-embedded liver tissue within the normal limits using anti-BTK mouse monoclonal antibody. (Heat-induced epitope retrieval by 10mM citric buffer, pH6.0, 100°C for 10min, TA501092, Dilution 1:50)



Immunohistochemical staining of paraffin-embedded Carcinoma of liver tissue using anti-BTK mouse monoclonal antibody. (Heat-induced epitope retrieval by 10mM citric buffer, pH6.0, 100°C for 10min, TA501092, Dilution 1:50)



Anti-BTK mouse monoclonal antibody (TA501092) immunofluorescent staining of COS7 cells transiently transfected by pCMV6-ENTRY BTK ([RC211582]).



HEK293T cells transfected with either pCMV6-ENTRY BTK ([RC211582]) (Red) or empty vector control plasmid (Blue) were immunostained with anti-BTK mouse monoclonal (TA501092), and then analyzed by flow cytometry.