

## Product datasheet for **TA501091**

### **BTK Mouse Monoclonal Antibody [Clone ID: OTI12H4]**

#### **Product data:**

<b>Product Type:</b>	Primary Antibodies
<b>Clone Name:</b>	OTI12H4
<b>Applications:</b>	FC, IF, IHC, WB
<b>Recommended Dilution:</b>	WB 1:500, IHC 1:50, IF 1:100, Flow 1:100
<b>Reactivity:</b>	Human, Mouse, Rat
<b>Host:</b>	Mouse
<b>Isotype:</b>	IgG3
<b>Clonality:</b>	Monoclonal
<b>Immunogen:</b>	Full length human recombinant protein of human BTK (NP_000052) produced in HEK293T cell.
<b>Formulation:</b>	PBS (pH 7.3) containing 1% BSA, 50% glycerol and 0.02% sodium azide.
<b>Concentration:</b>	0.92 mg/ml
<b>Purification:</b>	Purified from mouse ascites fluids or tissue culture supernatant by affinity chromatography (protein A/G)
<b>Conjugation:</b>	Unconjugated
<b>Storage:</b>	Store at -20°C as received.
<b>Stability:</b>	Stable for 12 months from date of receipt.
<b>Predicted Protein Size:</b>	76.1 kDa
<b>Gene Name:</b>	Bruton tyrosine kinase
<b>Database Link:</b>	<a href="#">NP_000052</a> <a href="#">Entrez Gene 12229 Mouse</a> <a href="#">Entrez Gene 367901 Rat</a> <a href="#">Entrez Gene 695 Human</a> <a href="#">Q06187</a>
<b>Background:</b>	The protein encoded by this gene plays a crucial role in B-cell development. Mutations in this gene cause X-linked agammaglobulinemia type 1, which is an immunodeficiency characterized by the failure to produce mature B lymphocytes, and associated with a failure of Ig heavy chain rearrangement.
<b>Synonyms:</b>	AGMX1; AT; ATK; BPK; IMD1; PSCTK1; XLA

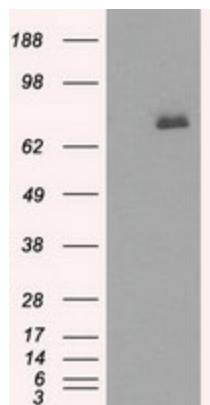


[View online »](#)

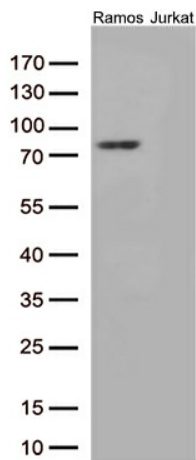
**Protein Families:** Druggable Genome, Protein Kinase

**Protein Pathways:** B cell receptor signaling pathway, Fc epsilon RI signaling pathway, Primary immunodeficiency

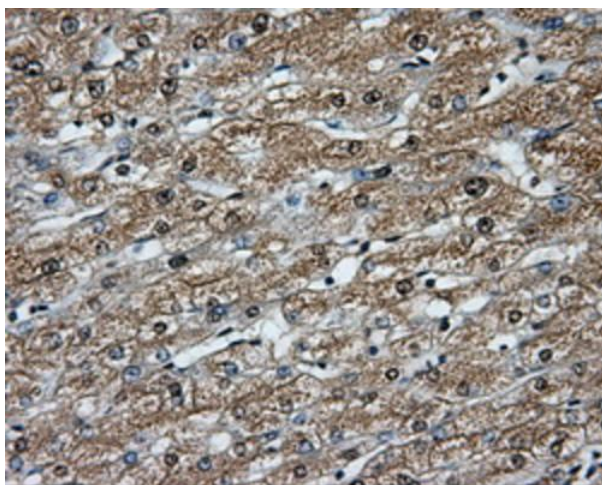
**Product images:**



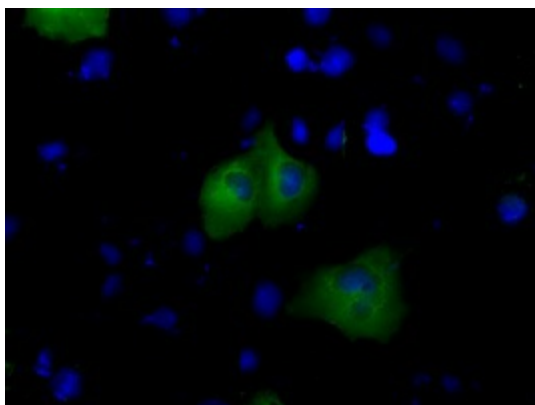
HEK293T cells were transfected with the pCMV6-ENTRY control (Left lane) or pCMV6-ENTRY BTK ([RC211582], Right lane) cDNA for 48 hrs and lysed. Equivalent amounts of cell lysates (5 ug per lane) were separated by SDS-PAGE and immunoblotted with anti-BTK. Positive lysates [LY424947] (100ug) and [LC424947] (20ug) can be purchased separately from OriGene.



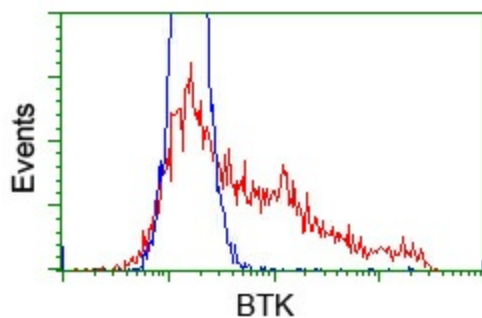
Western blot analysis of extracts (35ug) from 2 different cell lines by using anti-BTK monoclonal antibody (1:500).



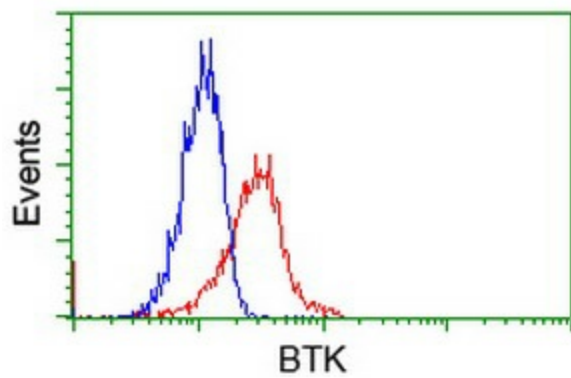
Immunohistochemical staining of paraffin-embedded liver tissue within the normal limits using anti-BTK mouse monoclonal antibody. Heat-induced epitope retrieval by EDTA solution buffer pH 8.0 at 120°C for 3 min.



Anti-BTK mouse monoclonal antibody (TA501091) immunofluorescent staining of COS7 cells transiently transfected by pCMV6-ENTRY BTK ([RC211582]).



HEK293T cells transfected with either pCMV6-ENTRY BTK ([RC211582]) (Red) or empty vector control plasmid (Blue) were immunostained with anti-BTK mouse monoclonal (TA501091), and then analyzed by flow cytometry.



Flow cytometric Analysis of Jurkat cells, using anti-BTK antibody (TA501091), (Red), compared to a nonspecific negative control antibody, (Blue).