

## Product datasheet for **TA501089AM**

### RhoGDI (ARHGDI) Mouse Monoclonal Antibody (Biotin conjugated) [Clone ID: OT11F2]

#### Product data:

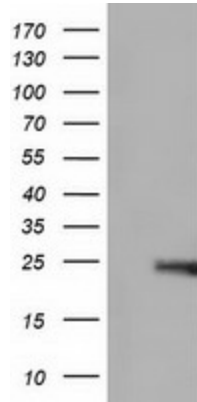
Product Type:	Primary Antibodies
Clone Name:	OT11F2
Applications:	FC, WB
Recommended Dilution:	WB 1:200~1000, FLOW 1:100
Reactivity:	Human, Dog, Rat, Monkey, Mouse
Host:	Mouse
Isotype:	IgG1
Clonality:	Monoclonal
Immunogen:	Full length human recombinant protein of human ARHGDI (NP_004300) produced in HEK293T cell.
Formulation:	PBS (pH 7.3) containing 1% BSA, 50% glycerol and 0.02% sodium azide.
Concentration:	0.5 mg/ml
Purification:	Purified from mouse ascites fluids or tissue culture supernatant by affinity chromatography (protein A/G)
Conjugation:	Biotin
Storage:	Store at -20°C as received.
Stability:	Stable for 12 months from date of receipt.
Predicted Protein Size:	23.0 kDa
Gene Name:	Rho GDP dissociation inhibitor alpha
Database Link:	<a href="#">NP_004300</a> <a href="#">Entrez Gene 192662 Mouse</a> <a href="#">Entrez Gene 360678 Rat</a> <a href="#">Entrez Gene 475924 Dog</a> <a href="#">Entrez Gene 714752 Monkey</a> <a href="#">Entrez Gene 396 Human</a> <a href="#">P52565</a>
Background:	Aplysia Ras-related homologs (ARHs), also called Rho genes, belong to the RAS gene superfamily encoding small guanine nucleotide exchange (GTP/GDP) factors. The ARH proteins may be kept in the inactive, GDP-bound state by interaction with GDP dissociation inhibitors, such as ARHGDI (Leffers et al., 1993 [PubMed 8262133]). [supplied by OMIM]



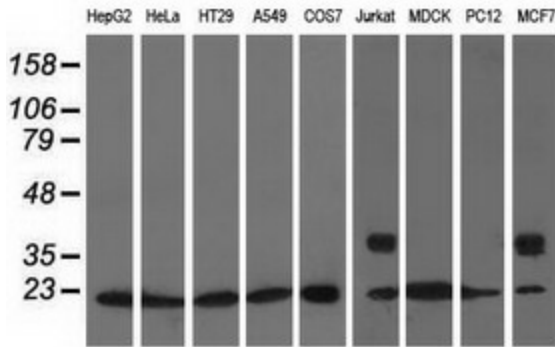
[View online »](#)

**Synonyms:** GDIA1; HEL-S-47e; NPHS8; RHOGDI; RHOGDI-1  
**Protein Families:** Druggable Genome  
**Protein Pathways:** Neurotrophin signaling pathway

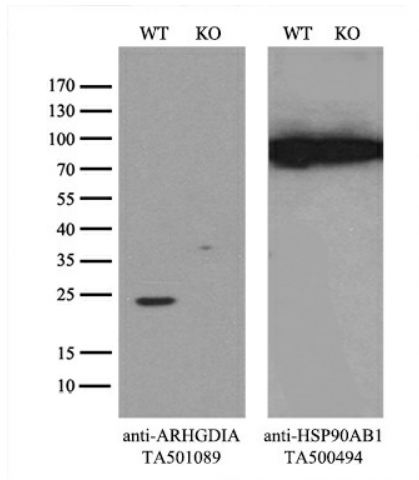
**Product images:**



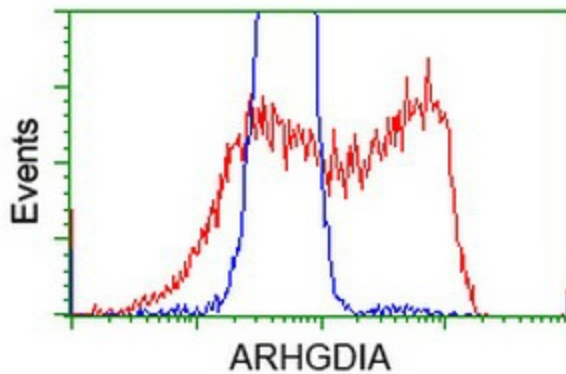
HEK293T cells were transfected with the pCMV6-ENTRY control (Cat# [PS100001], Left lane) or pCMV6-ENTRY ARHGDI (Cat# [RC200902], Right lane) cDNA for 48 hrs and lysed. Equivalent amounts of cell lysates (5 ug per lane) were separated by SDS-PAGE and immunoblotted with anti-ARHGDI (Cat# [TA501089]). Positive lysates [LY401371] (100ug) and [LC401371] (20ug) can be purchased separately from OriGene.



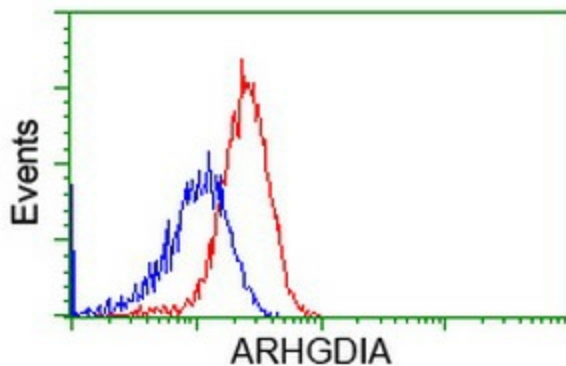
Western blot analysis of extracts (35ug) from 9 different cell lines by using anti-ARHGDI monoclonal antibody.



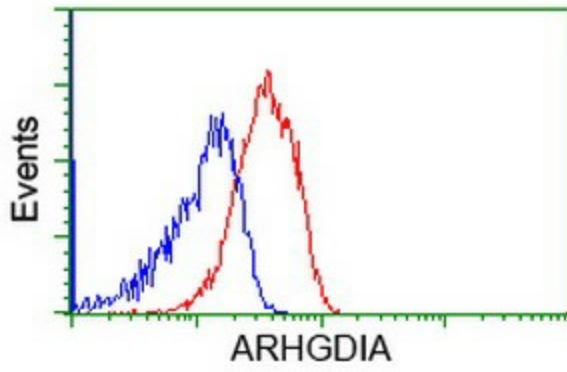
Equivalent amounts of cell lysates (10 ug per lane) of wild-type 293T cells (WT, Cat# LC810293T) and ARHGDI-Knockout 293T cells (KO, Cat# [LC811309]) were separated by SDS-PAGE and immunoblotted with anti-ARHGDI monoclonal antibody [TA501089], (1:500). Then the blotted membrane was stripped and reprobed with anti-HSP90AB1 antibody ([TA500494]) as a loading control.



HEK293T cells transfected with either [RC200902] overexpress plasmid (Red) or empty vector control plasmid (Blue) were immunostained by anti-ARHGDI antibody ([TA501089]), and then analyzed by flow cytometry.



Flow cytometric Analysis of HeLa cells, using anti-ARHGDI antibody ([TA501089]), (Red), compared to a nonspecific negative control antibody (TA50011), (Blue).



Flow cytometric Analysis of Jurkat cells, using anti-ARHGDI antibody ([TA501089]), (Red), compared to a nonspecific negative control antibody (TA50011), (Blue).