

## Product datasheet for **TA501081BM**

### **NIT2 Mouse Monoclonal Antibody (HRP conjugated) [Clone ID: OTI6H7]**

#### **Product data:**

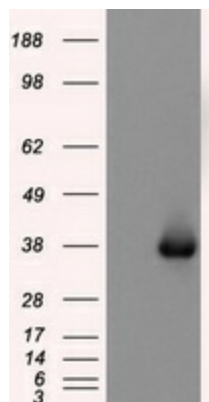
Product Type:	Primary Antibodies
Clone Name:	OTI6H7
Applications:	IF, IHC, WB
Recommended Dilution:	WB 1:2000, IHC 1:50, IF 1:100
Reactivity:	Human, Mouse, Rat
Host:	Mouse
Isotype:	IgG2b
Clonality:	Monoclonal
Immunogen:	Full length human recombinant protein of human NIT2 (NP_064587) produced in HEK293T cell.
Formulation:	PBS (pH 7.3) containing 1% BSA, 50% glycerol.
Concentration:	0.5 mg/ml
Purification:	Purified from mouse ascites fluids or tissue culture supernatant by affinity chromatography (protein A/G)
Conjugation:	HRP
Storage:	Store at -20°C as received.
Stability:	Stable for 12 months from date of receipt.
Predicted Protein Size:	30.4 kDa
Gene Name:	nitrilase family member 2
Database Link:	<a href="#">NP_064587</a> <a href="#">Entrez Gene 52633 Mouse</a> <a href="#">Entrez Gene 288174 Rat</a> <a href="#">Entrez Gene 56954 Human</a> <a href="#">Q9NQR4</a>
Background:	Has a omega-amidase activity. The role of omega-amidase is to remove potentially toxic intermediates by converting alpha-ketoglutaramate and alpha-ketosuccinamate to biologically useful alpha-ketoglutarate and oxaloacetate, respectively. Overexpression decreases the colony-forming capacity of cultured cells by arresting cells in the G2 phase of the cell cycle



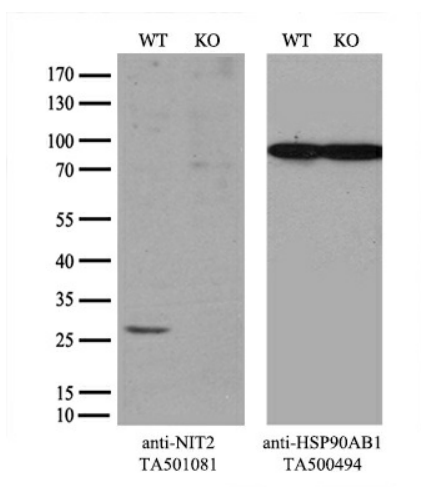
[View online »](#)

Synonyms: HEL-S-8a

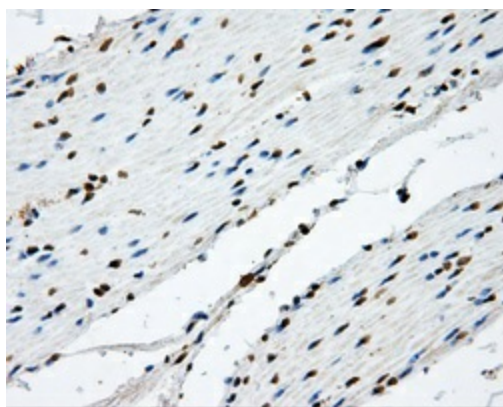
**Product images:**



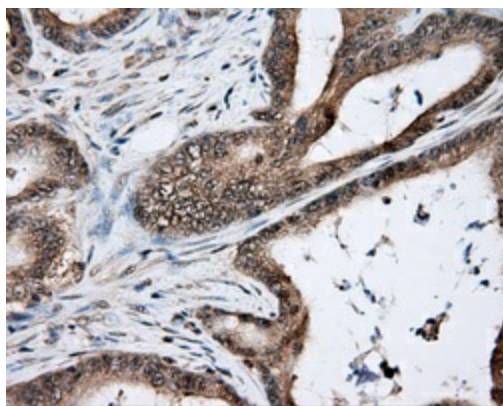
HEK293T cells were transfected with the pCMV6-ENTRY control (Left lane) or pCMV6-ENTRY NIT2 [RC210660], Right lane) cDNA for 48 hrs and lysed. Equivalent amounts of cell lysates (5 ug per lane) were separated by SDS-PAGE and immunoblotted with anti-NIT2. Positive lysates [LY402761] (100ug) and [LC402761] (20ug) can be purchased separately from OriGene.



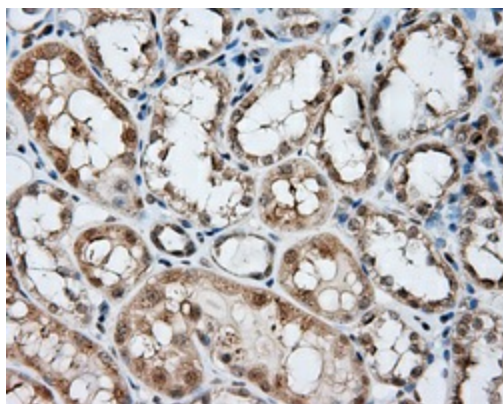
Equivalent amounts of cell lysates (10 ug per lane) of wild-type 293T cells (WT, Cat# LC810293T) and NIT2-Knockout 293T cells (KO, Cat# [LC812235]) were separated by SDS-PAGE and immunoblotted with anti-NIT2 monoclonal antibody [TA501081], (1:100). Then the blotted membrane was stripped and reprobed with anti-HSP90AB1 antibody ([TA500494]) as a loading control.



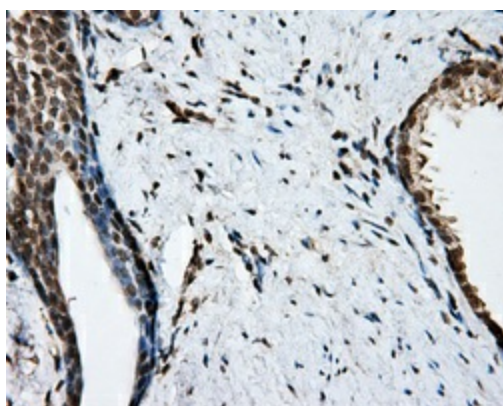
Immunohistochemical staining of paraffin-embedded colon tissue within the normal limits using anti-NIT2 mouse monoclonal antibody. (Heat-induced epitope retrieval by 10mM citric buffer, pH6.0, 100°C for 10min, [TA501081], Dilution 1:50)



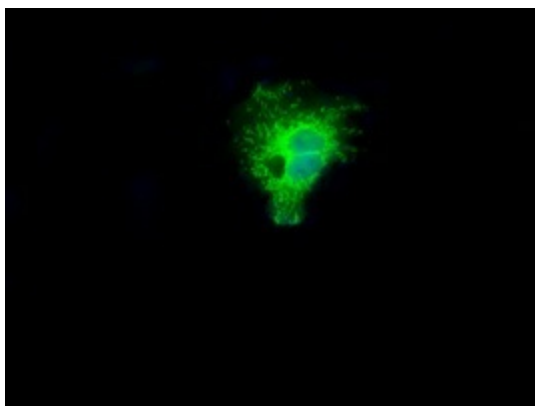
Immunohistochemical staining of paraffin-embedded Adenocarcinoma of colon tissue using anti-NIT2 mouse monoclonal antibody. (Heat-induced epitope retrieval by 10mM citric buffer, pH6.0, 100°C for 10min, [TA501081], Dilution 1:50)



Immunohistochemical staining of paraffin-embedded Kidney tissue within the normal limits using anti-NIT2 mouse monoclonal antibody. (Heat-induced epitope retrieval by 10mM citric buffer, pH6.0, 100°C for 10min, [TA501081], Dilution 1:50)



Immunohistochemical staining of paraffin-embedded Carcinoma of prostate tissue using anti-NIT2 mouse monoclonal antibody. (Heat-induced epitope retrieval by 10mM citric buffer, pH6.0, 100°C for 10min, [TA501081], Dilution 1:50)



Anti-NIT2 mouse monoclonal antibody ([TA501081]) immunofluorescent staining of COS7 cells transiently transfected by pCMV6-ENTRY NIT2 ([RC210660]).