

## Product datasheet for **TA501070AM**

### **PIM2 Mouse Monoclonal Antibody (Biotin conjugated) [Clone ID: OTI8H10]**

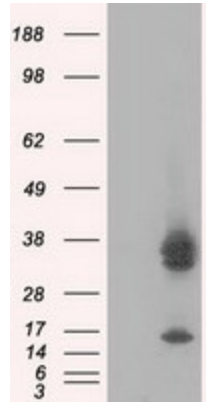
#### **Product data:**

<b>Product Type:</b>	Primary Antibodies
<b>Clone Name:</b>	OTI8H10
<b>Applications:</b>	FC, IF, IHC, IP, WB
<b>Recommended Dilution:</b>	WB 1:2000, IHC 1:50, IF 1:100, Flow 1:100, IP: 4ug/mL
<b>Reactivity:</b>	Human, Mouse, Rat
<b>Host:</b>	Mouse
<b>Isotype:</b>	IgG3
<b>Clonality:</b>	Monoclonal
<b>Immunogen:</b>	Full length human recombinant protein of human PIM2 (NP_006866) produced in HEK293T cell.
<b>Formulation:</b>	PBS (pH 7.3) containing 1% BSA, 50% glycerol and 0.02% sodium azide.
<b>Concentration:</b>	0.5 mg/ml
<b>Purification:</b>	Purified from mouse ascites fluids or tissue culture supernatant by affinity chromatography (protein A/G)
<b>Conjugation:</b>	Biotin
<b>Storage:</b>	Store at -20°C as received.
<b>Stability:</b>	Stable for 12 months from date of receipt.
<b>Predicted Protein Size:</b>	34 kDa
<b>Gene Name:</b>	Pim-2 proto-oncogene, serine/threonine kinase
<b>Database Link:</b>	<a href="#">NP_006866</a> <a href="#">Entrez Gene 18715 Mouse</a> <a href="#">Entrez Gene 317366 Rat</a> <a href="#">Entrez Gene 11040 Human</a> <a href="#">Q9P1W9</a>
<b>Background:</b>	This gene encodes a protooncogene that acts as a serine/threonine protein kinase. Studies determined the encoded protein functions to prevent apoptosis and to promote cell survival.
<b>Protein Families:</b>	Druggable Genome, Protein Kinase
<b>Protein Pathways:</b>	Acute myeloid leukemia



[View online »](#)

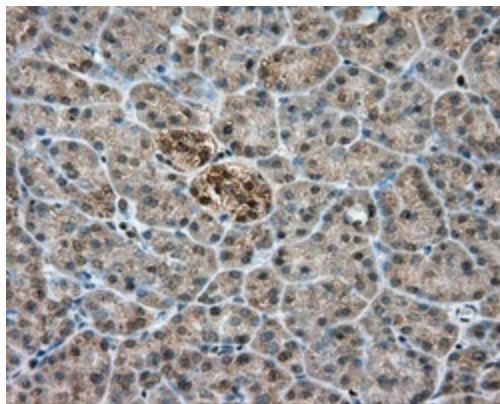
**Product images:**



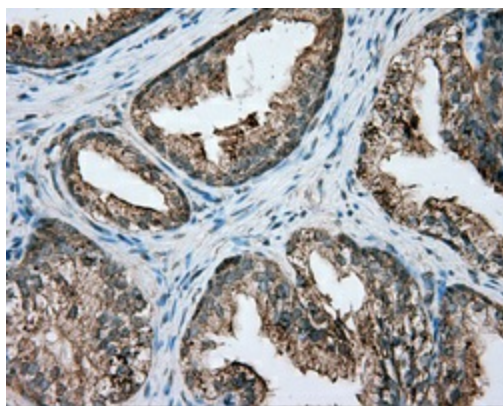
HEK293T cells were transfected with the pCMV6-ENTRY control (Left lane) or pCMV6-ENTRY PIM2 ([RC201933], Right lane) cDNA for 48 hrs and lysed. Equivalent amounts of cell lysates (5 ug per lane) were separated by SDS-PAGE and immunoblotted with anti-PIM2. Positive lysates [LY416355] (100ug) and [LC416355] (20ug) can be purchased separately from OriGene.



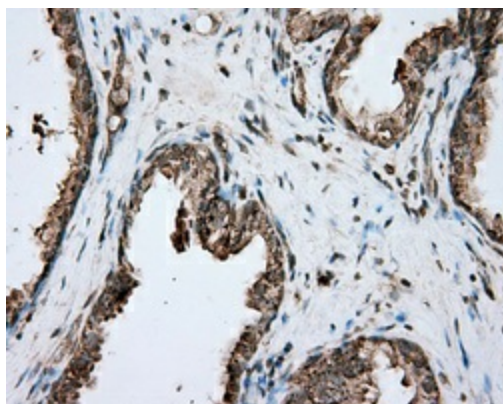
Immunohistochemical staining of paraffin-embedded colon tissue within the normal limits using anti-PIM2 mouse monoclonal antibody. (Heat-induced epitope retrieval by 10mM citric buffer, pH6.0, 100°C for 10min, [TA501070], Dilution 1:50)



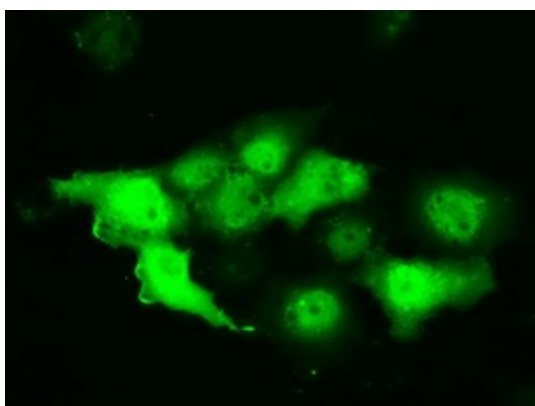
Immunohistochemical staining of paraffin-embedded pancreas tissue within the normal limits using anti-PIM2 mouse monoclonal antibody. (Heat-induced epitope retrieval by 10mM citric buffer, pH6.0, 100°C for 10min, [TA501070], Dilution 1:50)



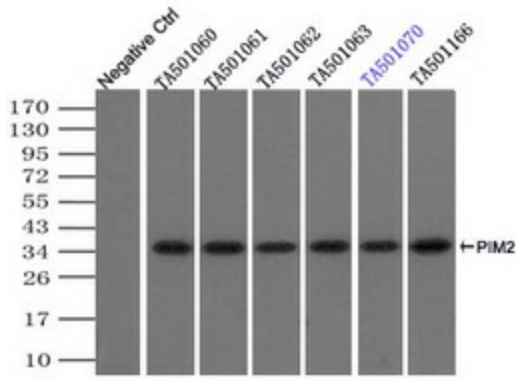
Immunohistochemical staining of paraffin-embedded prostate tissue within the normal limits using anti-PIM2 mouse monoclonal antibody. (Heat-induced epitope retrieval by 10mM citric buffer, pH6.0, 100°C for 10min, [TA501070], Dilution 1:50)



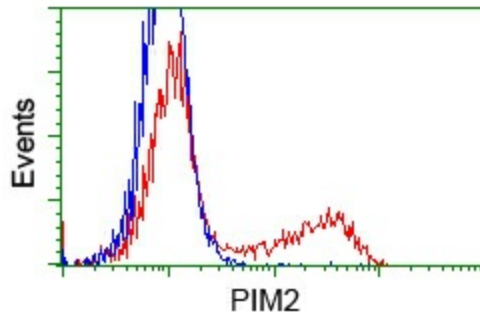
Immunohistochemical staining of paraffin-embedded Carcinoma of prostate tissue using anti-PIM2 mouse monoclonal antibody. (Heat-induced epitope retrieval by 10mM citric buffer, pH6.0, 100°C for 10min, [TA501070], Dilution 1:50)



Anti-PIM2 mouse monoclonal antibody ([TA501070]) immunofluorescent staining of COS7 cells transiently transfected by pCMV6-ENTRY PIM2 ([RC201933]).



Immunoprecipitation (IP) of PIM2 by using TrueMab monoclonal anti-PIM2 antibodies (Negative control: IP without adding anti-PIM2 antibody.). For each experiment, 500ul of DDK tagged PIM2 overexpression lysates (at 1:5 dilution with HEK293T lysate), 2ug of



HEK293T cells transfected with either pCMV6-ENTRY PIM2 ([RC201933]) (Red) or empty vector control plasmid (Blue) were immunostained with anti-PIM2 mouse monoclonal ([TA501070]), and then analyzed by flow cytometry.