

## Product datasheet for **TA501068M**

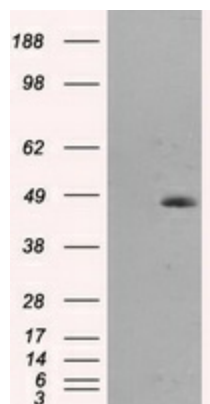
### **MTRF1L Mouse Monoclonal Antibody [Clone ID: OTI1H5]**

#### **Product data:**

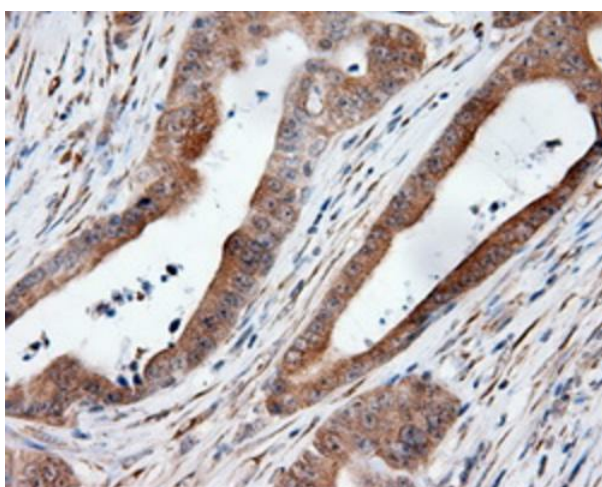
Product Type:	Primary Antibodies
Clone Name:	OTI1H5
Applications:	IF, IHC, WB
Recommended Dilution:	WB 1:1000, IHC 1:50, IF 1:100
Reactivity:	Human
Host:	Mouse
Isotype:	IgG1
Clonality:	Monoclonal
Immunogen:	Full length human recombinant protein of human MTRF1L (NP_061914) produced in HEK293T cell.
Formulation:	PBS (pH 7.3) containing 1% BSA, 50% glycerol and 0.02% sodium azide.
Concentration:	0.67 mg/ml
Purification:	Purified from mouse ascites fluids or tissue culture supernatant by affinity chromatography (protein A/G)
Conjugation:	Unconjugated
Storage:	Store at -20°C as received.
Stability:	Stable for 12 months from date of receipt.
Predicted Protein Size:	43.6 kDa
Gene Name:	mitochondrial translation release factor 1 like
Database Link:	<a href="#">NP_061914</a> <a href="#">Entrez Gene 54516 Human</a> <a href="#">Q9UGC7</a>
Background:	Mitochondrial peptide chain release factor that directs the termination of translation in response to the peptide chain termination codons UAA and UAG
Synonyms:	HMRF1L; MRF1L; mtRF1a

[View online »](#)

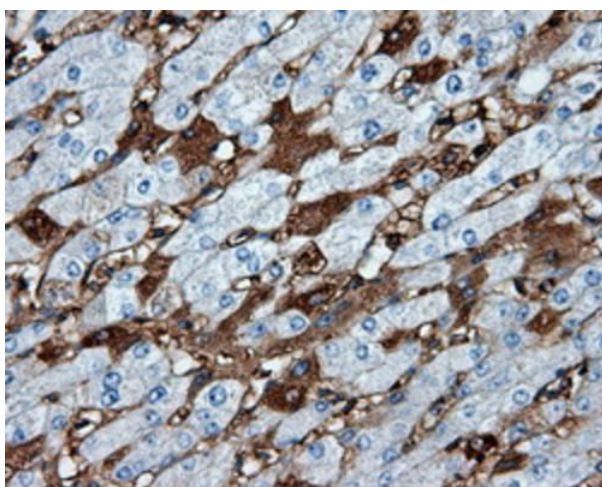
## Product images:



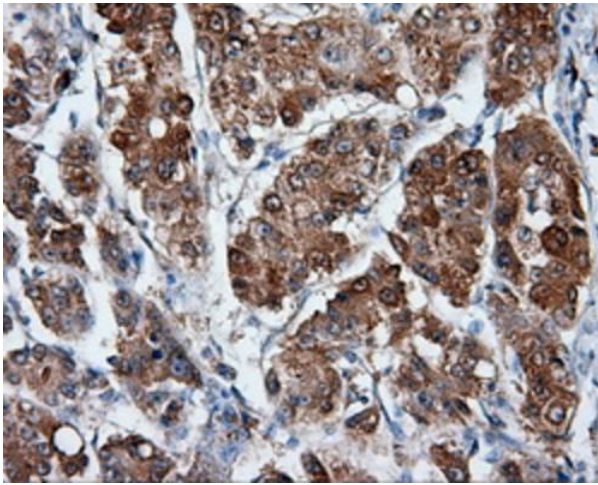
HEK293T cells were transfected with the pCMV6-ENTRY control (Left lane) or pCMV6-ENTRY MTRF1L ([RC204221], Right lane) cDNA for 48 hrs and lysed. Equivalent amounts of cell lysates (5 ug per lane) were separated by SDS-PAGE and immunoblotted with anti-MTRF1L. Positive lysates [LY402734] (100ug) and [LC402734] (20ug) can be purchased separately from OriGene.



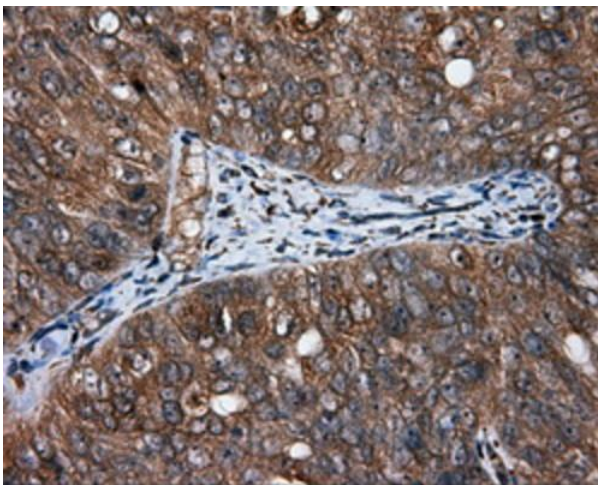
Immunohistochemical staining of paraffin-embedded Adenocarcinoma of colon tissue using anti-MTRF1L mouse monoclonal antibody. Heat-induced epitope retrieval by EDTA solution buffer pH 8.0 at 120°C for 3 min.



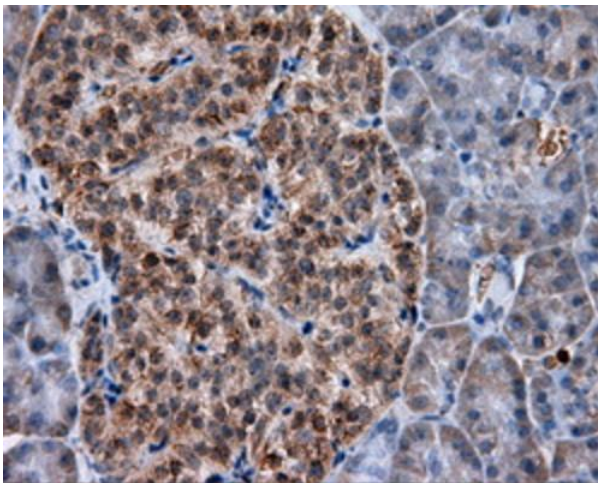
Immunohistochemical staining of paraffin-embedded liver tissue within the normal limits using anti-MTRF1L mouse monoclonal antibody. Heat-induced epitope retrieval by EDTA solution buffer pH 8.0 at 120°C for 3 min.



Immunohistochemical staining of paraffin-embedded Carcinoma of liver tissue using anti-MTRF1L mouse monoclonal antibody. Heat-induced epitope retrieval by EDTA solution buffer pH 8.0 at 120°C for 3 min.

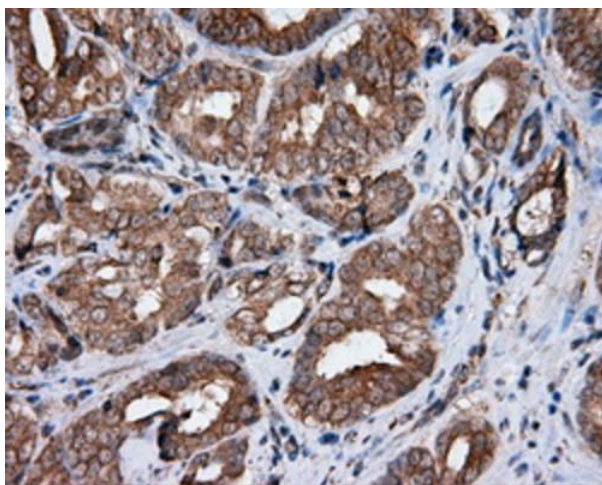


Immunohistochemical staining of paraffin-embedded Adenocarcinoma of ovary tissue using anti-MTRF1L mouse monoclonal antibody. Heat-induced epitope retrieval by EDTA solution buffer pH 8.0 at 120°C for 3 min.

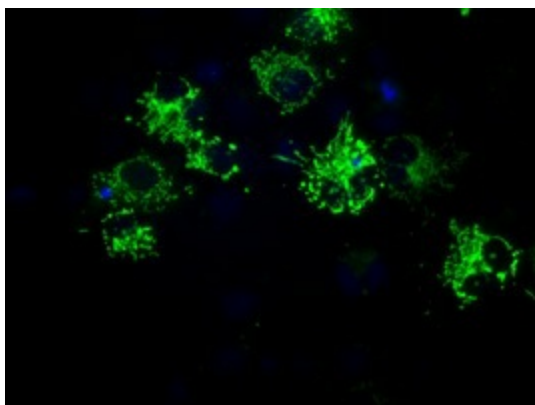


Immunohistochemical staining of paraffin-embedded pancreas tissue within the normal limits using anti-MTRF1L mouse monoclonal antibody. Heat-induced epitope retrieval by EDTA solution buffer pH 8.0 at 120°C for 3 min.





Immunohistochemical staining of paraffin-embedded Carcinoma of prostate tissue using anti-MTRF1L mouse monoclonal antibody. Heat-induced epitope retrieval by EDTA solution buffer pH 8.0 at 120°C for 3 min.



Anti-MTRF1L mouse monoclonal antibody ([TA501068]) immunofluorescent staining of COS7 cells transiently transfected by pCMV6-ENTRY MTRF1L ([RC204221]).