

## Product datasheet for **TA501065BM**

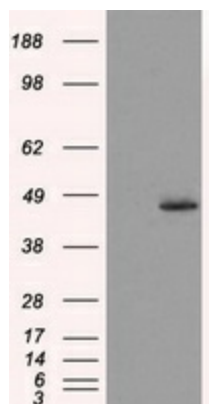
### **MTRF1L Mouse Monoclonal Antibody (HRP conjugated) [Clone ID: OTI1F11]**

#### **Product data:**

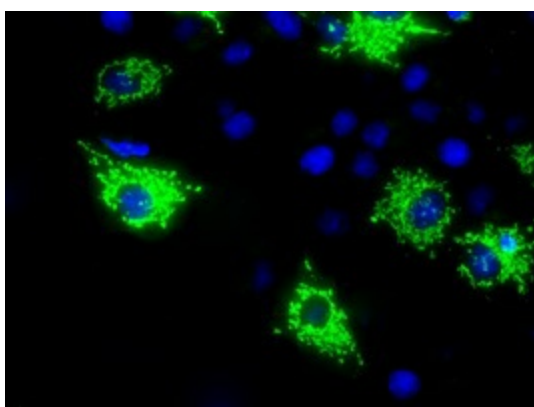
<b>Product Type:</b>	Primary Antibodies
<b>Clone Name:</b>	OTI1F11
<b>Applications:</b>	IF, WB
<b>Recommended Dilution:</b>	WB 1:1000, IF 1:100
<b>Reactivity:</b>	Human
<b>Host:</b>	Mouse
<b>Isotype:</b>	IgG1
<b>Clonality:</b>	Monoclonal
<b>Immunogen:</b>	Full length human recombinant protein of human MTRF1L (NP_061914) produced in HEK293T cell.
<b>Formulation:</b>	PBS (pH 7.3) containing 1% BSA, 50% glycerol.
<b>Concentration:</b>	0.5 mg/ml
<b>Purification:</b>	Purified from mouse ascites fluids or tissue culture supernatant by affinity chromatography (protein A/G)
<b>Conjugation:</b>	HRP
<b>Storage:</b>	Store at -20°C as received.
<b>Stability:</b>	Stable for 12 months from date of receipt.
<b>Predicted Protein Size:</b>	43.6 kDa
<b>Gene Name:</b>	mitochondrial translation release factor 1 like
<b>Database Link:</b>	<a href="#">NP_061914</a> <a href="#">Entrez Gene 54516 Human</a> <a href="#">Q9UGC7</a>
<b>Background:</b>	Mitochondrial peptide chain release factor that directs the termination of translation in response to the peptide chain termination codons UAA and UAG
<b>Synonyms:</b>	HMRF1L; MRF1L; mtRF1a



[View online »](#)

**Product images:**

HEK293T cells were transfected with the pCMV6-ENTRY control (Left lane) or pCMV6-ENTRY MTRF1L ([RC204221], Right lane) cDNA for 48 hrs and lysed. Equivalent amounts of cell lysates (5 ug per lane) were separated by SDS-PAGE and immunoblotted with anti-MTRF1L. Positive lysates [LY402734] (100ug) and [LC402734] (20ug) can be purchased separately from OriGene.



Anti-MTRF1L mouse monoclonal antibody ([TA501065]) immunofluorescent staining of COS7 cells transiently transfected by pCMV6-ENTRY MTRF1L ([RC204221]).