

Product datasheet for **TA501064**

PIM2 Mouse Monoclonal Antibody [Clone ID: OTI10A12]

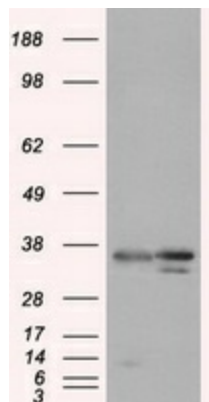
Product data:

Product Type:	Primary Antibodies
Clone Name:	OTI10A12
Applications:	FC, IHC, WB
Recommended Dilution:	WB 1:2000, IHC 1:50, Flow 1:100
Reactivity:	Human, Mouse, Rat
Host:	Mouse
Isotype:	IgG2a
Clonality:	Monoclonal
Immunogen:	Full length human recombinant protein of human PIM2 (NP_006866) produced in HEK293T cell.
Formulation:	PBS (pH 7.3) containing 1% BSA, 50% glycerol and 0.02% sodium azide.
Concentration:	0.84 mg/ml
Purification:	Purified from mouse ascites fluids or tissue culture supernatant by affinity chromatography (protein A/G)
Conjugation:	Unconjugated
Storage:	Store at -20°C as received.
Stability:	Stable for 12 months from date of receipt.
Predicted Protein Size:	34.2 kDa
Gene Name:	Pim-2 proto-oncogene, serine/threonine kinase
Database Link:	NP_006866 Entrez Gene 18715 Mouse Entrez Gene 317366 Rat Entrez Gene 11040 Human Q9P1W9
Background:	This gene encodes a protooncogene that acts as a serine/threonine protein kinase. Studies determined the encoded protein functions to prevent apoptosis and to promote cell survival.
Protein Families:	Druggable Genome, Protein Kinase
Protein Pathways:	Acute myeloid leukemia

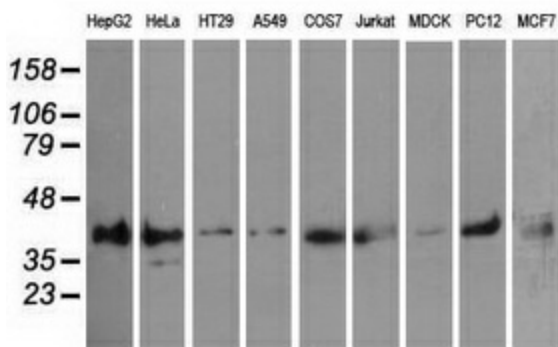


[View online »](#)

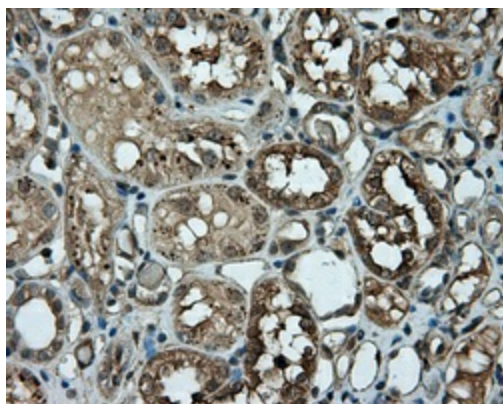
Product images:



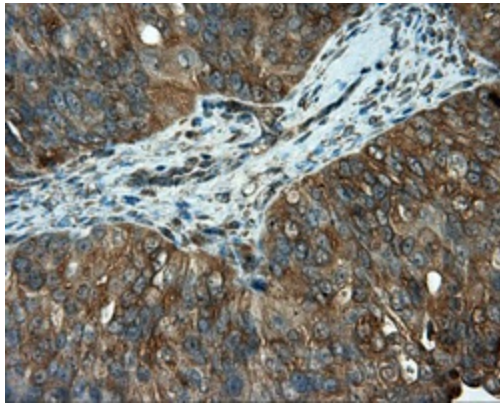
HEK293T cells were transfected with the pCMV6-ENTRY control (Left lane) or pCMV6-ENTRY PIM2 ([RC201933], Right lane) cDNA for 48 hrs and lysed. Equivalent amounts of cell lysates (5 ug per lane) were separated by SDS-PAGE and immunoblotted with anti-PIM2. Positive lysates [LY416355] (100ug) and [LC416355] (20ug) can be purchased separately from OriGene.



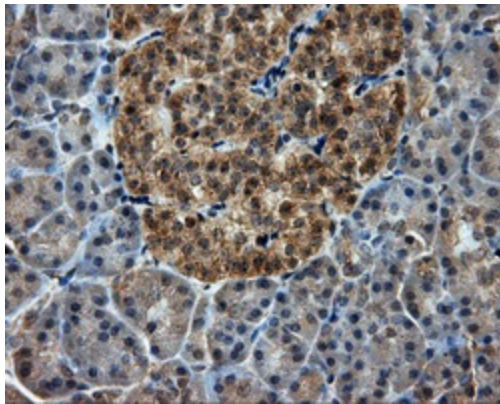
Western blot analysis of extracts (35ug) from 9 different cell lines by using anti-PIM2 monoclonal antibody.



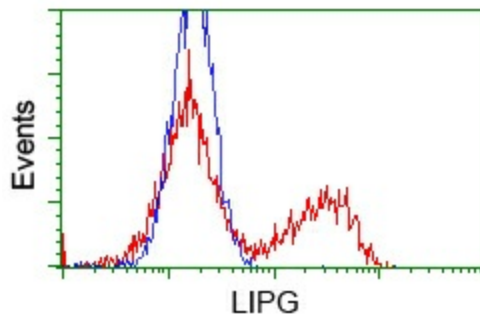
Immunohistochemical staining of paraffin-embedded Kidney tissue within the normal limits using anti-PIM2 mouse monoclonal antibody. (Heat-induced epitope retrieval by 10mM citric buffer, pH6.0, 100°C for 10min, TA501064, Dilution 1:50)



Immunohistochemical staining of paraffin-embedded Adenocarcinoma of ovary tissue using anti-PIM2 mouse monoclonal antibody. (Heat-induced epitope retrieval by 10mM citric buffer, pH6.0, 100°C for 10min, TA501064, Dilution 1:50)



Immunohistochemical staining of paraffin-embedded pancreas tissue within the normal limits using anti-PIM2 mouse monoclonal antibody. (Heat-induced epitope retrieval by 10mM citric buffer, pH6.0, 100°C for 10min, TA501064, Dilution 1:50)



HEK293T cells transfected with either pCMV6-ENTRY PIM2 ([RC201933]) (Red) or empty vector control plasmid (Blue) were immunostained with anti-PIM2 mouse monoclonal (TA501064), and then analyzed by flow cytometry.