

## Product datasheet for **TA501055S**

### **RIC8 (RIC8A) Mouse Monoclonal Antibody [Clone ID: OTI3G3]**

#### **Product data:**

<b>Product Type:</b>	Primary Antibodies
<b>Clone Name:</b>	OTI3G3
<b>Applications:</b>	IF, IHC, WB
<b>Recommended Dilution:</b>	WB 1:1000, IHC 1:50, IF 1:100
<b>Reactivity:</b>	Human, Mouse, Rat
<b>Host:</b>	Mouse
<b>Isotype:</b>	IgG1
<b>Clonality:</b>	Monoclonal
<b>Immunogen:</b>	Full length human recombinant protein of human RIC8A (NP_068751) produced in HEK293T cell.
<b>Formulation:</b>	PBS (pH 7.3) containing 1% BSA, 50% glycerol and 0.02% sodium azide.
<b>Concentration:</b>	0.83 mg/ml
<b>Purification:</b>	Purified from mouse ascites fluids or tissue culture supernatant by affinity chromatography (protein A/G)
<b>Conjugation:</b>	Unconjugated
<b>Storage:</b>	Store at -20°C as received.
<b>Stability:</b>	Stable for 12 months from date of receipt.
<b>Predicted Protein Size:</b>	59.6 kDa
<b>Gene Name:</b>	RIC8 guanine nucleotide exchange factor A
<b>Database Link:</b>	<a href="#">NP_068751</a> <a href="#">Entrez Gene 101489 Mouse</a> <a href="#">Entrez Gene 293614 Rat</a> <a href="#">Entrez Gene 60626 Human</a> <a href="#">Q9NPQ8</a>



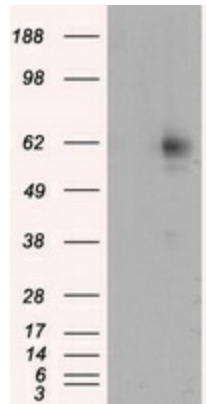
[View online »](#)

**Background:**

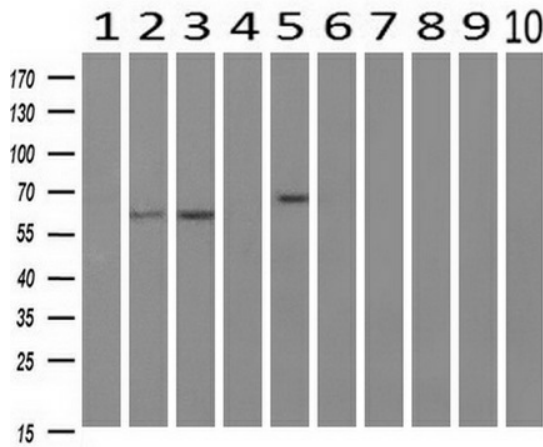
Guanine nucleotide exchange factor (GEF), which can activate some, but not all, G-alpha proteins. Able to activate GNAI1, GNAO1 and GNAQ, but not GNAS by exchanging bound GDP for free GTP. Involved in regulation of microtubule pulling forces during mitotic movement of chromosomes by stimulating G(i)-alpha protein, possibly leading to release G(i)-alpha-GTP and NuMA proteins from the NuMA-GPSM2-G(i)-alpha-GDP complex (By similarity). Also acts as an activator for G(q)-alpha (GNAQ) protein by enhancing the G(q)-coupled receptor-mediated ERK activation

**Synonyms:**

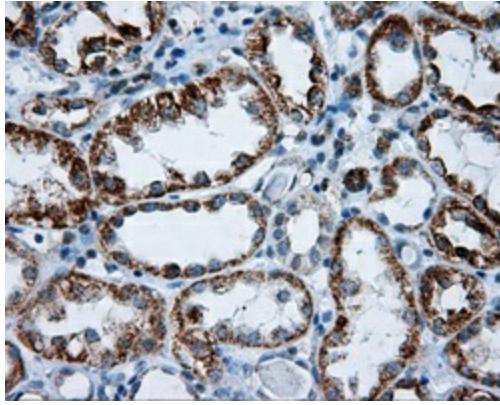
RIC8

**Product images:**


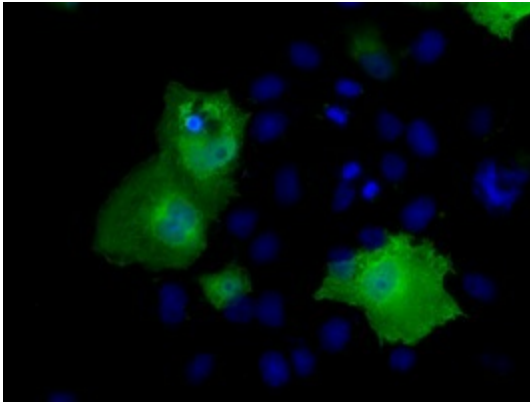
HEK293T cells were transfected with the pCMV6-ENTRY control (Cat# [PS100001], Left lane) or pCMV6-ENTRY RIC8A (Cat# [RC211359], Right lane) cDNA for 48 hrs and lysed. Equivalent amounts of cell lysates (5 ug per lane) were separated by SDS-PAGE and immunoblotted with anti-RIC8A(Cat# [TA501055]). Positive lysates [LY402886] (100ug) and [LC402886] (20ug) can be purchased separately from OriGene.



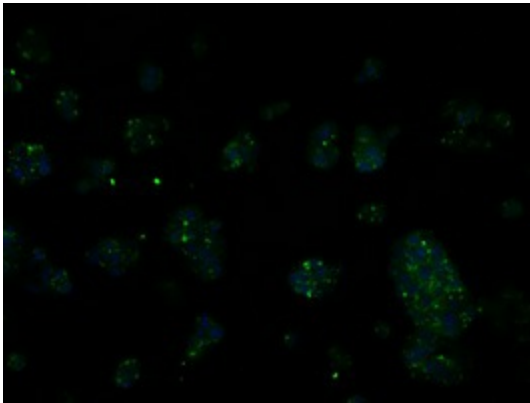
Western blot analysis of extracts (10ug) from 10 Human tissue by using anti-RIC8A monoclonal antibody at 1:200 (1: Testis; 2: Omentum; 3: Uterus; 4: Breast; 5: Brain; 6: Liver; 7: Ovary; 8: Thyroid gland; 9: colon; 10: spleen).



Immunohistochemical staining of paraffin-embedded Kidney tissue within the normal limits using anti-RIC8A mouse monoclonal antibody. (Heat-induced epitope retrieval by 10mM citric buffer, pH6.0, 100°C for 10min, [TA501055], Dilution 1:50)



Anti-RIC8A mouse monoclonal antibody ([TA501055]) immunofluorescent staining of COS7 cells transiently transfected by pCMV6-ENTRY RIC8A ([RC211359]).



Immunofluorescent staining of HepG2 cells using anti-RIC8A mouse monoclonal antibody ([TA501055]).