

## Product datasheet for **TA501053M**

### **RDH11 Mouse Monoclonal Antibody [Clone ID: OT1B4]**

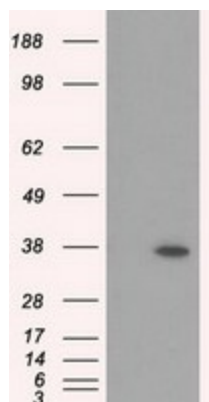
#### **Product data:**

Product Type:	Primary Antibodies
Clone Name:	OT1B4
Applications:	FC, IF, IHC, WB
Recommended Dilution:	WB 1:2000, IHC 1:50, IF 1:100, Flow 1:100
Reactivity:	Human, Mouse
Host:	Mouse
Isotype:	IgG2a
Clonality:	Monoclonal
Immunogen:	Full length human recombinant protein of human RDH11(NP_057110) produced in HEK293T cell.
Formulation:	PBS (pH 7.3) containing 1% BSA, 50% glycerol and 0.02% sodium azide.
Concentration:	0.99 mg/ml
Purification:	Purified from mouse ascites fluids or tissue culture supernatant by affinity chromatography (protein A/G)
Conjugation:	Unconjugated
Storage:	Store at -20°C as received.
Stability:	Stable for 12 months from date of receipt.
Predicted Protein Size:	35.2 kDa
Gene Name:	retinol dehydrogenase 11
Database Link:	<a href="#">NP_057110</a> <a href="#">Entrez Gene 17252 Mouse</a> <a href="#">Entrez Gene 51109 Human</a> <a href="#">Q8TC12</a>
Background:	RHD11, a member of the short-chain dehydrogenase/reductase (SDR) superfamily of oxidoreductases, is expressed at high levels in prostate epithelium, and its expression is regulated by androgens. [supplied by OMIM]. COMPLETENESS: complete on the 3' end.
Synonyms:	ARSDR1; CGI82; HCBP12; MDT1; PSDR1; RALR1; RDJCSS; SCALD; SDR7C1
Protein Families:	Druggable Genome

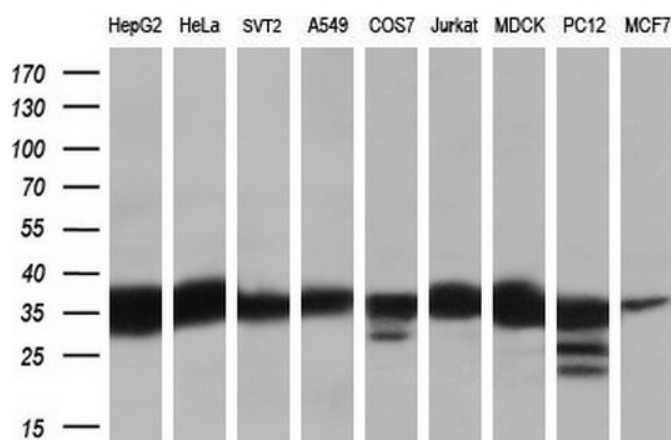

[View online »](#)

**Protein Pathways:** Metabolic pathways, Retinol metabolism

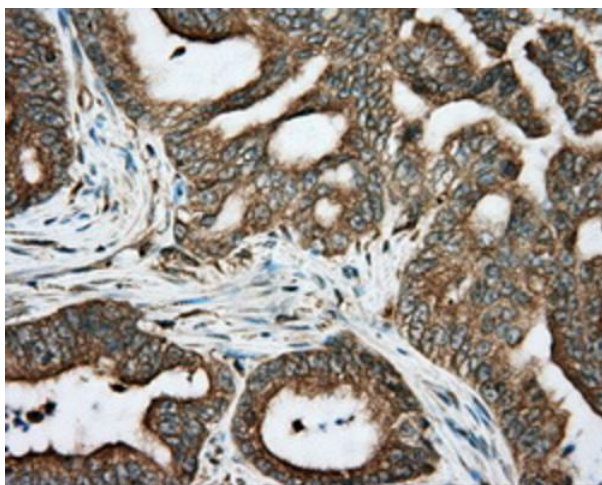
## Product images:



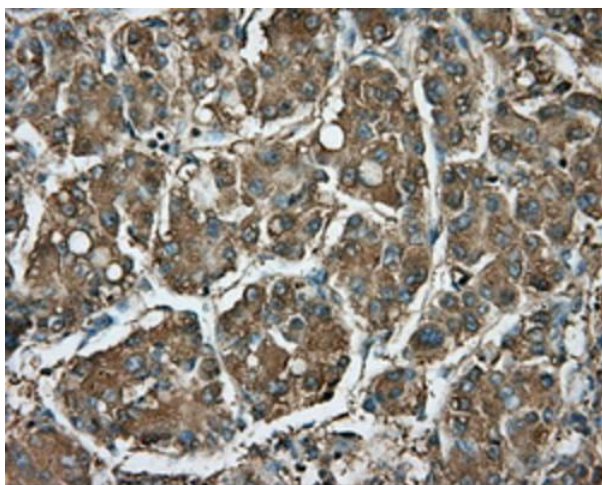
HEK293T cells were transfected with the pCMV6-ENTRY control (Cat# [PS100001], Left lane) or pCMV6-ENTRY RDH11 (Cat# [RC205003], Right lane) cDNA for 48 hrs and lysed. Equivalent amounts of cell lysates (5 ug per lane) were separated by SDS-PAGE and immunoblotted with anti-RDH11 (Cat# [TA501053]). Positive lysates [LY402488] (100ug) and [LC402488] (20ug) can be purchased separately from OriGene.



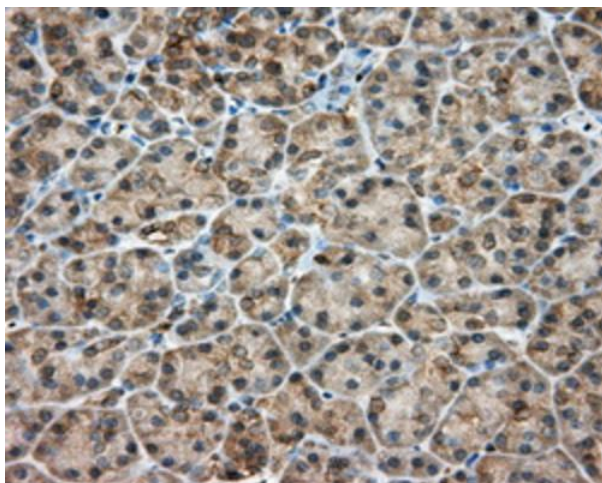
Western blot analysis of extracts (35ug) from 9 different cell lines by using anti-RDH11 monoclonal antibody (HepG2: human; HeLa: human; SVT2: mouse; A549: human; COS7: monkey; Jurkat: human; MDCK: canine; PC12: rat; MCF7: human) (1:200).



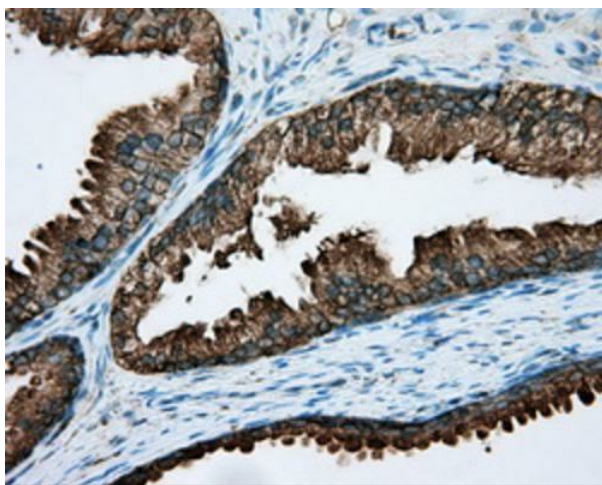
Immunohistochemical staining of paraffin-embedded Adenocarcinoma of colon tissue using anti-RDH11 mouse monoclonal antibody. Heat-induced epitope retrieval by EDTA solution buffer pH 8.0 at 120°C for 3 min.



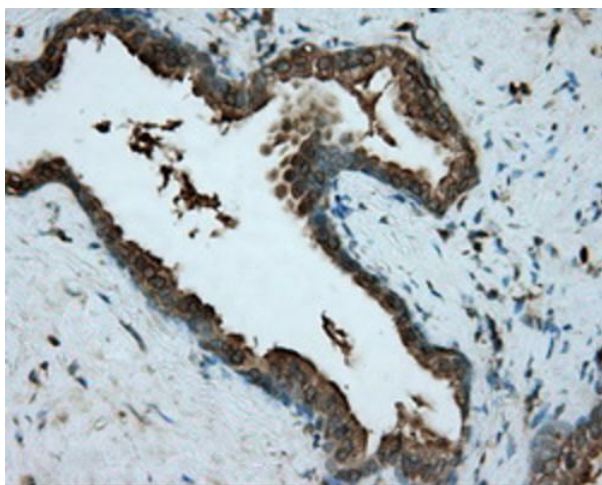
Immunohistochemical staining of paraffin-embedded Carcinoma of liver tissue using anti-RDH11 mouse monoclonal antibody. Heat-induced epitope retrieval by EDTA solution buffer pH 8.0 at 120°C for 3 min.



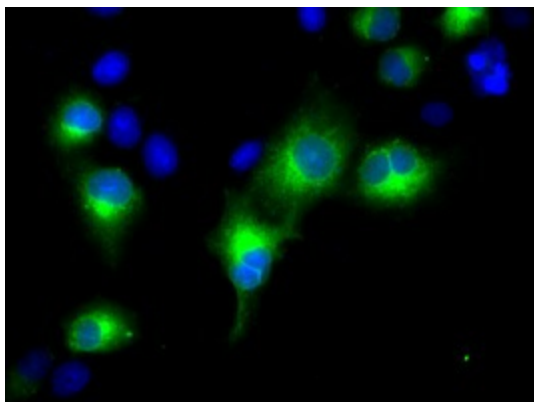
Immunohistochemical staining of paraffin-embedded pancreas tissue within the normal limits using anti-RDH11 mouse monoclonal antibody. Heat-induced epitope retrieval by EDTA solution buffer pH 8.0 at 120°C for 3 min.



Immunohistochemical staining of paraffin-embedded prostate tissue within the normal limits using anti-RDH11 mouse monoclonal antibody. Heat-induced epitope retrieval by EDTA solution buffer pH 8.0 at 120°C for 3 min.

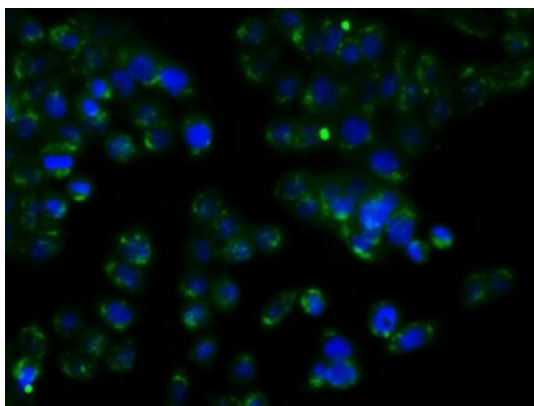


Immunohistochemical staining of paraffin-embedded Carcinoma of prostate tissue using anti-RDH11 mouse monoclonal antibody. Heat-induced epitope retrieval by EDTA solution buffer pH 8.0 at 120°C for 3 min.

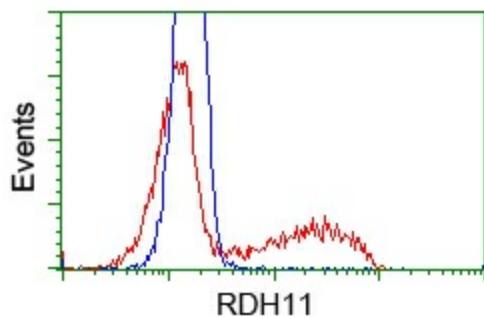


Anti-RDH11 mouse monoclonal antibody ([TA501053]) immunofluorescent staining of COS7 cells transiently transfected by pCMV6-ENTRY RDH11 ([RC205003]).





Immunofluorescent staining of HT29 cells using anti-RDH11 mouse monoclonal antibody ([TA501053]).



HEK293T cells transfected with either pCMV6-ENTRY RDH11 ([RC205003]) (Red) or empty vector control plasmid (Blue) were immunostained with anti-RDH11 mouse monoclonal ([TA501053]), and then analyzed by flow cytometry.