

## Product datasheet for **TA501052**

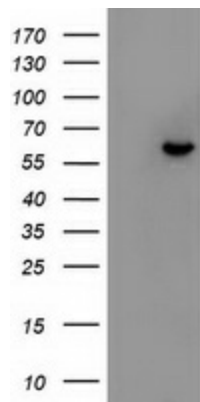
### FRK Mouse Monoclonal Antibody [Clone ID: OTI3E2]

#### Product data:

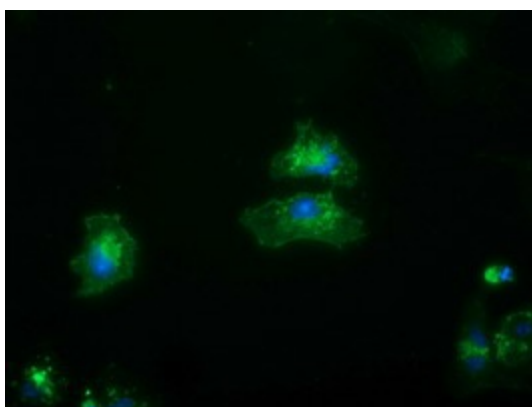
Product Type:	Primary Antibodies
Clone Name:	OTI3E2
Applications:	FC, IF, WB
Recommended Dilution:	WB 1:500, IF 1:100, FLOW 1:100
Reactivity:	Human, Mouse, Rat
Host:	Mouse
Isotype:	IgG1
Clonality:	Monoclonal
Immunogen:	Full length human recombinant protein of human FRK (NP_002022) produced in HEK293T cell.
Formulation:	PBS (pH 7.3) containing 1% BSA, 50% glycerol and 0.02% sodium azide.
Concentration:	0.92 mg/ml
Purification:	Purified from mouse ascites fluids or tissue culture supernatant by affinity chromatography (protein A/G)
Conjugation:	Unconjugated
Storage:	Store at -20°C as received.
Stability:	Stable for 12 months from date of receipt.
Predicted Protein Size:	58.1 kDa
Gene Name:	fyn related Src family tyrosine kinase
Database Link:	<a href="#">NP_002022</a> <a href="#">Entrez Gene 14302 Mouse</a> <a href="#">Entrez Gene 79209 Rat</a> <a href="#">Entrez Gene 2444 Human</a> <a href="#">P42685</a>
Background:	The protein encoded by this gene belongs to the TYR family of protein kinases. This tyrosine kinase is a nuclear protein and may function during G1 and S phase of the cell cycle and suppress growth. [provided by RefSeq]. COMPLETENESS: complete on the 3' end.
Synonyms:	GTK; PTK5; RAK
Protein Families:	Druggable Genome, Protein Kinase



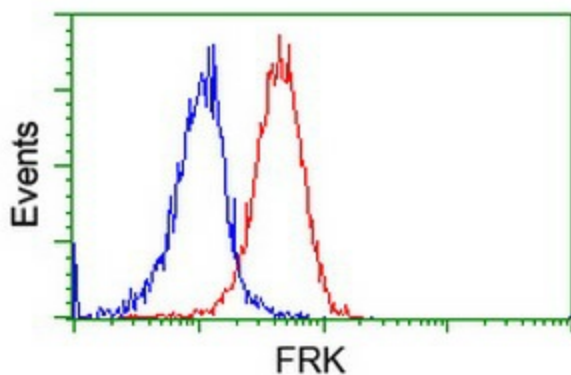
[View online »](#)

**Product images:**

HEK293T cells were transfected with the pCMV6-ENTRY control (Left lane) or pCMV6-ENTRY FRK ([RC204460], Right lane) cDNA for 48 hrs and lysed. Equivalent amounts of cell lysates (5 ug per lane) were separated by SDS-PAGE and immunoblotted with anti-FRK. Positive lysates [LY400740] (100ug) and [LC400740] (20ug) can be purchased separately from OriGene.



Anti-FRK mouse monoclonal antibody (TA501052) immunofluorescent staining of COS7 cells transiently transfected by pCMV6-ENTRY FRK ([RC204460]).



Flow cytometric Analysis of Jurkat cells, using anti-FRK antibody (TA501052), (Red), compared to a nonspecific negative control antibody, (Blue).