

Product datasheet for **TA501049S**

BHMT Mouse Monoclonal Antibody [Clone ID: OTI2F6]

Product data:

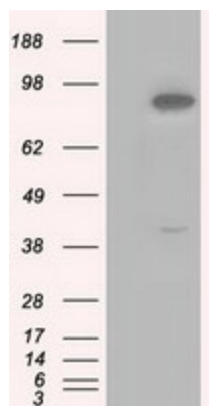
Product Type:	Primary Antibodies
Clone Name:	OTI2F6
Applications:	IHC, WB
Recommended Dilution:	WB 1:1000, IHC 1:50
Reactivity:	Human, Mouse, Rat
Host:	Mouse
Isotype:	IgG3
Clonality:	Monoclonal
Immunogen:	Full length human recombinant protein of human BHMT (NP_001704) produced in HEK293T cell.
Formulation:	PBS (pH 7.3) containing 1% BSA, 50% glycerol and 0.02% sodium azide.
Concentration:	1 mg/ml
Purification:	Purified from mouse ascites fluids or tissue culture supernatant by affinity chromatography (protein A/G)
Conjugation:	Unconjugated
Storage:	Store at -20°C as received.
Stability:	Stable for 12 months from date of receipt.
Predicted Protein Size:	44.8 kDa
Gene Name:	betaine--homocysteine S-methyltransferase
Database Link:	NP_001704 Entrez Gene 12116 Mouse Entrez Gene 81508 Rat Entrez Gene 635 Human Q93088
Background:	This gene encodes a cytosolic enzyme that catalyzes the conversion of betaine and homocysteine to dimethylglycine and methionine, respectively. Defects in this gene could lead to hyperhomocyst(e)inemia, but such a defect has not yet been observed.
Synonyms:	BHMT1; HEL-S-61p



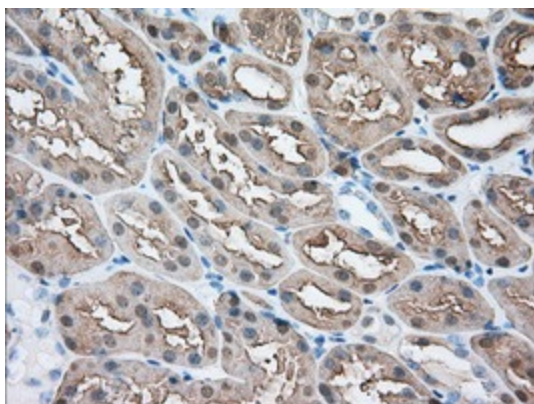
[View online »](#)

Protein Pathways: Cysteine and methionine metabolism, Glycine, serine and threonine metabolism, Metabolic pathways

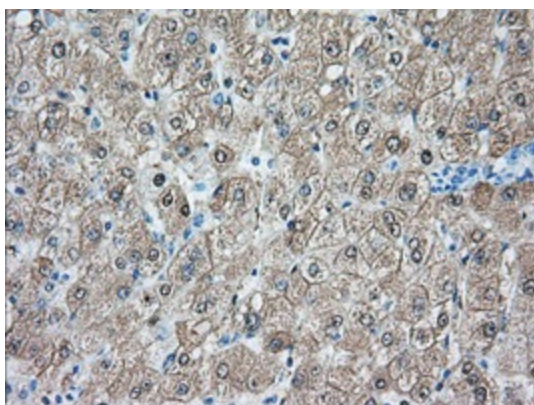
Product images:



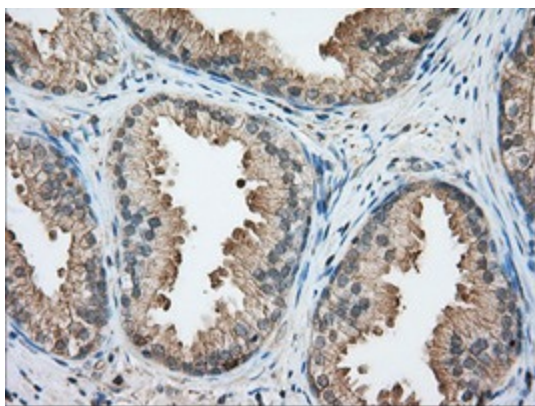
HEK293T cells were transfected with the pCMV6-ENTRY control (Left lane) or pCMV6-ENTRY BHMT ([RC203148], Right lane) cDNA for 48 hrs and lysed. Equivalent amounts of cell lysates (5 ug per lane) were separated by SDS-PAGE and immunoblotted with anti-BHMT. Positive lysates [LY400644] (100ug) and [LC400644] (20ug) can be purchased separately from OriGene.



Immunohistochemical staining of paraffin-embedded Human Kidney tissue within the normal limits using anti-BHMT mouse monoclonal antibody. (Heat-induced epitope retrieval by 10mM citric buffer, pH6.0, 100°C for 10min, [TA501049])



Immunohistochemical staining of paraffin-embedded Human liver tissue within the normal limits using anti-BHMT mouse monoclonal antibody. (Heat-induced epitope retrieval by 10mM citric buffer, pH6.0, 100°C for 10min, [TA501049])



Immunohistochemical staining of paraffin-embedded Human prostate tissue within the normal limits using anti-BHMT mouse monoclonal antibody. (Heat-induced epitope retrieval by 10mM citric buffer, pH6.0, 100°C for 10min, [TA501049])