

## Product datasheet for **TA501046S**

### Natriuretic Peptide Receptor C (NPR3) Mouse Monoclonal Antibody [Clone ID: OTI4A1]

#### Product data:

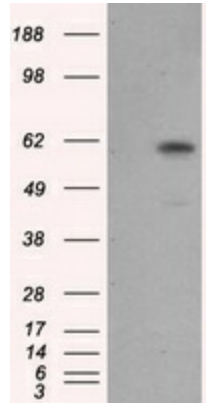
Product Type:	Primary Antibodies
Clone Name:	OTI4A1
Applications:	IF, IHC, WB
Recommended Dilution:	WB 1:2000, IHC 1:50, IF 1:100
Reactivity:	Human, Mouse, Rat
Host:	Mouse
Isotype:	IgG3
Clonality:	Monoclonal
Immunogen:	Full length human recombinant protein of human NPR3 (NP_000899) produced in HEK293T cell.
Formulation:	PBS (pH 7.3) containing 1% BSA, 50% glycerol and 0.02% sodium azide.
Concentration:	0.78 mg/ml
Purification:	Purified from mouse ascites fluids or tissue culture supernatant by affinity chromatography (protein A/G)
Conjugation:	Unconjugated
Storage:	Store at -20°C as received.
Stability:	Stable for 12 months from date of receipt.
Predicted Protein Size:	59.8 kDa
Gene Name:	natriuretic peptide receptor 3
Database Link:	<a href="#">NP_000899</a> <a href="#">Entrez Gene 18162 Mouse</a> <a href="#">Entrez Gene 25339 Rat</a> <a href="#">Entrez Gene 4883 Human</a> <a href="#">P17342</a>
Background:	The family of natriuretic peptides (see MIM 108780) elicit a number of vascular, renal, and endocrine effects that are important in the maintenance of blood pressure and extracellular fluid volume. These effects are mediated by specific binding of the peptides to cell surface receptors in the vasculature, kidney, adrenal, and brain
Synonyms:	ANP-C; ANPR-C; ANPRC; C5orf23; GUCY2B; NPR-C; NPRC



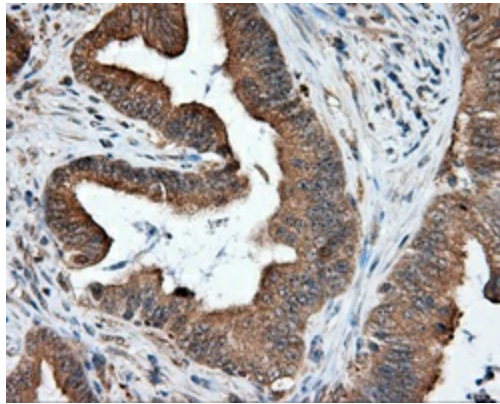
[View online »](#)

Protein Families: Druggable Genome, Transmembrane

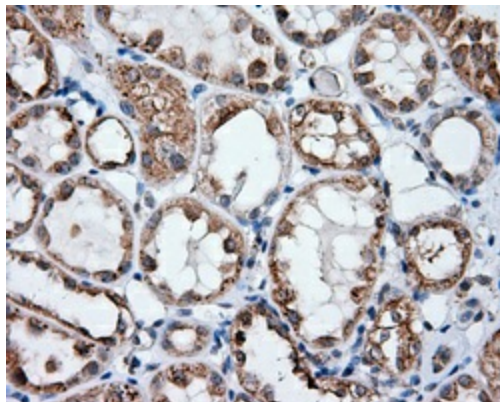
**Product images:**



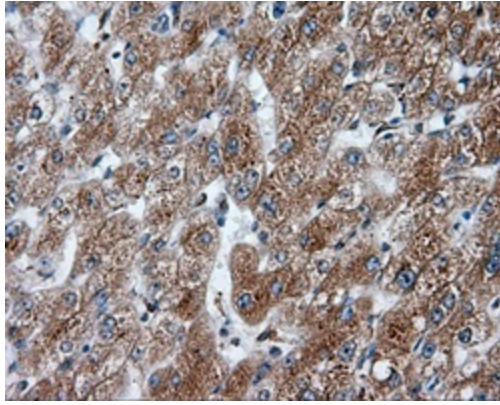
HEK293T cells were transfected with the pCMV6-ENTRY control (Left lane) or pCMV6-ENTRY NPR3 ([RC219453], Right lane) cDNA for 48 hrs and lysed. Equivalent amounts of cell lysates (5 ug per lane) were separated by SDS-PAGE and immunoblotted with anti-NPR3. Positive lysates [LY424462] (100ug) and [LC424462] (20ug) can be purchased separately from OriGene.



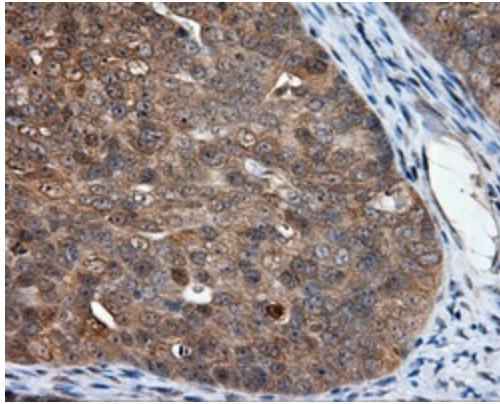
Immunohistochemical staining of paraffin-embedded Adenocarcinoma of colon tissue using anti-NPR3 mouse monoclonal antibody. (Heat-induced epitope retrieval by 10mM citric buffer, pH6.0, 100°C for 10min, [TA501046], Dilution 1:50)



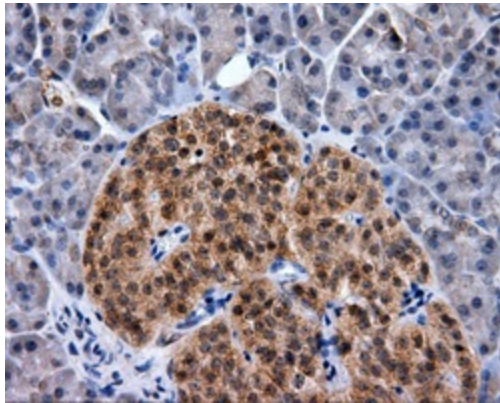
Immunohistochemical staining of paraffin-embedded Kidney tissue within the normal limits using anti-NPR3 mouse monoclonal antibody. (Heat-induced epitope retrieval by 10mM citric buffer, pH6.0, 100°C for 10min, [TA501046], Dilution 1:50)



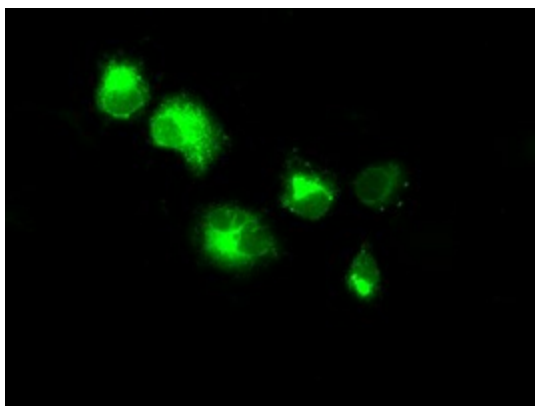
Immunohistochemical staining of paraffin-embedded liver tissue within the normal limits using anti-NPR3 mouse monoclonal antibody. (Heat-induced epitope retrieval by 10mM citric buffer, pH6.0, 100°C for 10min, [TA501046], Dilution 1:50)



Immunohistochemical staining of paraffin-embedded Adenocarcinoma of ovary tissue using anti-NPR3 mouse monoclonal antibody. (Heat-induced epitope retrieval by 10mM citric buffer, pH6.0, 100°C for 10min, [TA501046], Dilution 1:50)



Immunohistochemical staining of paraffin-embedded pancreas tissue within the normal limits using anti-NPR3 mouse monoclonal antibody. (Heat-induced epitope retrieval by 10mM citric buffer, pH6.0, 100°C for 10min, [TA501046], Dilution 1:50)



Anti-NPR3 mouse monoclonal antibody ([TA501046]) immunofluorescent staining of COS7 cells transiently transfected by pCMV6-ENTRY NPR3 ([RC219453]).