

Product datasheet for **TA501041BM**

LIPG Mouse Monoclonal Antibody (HRP conjugated) [Clone ID: OT18F8]

Product data:

Product Type:	Primary Antibodies
Clone Name:	OT18F8
Applications:	FC, IF, IHC, IP, WB
Recommended Dilution:	WB 1:2000, IHC 1:50, IF 1:100, FLOW 1:100, IP 2ug/500ul
Reactivity:	Human
Host:	Mouse
Isotype:	IgG1
Clonality:	Monoclonal
Immunogen:	Full length human recombinant protein of human LIPG (NP_006024) produced in HEK293T cell.
Formulation:	PBS (pH 7.3) containing 1% BSA, 50% glycerol.
Concentration:	0.5 mg/ml
Purification:	Purified from mouse ascites fluids or tissue culture supernatant by affinity chromatography (protein A/G)
Conjugation:	HRP
Storage:	Store at -20°C as received.
Stability:	Stable for 12 months from date of receipt.
Predicted Protein Size:	54.6 kDa
Gene Name:	lipase G, endothelial type
Database Link:	NP_006024 Entrez Gene 9388 Human Q9Y5X9
Background:	The protein encoded by this gene has substantial phospholipase activity and may be involved in lipoprotein metabolism and vascular biology. This protein is designated a member of the TG lipase family by its sequence and characteristic lid region which provides substrate specificity for enzymes of the TG lipase family. [provided by RefSeq]
Synonyms:	EDL; EL; PRO719

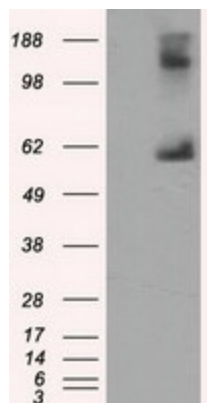


[View online »](#)

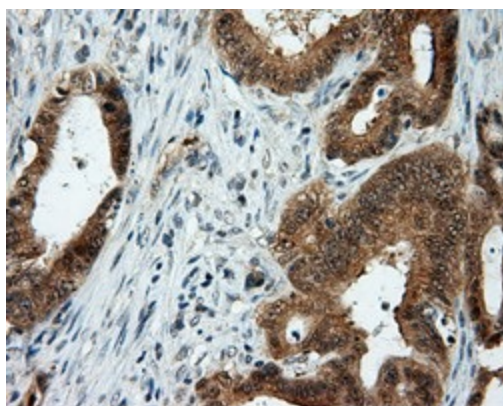
Protein Families: Druggable Genome, Secreted Protein

Protein Pathways: Glycerolipid metabolism, Metabolic pathways

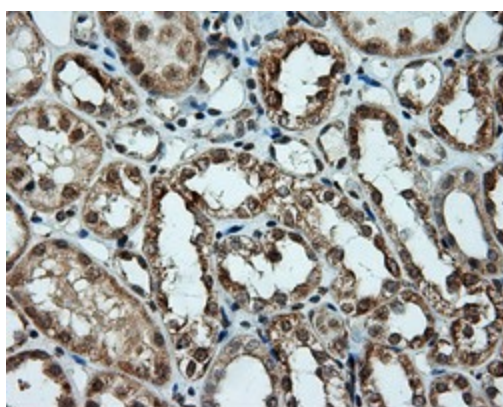
Product images:



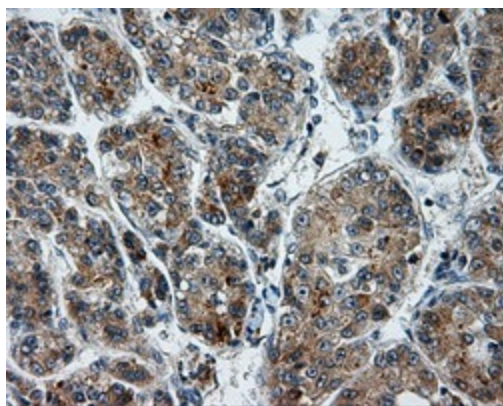
HEK293T cells were transfected with the pCMV6-ENTRY control (Left lane) or pCMV6-ENTRY LIPG ([RC209248], Right lane) cDNA for 48 hrs and lysed. Equivalent amounts of cell lysates (5 ug per lane) were separated by SDS-PAGE and immunoblotted with anti-LIPG. Positive lysates [LY401821] (100ug) and [LC401821] (20ug) can be purchased separately from OriGene.



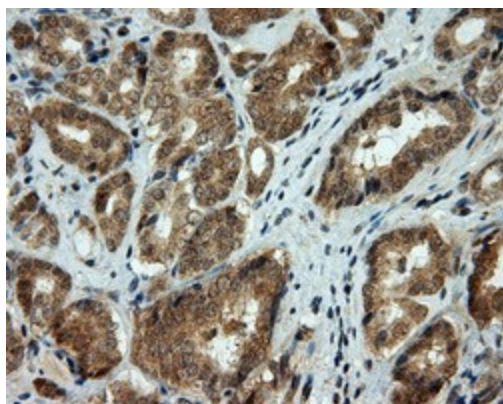
Immunohistochemical staining of paraffin-embedded Adenocarcinoma of Human colon tissue using anti-LIPG mouse monoclonal antibody. (Heat-induced epitope retrieval by 10mM citric buffer, pH6.0, 100°C for 10min, [TA501041])



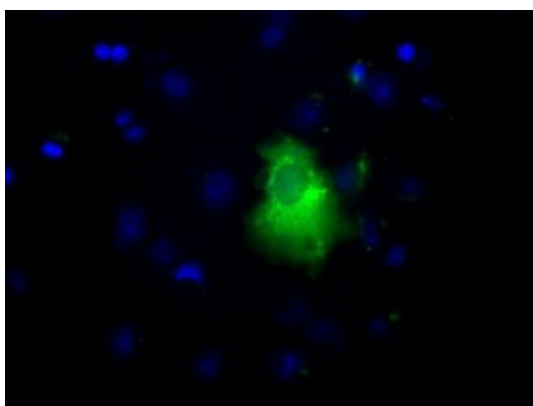
Immunohistochemical staining of paraffin-embedded Human Kidney tissue within the normal limits using anti-LIPG mouse monoclonal antibody. (Heat-induced epitope retrieval by 10mM citric buffer, pH6.0, 100°C for 10min, [TA501041])



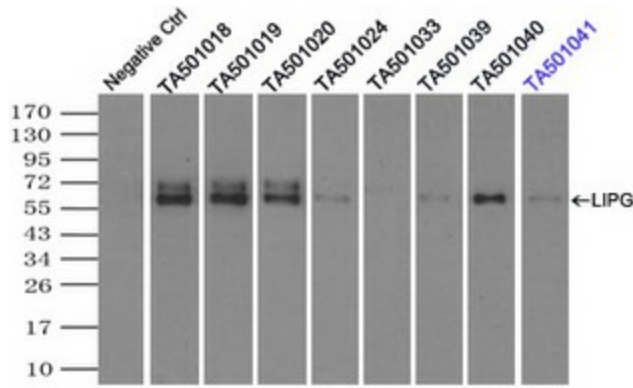
Immunohistochemical staining of paraffin-embedded Carcinoma of Human liver tissue using anti-LIPG mouse monoclonal antibody. (Heat-induced epitope retrieval by 10mM citric buffer, pH6.0, 100°C for 10min, [TA501041])



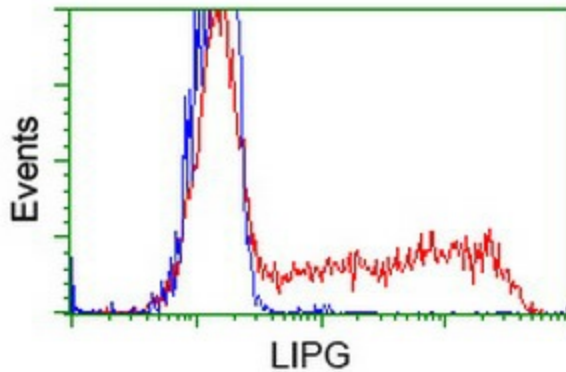
Immunohistochemical staining of paraffin-embedded Carcinoma of Human prostate tissue using anti-LIPG mouse monoclonal antibody. (Heat-induced epitope retrieval by 10mM citric buffer, pH6.0, 100°C for 10min, [TA501041])



Anti-LIPG mouse monoclonal antibody ([TA501041]) immunofluorescent staining of COS7 cells transiently transfected by pCMV6-ENTRY LIPG ([RC209248]).



Immunoprecipitation (IP) of LIPG by using TrueMab monoclonal anti-LIPG antibodies (Negative control: IP without adding anti-LIPG antibody.). For each experiment, 500ul of DDK tagged LIPG overexpression lysates (at 1:5 dilution with HEK293T lysate), 2ug of anti-LIPG antibody and 20ul (0.1mg) of goat anti-mouse conjugated magnetic beads were mixed and incubated overnight. After extensive wash to remove any non-specific binding, the immunoprecipitated products were analyzed with rabbit anti-DDK polyclonal antibody.



HEK293T cells transfected with either [RC209248] overexpress plasmid (Red) or empty vector control plasmid (Blue) were immunostained by anti-LIPG antibody ([TA501041]), and then analyzed by flow cytometry.