

## Product datasheet for **TA501034M**

### **NIT1 Mouse Monoclonal Antibody [Clone ID: OTI4D12]**

#### **Product data:**

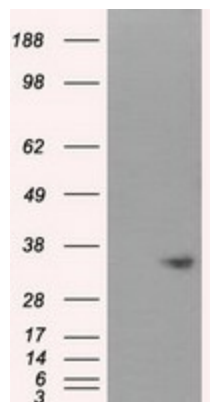
Product Type:	Primary Antibodies
Clone Name:	OTI4D12
Applications:	FC, IF, IHC, WB
Recommended Dilution:	WB 1:1000, IHC 1:50, IF 1:100, Flow 1:100
Reactivity:	Human, Mouse, Rat
Host:	Mouse
Isotype:	IgG1
Clonality:	Monoclonal
Immunogen:	Full length human recombinant protein of human NIT1 (NP_005591) produced in HEK293T cell.
Formulation:	PBS (pH 7.3) containing 1% BSA, 50% glycerol and 0.02% sodium azide.
Concentration:	0.66 mg/ml
Purification:	Purified from mouse ascites fluids or tissue culture supernatant by affinity chromatography (protein A/G)
Conjugation:	Unconjugated
Storage:	Store at -20°C as received.
Stability:	Stable for 12 months from date of receipt.
Predicted Protein Size:	35.7 kDa
Gene Name:	nitrilase 1
Database Link:	<a href="#">NP_005591</a> <a href="#">Entrez Gene 27045 Mouse</a> <a href="#">Entrez Gene 289222 Rat</a> <a href="#">Entrez Gene 4817 Human</a> <a href="#">Q86X76</a>
Background:	Play a role in cell growth and apoptosis: loss of expression promotes cell growth and resistance to DNA damage stress. Has tumor suppressor properties that enhances the apoptotic responsiveness in cancer cells; this effect is additive to the tumor suppressor activity of FHIT. it is also a negative regulator of primary T-cells. Has apparently no omega-amidase activity such as NIT2.



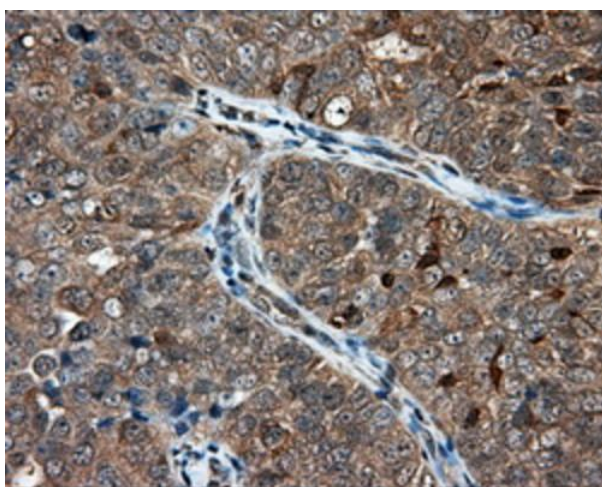
[View online »](#)

Synonyms: MGC57670

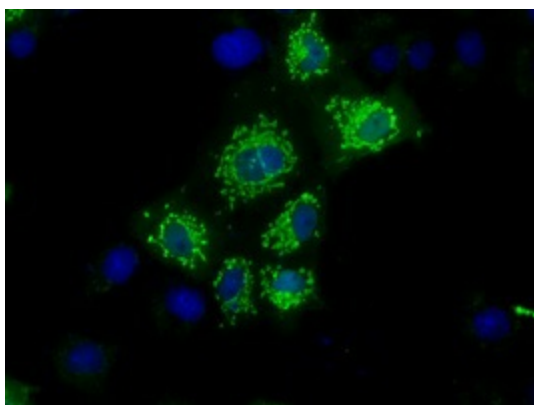
## Product images:



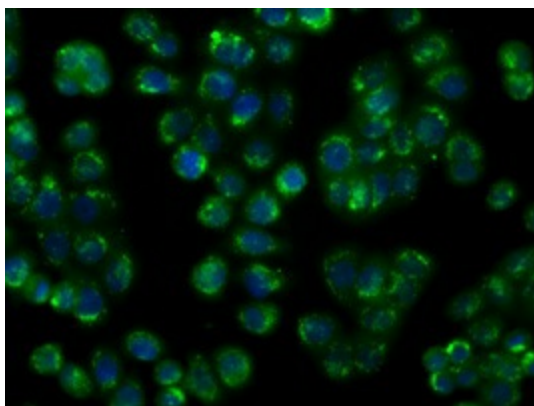
HEK293T cells were transfected with the pCMV6-ENTRY control (Left lane) or pCMV6-ENTRY NIT1 ([RC211519], Right lane) cDNA for 48 hrs and lysed. Equivalent amounts of cell lysates (5 ug per lane) were separated by SDS-PAGE and immunoblotted with anti-NIT1. Positive lysates [LY401717] (100ug) and [LC401717] (20ug) can be purchased separately from OriGene.



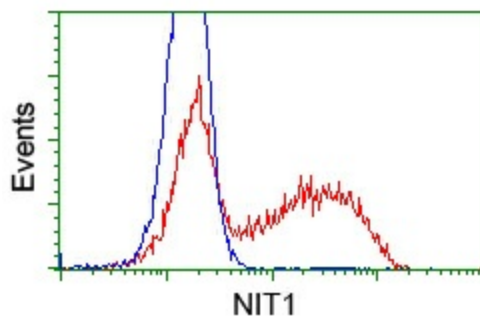
Immunohistochemical staining of paraffin-embedded Adenocarcinoma of ovary tissue using anti-NIT1 mouse monoclonal antibody. Heat-induced epitope retrieval by EDTA solution buffer pH 8.0 at 120°C for 3 min.



Anti-NIT1 mouse monoclonal antibody ([TA501034]) immunofluorescent staining of COS7 cells transiently transfected by pCMV6-ENTRY NIT1 ([RC211519]).



Immunofluorescent staining of HT29 cells using anti-NIT1 mouse monoclonal antibody ([TA501034]).



HEK293T cells transfected with either pCMV6-ENTRY NIT1 ([RC211519]) (Red) or empty vector control plasmid (Blue) were immunostained with anti-NIT1 mouse monoclonal ([TA501034]), and then analyzed by flow cytometry.