

## Product datasheet for **TA501034BM**

### **NIT1 Mouse Monoclonal Antibody (HRP conjugated) [Clone ID: OTI4D12]**

#### **Product data:**

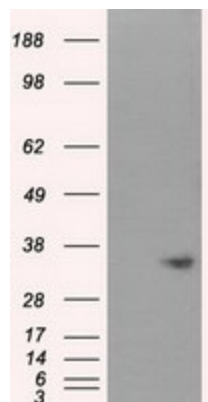
<b>Product Type:</b>	Primary Antibodies
<b>Clone Name:</b>	OTI4D12
<b>Applications:</b>	FC, IF, IHC, WB
<b>Recommended Dilution:</b>	WB 1:1000, IHC 1:50, IF 1:100, Flow 1:100
<b>Reactivity:</b>	Human, Mouse, Rat
<b>Host:</b>	Mouse
<b>Isotype:</b>	IgG1
<b>Clonality:</b>	Monoclonal
<b>Immunogen:</b>	Full length human recombinant protein of human NIT1 (NP_005591) produced in HEK293T cell.
<b>Formulation:</b>	PBS (pH 7.3) containing 1% BSA, 50% glycerol.
<b>Concentration:</b>	0.5 mg/ml
<b>Purification:</b>	Purified from mouse ascites fluids or tissue culture supernatant by affinity chromatography (protein A/G)
<b>Conjugation:</b>	HRP
<b>Storage:</b>	Store at -20°C as received.
<b>Stability:</b>	Stable for 12 months from date of receipt.
<b>Predicted Protein Size:</b>	35.7 kDa
<b>Gene Name:</b>	nitrilase 1
<b>Database Link:</b>	<a href="#">NP_005591</a> <a href="#">Entrez Gene 27045 Mouse</a> <a href="#">Entrez Gene 289222 Rat</a> <a href="#">Entrez Gene 4817 Human</a> <a href="#">Q86X76</a>
<b>Background:</b>	Play a role in cell growth and apoptosis; loss of expression promotes cell growth and resistance to DNA damage stress. Has tumor suppressor properties that enhances the apoptotic responsiveness in cancer cells; this effect is additive to the tumor suppressor activity of FHIT. It is also a negative regulator of primary T-cells. Has apparently no omega-amidase activity such as NIT2.



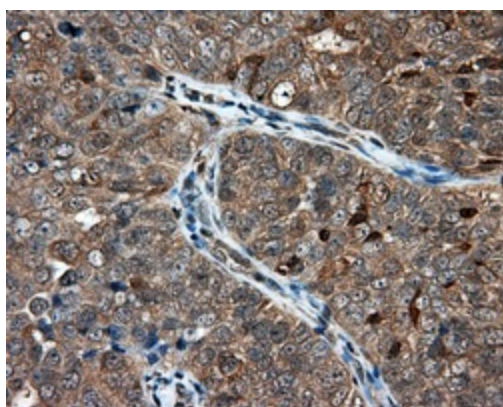
[View online »](#)

Synonyms: MGC57670

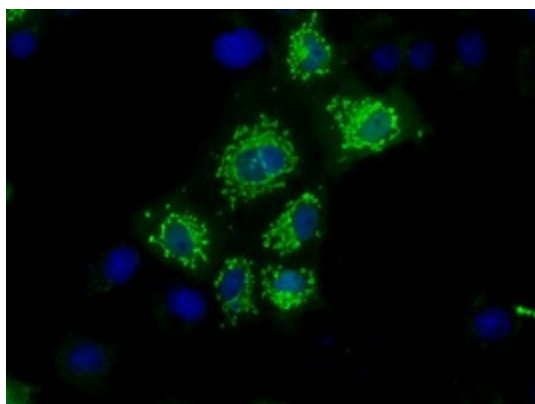
**Product images:**



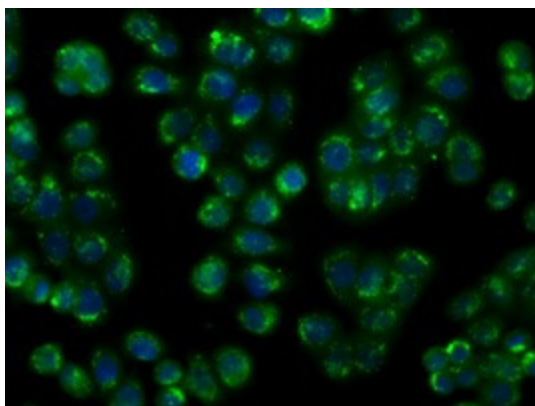
HEK293T cells were transfected with the pCMV6-ENTRY control (Left lane) or pCMV6-ENTRY NIT1 ([RC211519], Right lane) cDNA for 48 hrs and lysed. Equivalent amounts of cell lysates (5 ug per lane) were separated by SDS-PAGE and immunoblotted with anti-NIT1. Positive lysates [LY401717] (100ug) and [LC401717] (20ug) can be purchased separately from OriGene.



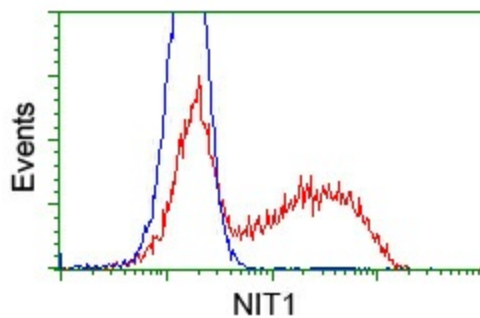
Immunohistochemical staining of paraffin-embedded Adenocarcinoma of ovary tissue using anti-NIT1 mouse monoclonal antibody. (Heat-induced epitope retrieval by 10mM citric buffer, pH6.0, 100°C for 10min, [TA501034], Dilution 1:50)



Anti-NIT1 mouse monoclonal antibody ([TA501034]) immunofluorescent staining of COS7 cells transiently transfected by pCMV6-ENTRY NIT1 ([RC211519]).



Immunofluorescent staining of HT29 cells using anti-NIT1 mouse monoclonal antibody ([TA501034]).



HEK293T cells transfected with either pCMV6-ENTRY NIT1 ([RC211519]) (Red) or empty vector control plasmid (Blue) were immunostained with anti-NIT1 mouse monoclonal ([TA501034]), and then analyzed by flow cytometry.