

## Product datasheet for **TA501034**

### **NIT1 Mouse Monoclonal Antibody [Clone ID: OTI4D12]**

#### **Product data:**

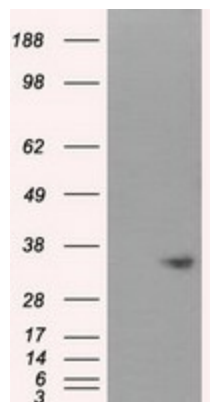
|                                |   |
|--------------------------------|---|
| <b>Product Type:</b>           | Primary Antibodies  |
| <b>Clone Name:</b>             | OTI4D12   |
| <b>Applications:</b>           | FC, IF, IHC, WB   |
| <b>Recommended Dilution:</b>   | WB 1:1000, IHC 1:50, IF 1:100, Flow 1:100   |
| <b>Reactivity:</b>             | Human, Mouse, Rat   |
| <b>Host:</b>                   | Mouse   |
| <b>Isotype:</b>                | IgG1  |
| <b>Clonality:</b>              | Monoclonal  |
| <b>Immunogen:</b>              | Full length human recombinant protein of human NIT1 (NP_005591) produced in HEK293T cell.   |
| <b>Formulation:</b>            | PBS (pH 7.3) containing 1% BSA, 50% glycerol and 0.02% sodium azide.  |
| <b>Concentration:</b>          | 0.66 mg/ml  |
| <b>Purification:</b>           | Purified from mouse ascites fluids or tissue culture supernatant by affinity chromatography (protein A/G)   |
| <b>Conjugation:</b>            | Unconjugated  |
| <b>Storage:</b>                | Store at -20°C as received.   |
| <b>Stability:</b>              | Stable for 12 months from date of receipt.  |
| <b>Predicted Protein Size:</b> | 35.7 kDa  |
| <b>Gene Name:</b>              | nitrilase 1   |
| <b>Database Link:</b>          | <a href="#">NP_005591</a><br><a href="#">Entrez Gene 27045 Mouse</a> <a href="#">Entrez Gene 289222 Rat</a> <a href="#">Entrez Gene 4817 Human</a><br><a href="#">Q86X76</a>  |
| <b>Background:</b>             | Play a role in cell growth and apoptosis; loss of expression promotes cell growth and resistance to DNA damage stress. Has tumor suppressor properties that enhances the apoptotic responsiveness in cancer cells; this effect is additive to the tumor suppressor activity of FHIT. It is also a negative regulator of primary T-cells. Has apparently no omega-amidase activity such as NIT2. |



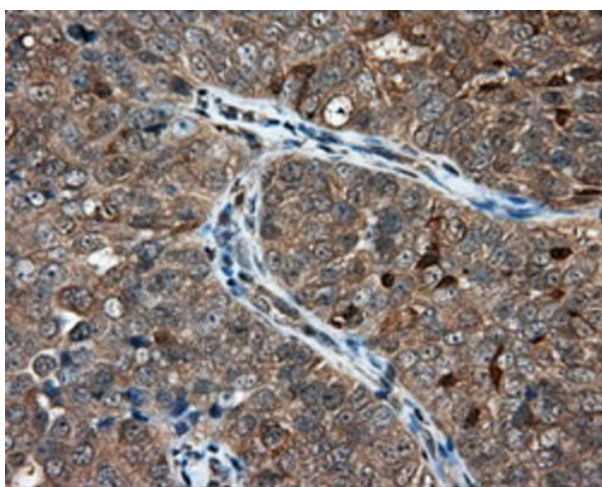
[View online »](#)

Synonyms: MGC57670

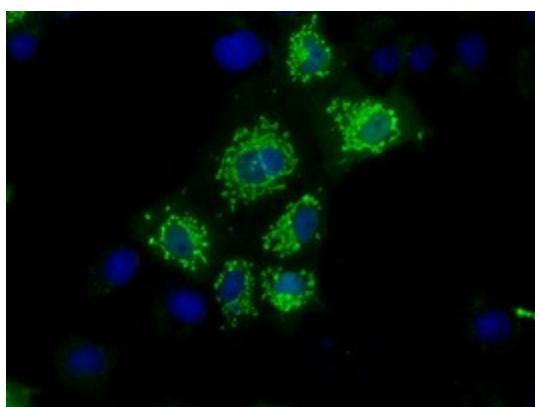
### Product images:



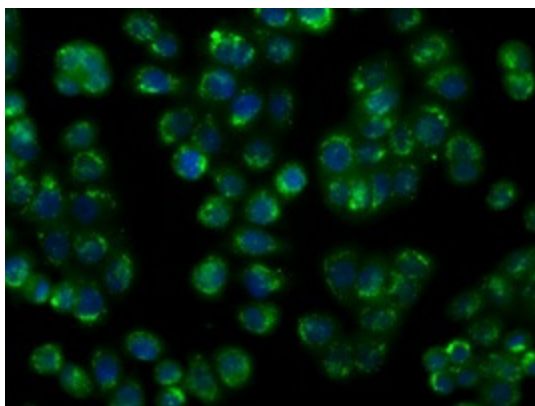
HEK293T cells were transfected with the pCMV6-ENTRY control (Left lane) or pCMV6-ENTRY NIT1 ([RC211519], Right lane) cDNA for 48 hrs and lysed. Equivalent amounts of cell lysates (5 ug per lane) were separated by SDS-PAGE and immunoblotted with anti-NIT1. Positive lysates [LY401717] (100ug) and [LC401717] (20ug) can be purchased separately from OriGene.



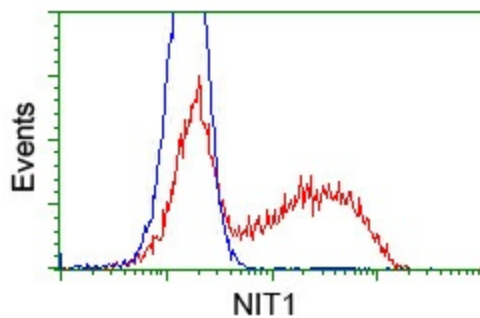
Immunohistochemical staining of paraffin-embedded Adenocarcinoma of ovary tissue using anti-NIT1 mouse monoclonal antibody. Heat-induced epitope retrieval by EDTA solution buffer pH 8.0 at 120°C for 3 min.



Anti-NIT1 mouse monoclonal antibody (TA501034) immunofluorescent staining of COS7 cells transiently transfected by pCMV6-ENTRY NIT1 ([RC211519]).



Immunofluorescent staining of HT29 cells using anti-NIT1 mouse monoclonal antibody (TA501034).



HEK293T cells transfected with either pCMV6-ENTRY NIT1 ([RC211519]) (Red) or empty vector control plasmid (Blue) were immunostained with anti-NIT1 mouse monoclonal (TA501034), and then analyzed by flow cytometry.