

Product datasheet for **TA501025BM**

PTP epsilon (PTPRE) Mouse Monoclonal Antibody (HRP conjugated) [Clone ID: OTI2C11]

Product data:

Product Type:	Primary Antibodies
Clone Name:	OTI2C11
Applications:	FC, IF, WB
Recommended Dilution:	WB 1:500, IF 1:100, Flow 1:100
Reactivity:	Human, Mouse, Rat
Host:	Mouse
Isotype:	IgG1
Clonality:	Monoclonal
Immunogen:	Full length human recombinant protein of human PTPRE (NP_006495) produced in HEK293T cell.
Formulation:	PBS (pH 7.3) containing 1% BSA, 50% glycerol.
Concentration:	0.5 mg/ml
Purification:	Purified from mouse ascites fluids or tissue culture supernatant by affinity chromatography (protein A/G)
Conjugation:	HRP
Storage:	Store at -20°C as received.
Stability:	Stable for 12 months from date of receipt.
Predicted Protein Size:	80.6 kDa
Gene Name:	protein tyrosine phosphatase receptor type E
Database Link:	NP_006495 Entrez Gene 19267 Mouse Entrez Gene 114767 Rat Entrez Gene 5791 Human P23469



[View online »](#)

Background:

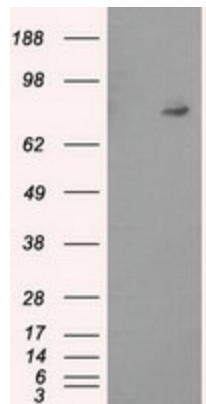
The protein encoded by this gene is a member of the protein tyrosine phosphatase (PTP) family. PTPs are known to be signaling molecules that regulate a variety of cellular processes including cell growth, differentiation, mitotic cycle, and oncogenic transformation. Two alternatively spliced transcript variants of this gene have been reported, one of which encodes a receptor-type PTP that possesses a short extracellular domain, a single transmembrane region, and two tandem intracytoplasmic catalytic domains; Another one encodes a PTP that contains a distinct hydrophilic N-terminus, and thus represents a nonreceptor-type isoform of this PTP. Studies of the similar gene in mice suggested the regulatory roles of this PTP in RAS related signal transduction pathways, cytokines induced SATA signaling, as well as the activation of voltage-gated K⁺ channels.

Synonyms:

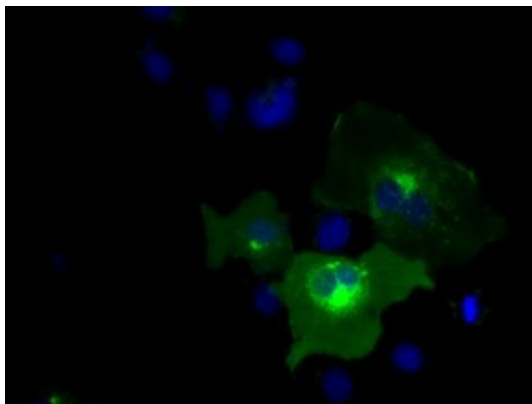
HPTPE; PTPE; R-PTP-EPSILON

Protein Families:

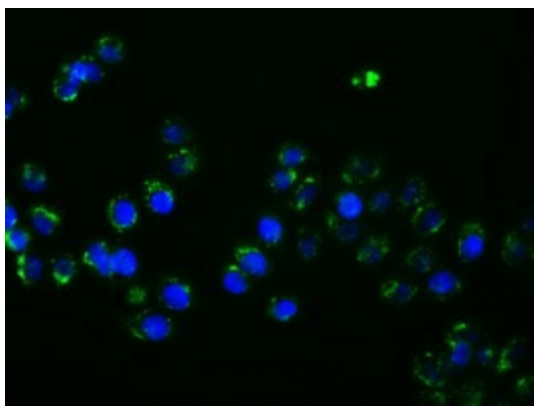
Druggable Genome, Phosphatase, Transmembrane

Product images:

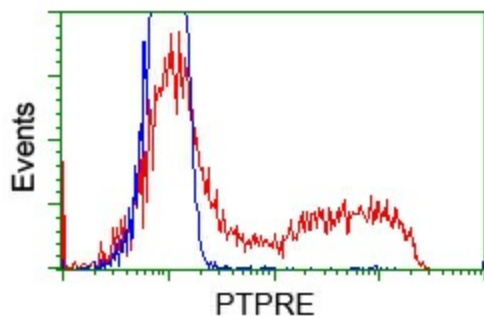
HEK293T cells were transfected with the pCMV6-ENTRY control (Left lane) or pCMV6-ENTRY PTPRE ([RC207950], Right lane) cDNA for 48 hrs and lysed. Equivalent amounts of cell lysates (5 ug per lane) were separated by SDS-PAGE and immunoblotted with anti-PTPRE. Positive lysates [LY401950] (100ug) and [LC401950] (20ug) can be purchased separately from OriGene.



Anti-PTPRE mouse monoclonal antibody ([TA501025]) immunofluorescent staining of COS7 cells transiently transfected by pCMV6-ENTRY PTPRE ([RC207950]).



Immunofluorescent staining of HT29 cells using anti-PTPRE mouse monoclonal antibody ([TA501025]).



HEK293T cells transfected with either pCMV6-ENTRY PTPRE ([RC207950]) (Red) or empty vector control plasmid (Blue) were immunostained with anti-PTPRE mouse monoclonal ([TA501025]), and then analyzed by flow cytometry.