

Product datasheet for **TA501021S**

Natriuretic Peptide Receptor C (NPR3) Mouse Monoclonal Antibody [Clone ID: OTI4C3]

Product data:

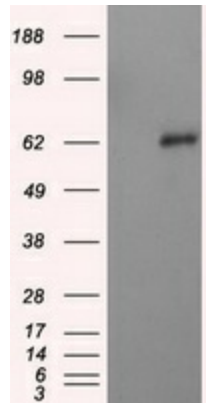
Product Type:	Primary Antibodies
Clone Name:	OTI4C3
Applications:	FC, IF, IHC, WB
Recommended Dilution:	WB 1:2000, IHC 1:50, IF 1:100, Flow 1:100
Reactivity:	Human, Mouse, Rat
Host:	Mouse
Isotype:	IgG2b
Clonality:	Monoclonal
Immunogen:	Full length human recombinant protein of human NPR3 (NP_000899) produced in HEK293T cell.
Formulation:	PBS (pH 7.3) containing 1% BSA, 50% glycerol and 0.02% sodium azide.
Concentration:	0.75 mg/ml
Purification:	Purified from mouse ascites fluids or tissue culture supernatant by affinity chromatography (protein A/G)
Conjugation:	Unconjugated
Storage:	Store at -20°C as received.
Stability:	Stable for 12 months from date of receipt.
Predicted Protein Size:	59.8 kDa
Gene Name:	natriuretic peptide receptor 3
Database Link:	NP_000899 Entrez Gene 18162 Mouse Entrez Gene 25339 Rat Entrez Gene 4883 Human P17342
Background:	The family of natriuretic peptides (see MIM 108780) elicit a number of vascular, renal, and endocrine effects that are important in the maintenance of blood pressure and extracellular fluid volume. These effects are mediated by specific binding of the peptides to cell surface receptors in the vasculature, kidney, adrenal, and brain
Synonyms:	ANP-C; ANPR-C; ANPRC; C5orf23; GUCY2B; NPR-C; NPRC



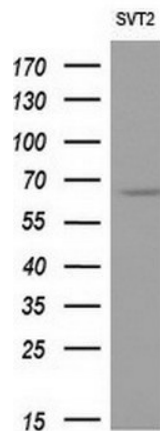
[View online »](#)

Protein Families: Druggable Genome, Transmembrane

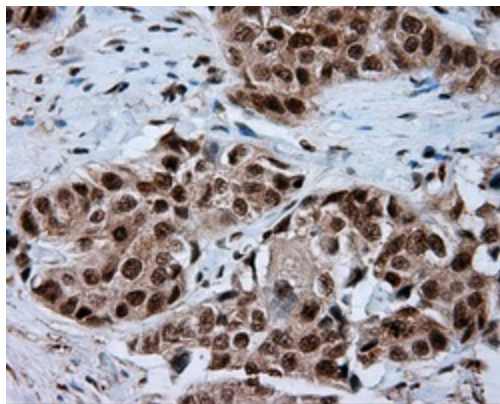
Product images:



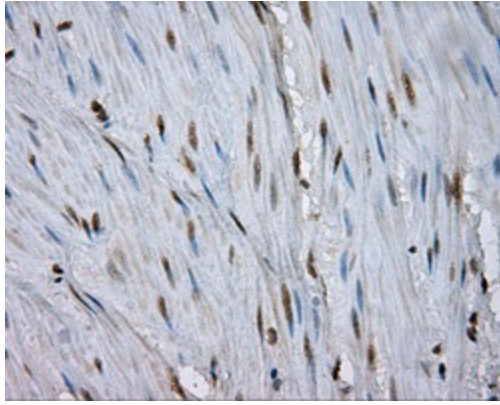
HEK293T cells were transfected with the pCMV6-ENTRY control (Left lane) or pCMV6-ENTRY NPR3 ([RC219453], Right lane) cDNA for 48 hrs and lysed. Equivalent amounts of cell lysates (5 ug per lane) were separated by SDS-PAGE and immunoblotted with anti-NPR3. Positive lysates [LY424462] (100ug) and [LC424462] (20ug) can be purchased separately from OriGene.



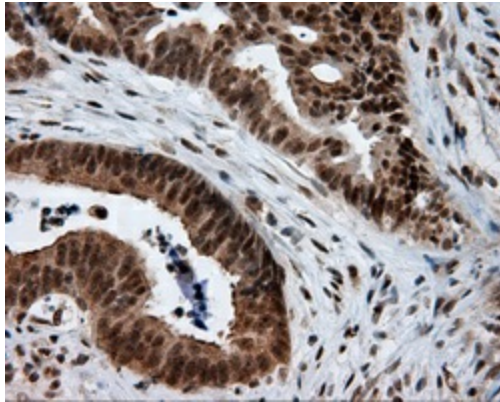
Western blot analysis of extracts (10ug) from 1 cell line by using anti-NPR3 monoclonal antibody at 1:200 dilution.



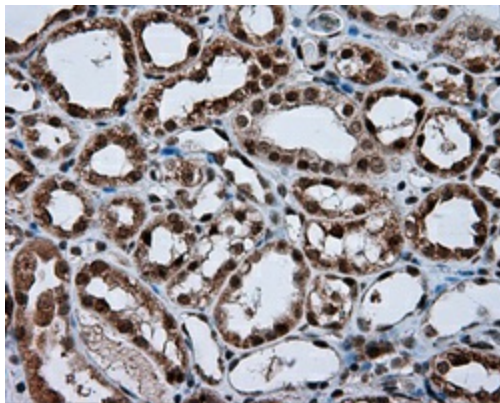
Immunohistochemical staining of paraffin-embedded Adenocarcinoma of breast tissue using anti-NPR3 mouse monoclonal antibody. (Heat-induced epitope retrieval by 10mM citric buffer, pH6.0, 100°C for 10min, [TA501021], Dilution 1:50)



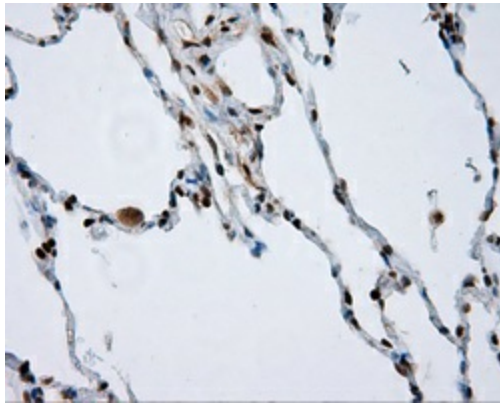
Immunohistochemical staining of paraffin-embedded colon tissue within the normal limits using anti-NPR3 mouse monoclonal antibody. (Heat-induced epitope retrieval by 10mM citric buffer, pH6.0, 100°C for 10min, [TA501021], Dilution 1:50)



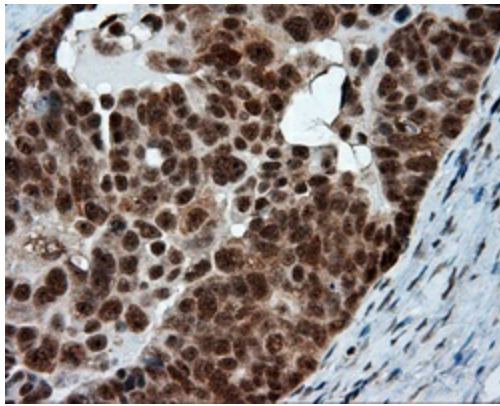
Immunohistochemical staining of paraffin-embedded Adenocarcinoma of colon tissue using anti-NPR3 mouse monoclonal antibody. (Heat-induced epitope retrieval by 10mM citric buffer, pH6.0, 100°C for 10min, [TA501021], Dilution 1:50)



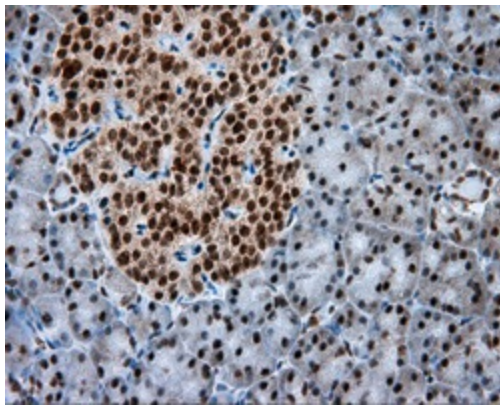
Immunohistochemical staining of paraffin-embedded Kidney tissue within the normal limits using anti-NPR3 mouse monoclonal antibody. (Heat-induced epitope retrieval by 10mM citric buffer, pH6.0, 100°C for 10min, [TA501021], Dilution 1:50)



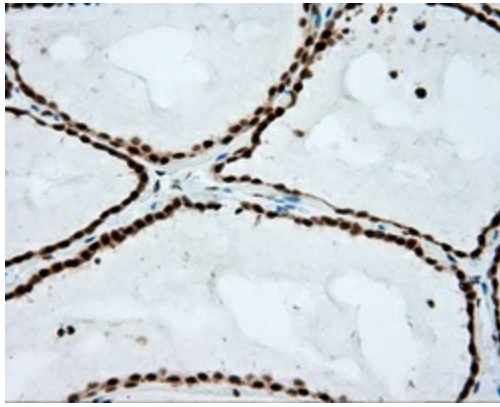
Immunohistochemical staining of paraffin-embedded lung tissue within the normal limits using anti-NPR3 mouse monoclonal antibody. (Heat-induced epitope retrieval by 10mM citric buffer, pH6.0, 100°C for 10min, [TA501021], Dilution 1:50)



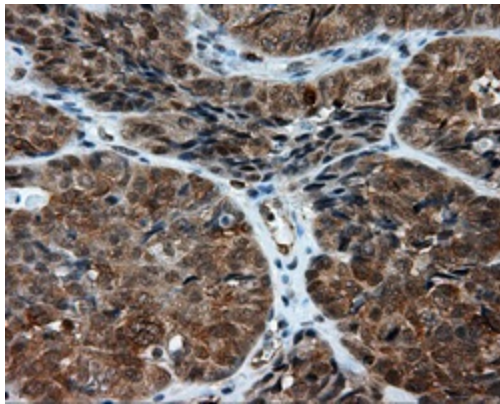
Immunohistochemical staining of paraffin-embedded Adenocarcinoma of ovary tissue using anti-NPR3 mouse monoclonal antibody. (Heat-induced epitope retrieval by 10mM citric buffer, pH6.0, 100°C for 10min, [TA501021], Dilution 1:50)



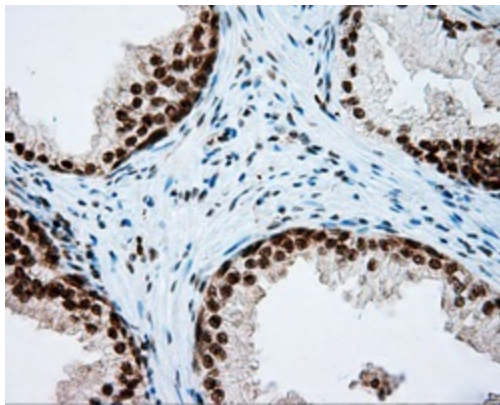
Immunohistochemical staining of paraffin-embedded pancreas tissue within the normal limits using anti-NPR3 mouse monoclonal antibody. (Heat-induced epitope retrieval by 10mM citric buffer, pH6.0, 100°C for 10min, [TA501021], Dilution 1:50)



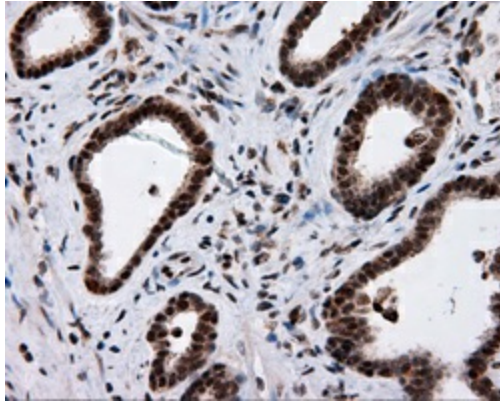
Immunohistochemical staining of paraffin-embedded thyroid tissue within the normal limits using anti-NPR3 mouse monoclonal antibody. (Heat-induced epitope retrieval by 10mM citric buffer, pH6.0, 100°C for 10min, [TA501021], Dilution 1:50)



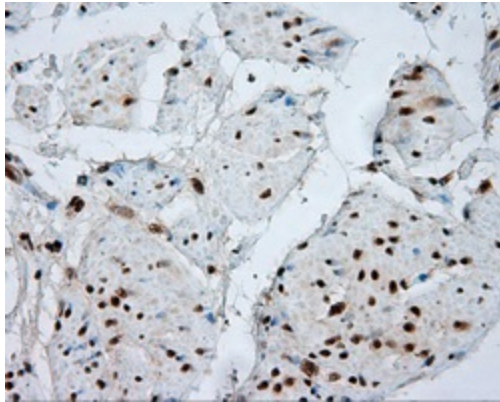
Immunohistochemical staining of paraffin-embedded Adenocarcinoma of endometrium tissue using anti-NPR3 mouse monoclonal antibody. (Heat-induced epitope retrieval by 10mM citric buffer, pH6.0, 100°C for 10min, [TA501021], Dilution 1:50)



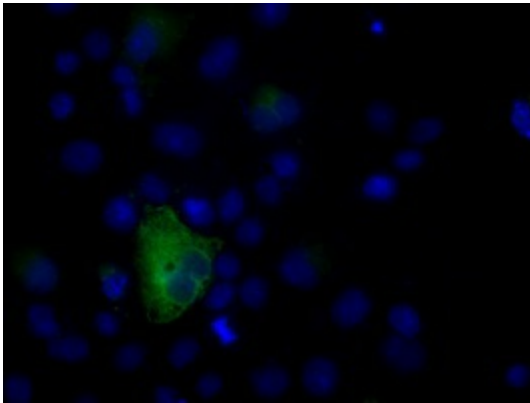
Immunohistochemical staining of paraffin-embedded prostate tissue within the normal limits using anti-NPR3 mouse monoclonal antibody. (Heat-induced epitope retrieval by 10mM citric buffer, pH6.0, 100°C for 10min, [TA501021], Dilution 1:50)



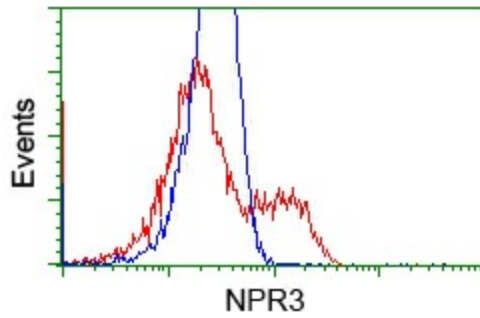
Immunohistochemical staining of paraffin-embedded Carcinoma of prostate tissue using anti-NPR3 mouse monoclonal antibody. (Heat-induced epitope retrieval by 10mM citric buffer, pH6.0, 100°C for 10min, [TA501021], Dilution 1:50)



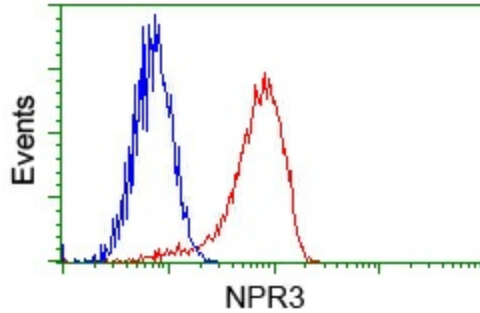
Immunohistochemical staining of paraffin-embedded bladder tissue within the normal limits using anti-NPR3 mouse monoclonal antibody. (Heat-induced epitope retrieval by 10mM citric buffer, pH6.0, 100°C for 10min, [TA501021], Dilution 1:50)



Immunofluorescent staining of SVT2 cells using anti-NPR3 mouse monoclonal antibody (Cat# [TA501021]).



HEK293T cells transfected with either pCMV6-ENTRY NPR3 ([RC219453]) (Red) or empty vector control plasmid (Blue) were immunostained with anti-NPR3 mouse monoclonal ([TA501021]), and then analyzed by flow cytometry.



Flow cytometric analysis of Jurkat cells, using anti-NPR3 antibody ([TA501021]), (Red) compared to a nonspecific negative control antibody (TA50011) (Blue).