

## Product datasheet for **TA501009BM**

### **TUBA8 Mouse Monoclonal Antibody (HRP conjugated) [Clone ID: OTI3E10]**

#### **Product data:**

Product Type:	Primary Antibodies
Clone Name:	OTI3E10
Applications:	FC, IF, IHC, WB
Recommended Dilution:	WB 1:2000, IHC 1:50, IF 1:100
Reactivity:	Human, Mouse, Rat
Host:	Mouse
Isotype:	IgG2a
Clonality:	Monoclonal
Immunogen:	Full length human recombinant protein of human TUBA8(NP_061816) produced in HEK293T cell.
Formulation:	PBS (pH 7.3) containing 1% BSA, 50% glycerol.
Concentration:	0.5 mg/ml
Purification:	Purified from mouse ascites fluids or tissue culture supernatant by affinity chromatography (protein A/G)
Conjugation:	HRP
Storage:	Store at -20°C as received.
Stability:	Stable for 12 months from date of receipt.
Predicted Protein Size:	50.1 kDa
Gene Name:	tubulin alpha 8
Database Link:	<a href="#">NP_061816</a> <a href="#">Entrez Gene 500377 Rat</a> <a href="#">Entrez Gene 51807 Human</a> <a href="#">Q9NY65</a>



[View online »](#)

**Background:**

Microtubules are cylindrical tubes of 20-25 nm in diameter. They are composed of protofilaments which are in turn composed of alpha- and beta-tubulin polymers. Each microtubule is polarized, at one end alpha-subunits are exposed (-) and at the other beta-subunits are exposed (+). Microtubules act as a scaffold to determine cell shape, and provide a backbone for cell organelles and vesicles to move on, a process that requires motor proteins. The major microtubule motor proteins are kinesin, which generally moves towards the (+) end of the microtubule, and dynein, which generally moves towards the (-) end. Microtubules also form the spindle fibers for separating chromosomes during mitosis.

**Synonyms:**

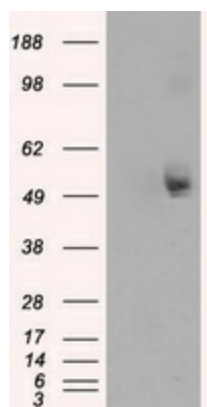
TUBAL2

**Protein Families:**

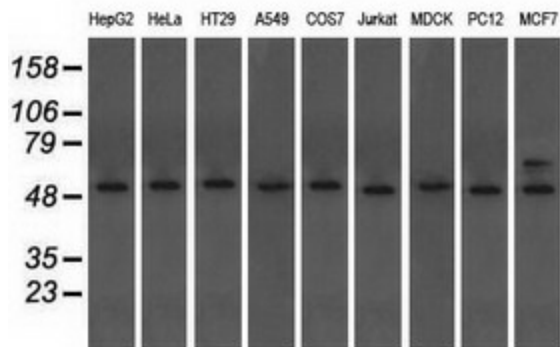
Druggable Genome

**Protein Pathways:**

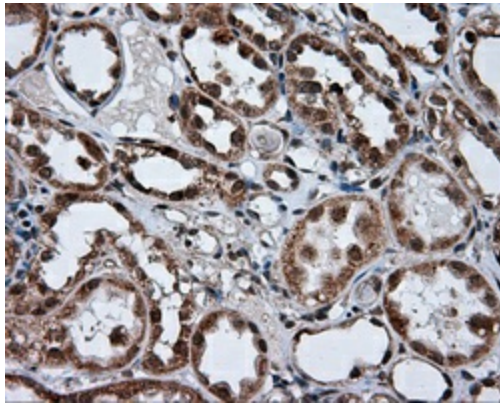
Gap junction, Pathogenic Escherichia coli infection

**Product images:**


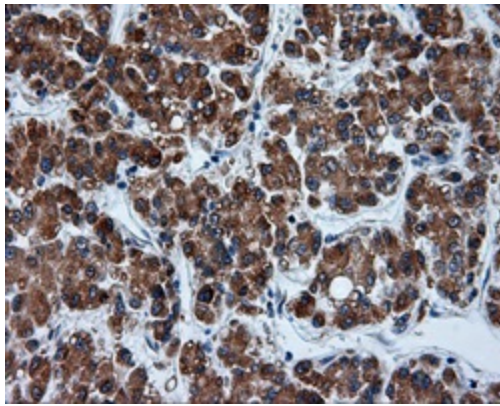
HEK293T cells were transfected with the pCMV6-ENTRY control (Left lane) or pCMV6-ENTRY TUBA8 ([RC211175], Right lane) cDNA for 48 hrs and lysed. Equivalent amounts of cell lysates (5 ug per lane) were separated by SDS-PAGE and immunoblotted with anti-TUBA8. Positive lysates [LY412867] (100ug) and [LC412867] (20ug) can be purchased separately from OriGene.



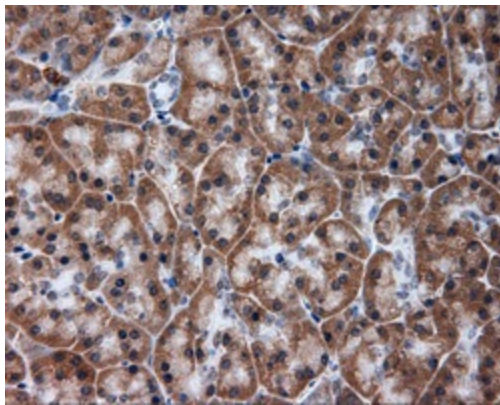
Western blot analysis of extracts (35ug) from 9 different cell lines by using anti-TUBA8 monoclonal antibody (HepG2: human; HeLa: human; SVT2: mouse; A549: human; COS7: monkey; Jurkat: human; MDCK: canine; PC12: rat; MCF7: human).



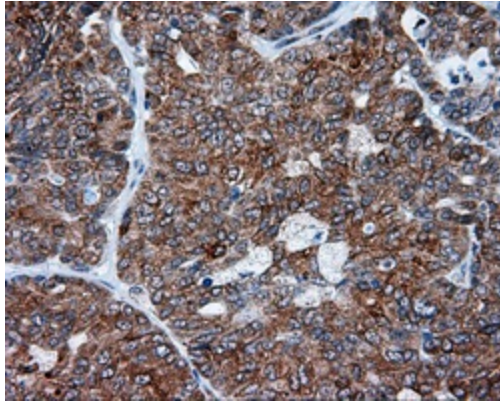
Immunohistochemical staining of paraffin-embedded Kidney tissue within the normal limits using anti-TUBA8 mouse monoclonal antibody. (Heat-induced epitope retrieval by 10mM citric buffer, pH6.0, 100°C for 10min, [TA501009], Dilution 1:50)



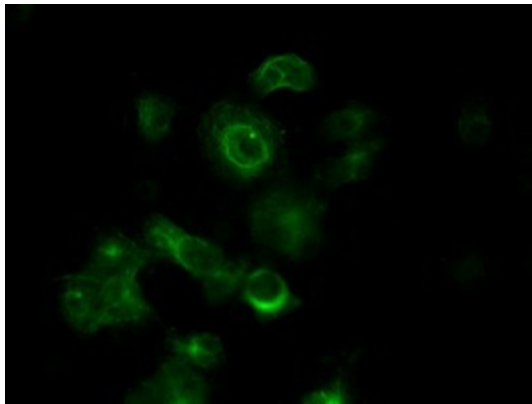
Immunohistochemical staining of paraffin-embedded Carcinoma of liver tissue using anti-TUBA8 mouse monoclonal antibody. (Heat-induced epitope retrieval by 10mM citric buffer, pH6.0, 100°C for 10min, [TA501009], Dilution 1:50)



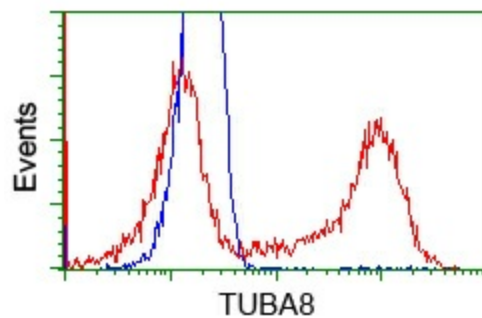
Immunohistochemical staining of paraffin-embedded pancreas tissue within the normal limits using anti-TUBA8 mouse monoclonal antibody. (Heat-induced epitope retrieval by 10mM citric buffer, pH6.0, 100°C for 10min, [TA501009], Dilution 1:50)



Immunohistochemical staining of paraffin-embedded Adenocarcinoma of endometrium tissue using anti-TUBA8 mouse monoclonal antibody. (Heat-induced epitope retrieval by 10mM citric buffer, pH6.0, 100°C for 10min, [TA501009], Dilution 1:50)



Anti-TUBA8 mouse monoclonal antibody ([TA501009]) immunofluorescent staining of COS7 cells transiently transfected by pCMV6-ENTRY TUBA8 ([RC211175]).



HEK293T cells transfected with either pCMV6-ENTRY TUBA8 ([RC211175]) (Red) or empty vector control plasmid (Blue) were immunostained with anti-TUBA8 mouse monoclonal ([TA501009]), and then analyzed by flow cytometry.