

Product datasheet for **TA501008M**

MEAK7 (TLDC1) Mouse Monoclonal Antibody [Clone ID: OTI3C4]

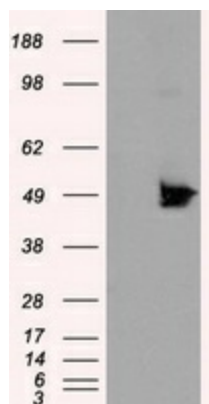
Product data:

Product Type:	Primary Antibodies
Clone Name:	OTI3C4
Applications:	IF, IHC, WB
Recommended Dilution:	WB 1:2000, IHC 1:50, IF 1:100
Reactivity:	Human
Host:	Mouse
Isotype:	IgG2a
Clonality:	Monoclonal
Immunogen:	Full length human recombinant protein of human KIAA1609 (NP_065998) produced in HEK293T cell.
Formulation:	PBS (pH 7.3) containing 1% BSA, 50% glycerol and 0.02% sodium azide.
Concentration:	0.89 mg/ml
Purification:	Purified from mouse ascites fluids or tissue culture supernatant by affinity chromatography (protein A/G)
Conjugation:	Unconjugated
Storage:	Store at -20°C as received.
Stability:	Stable for 12 months from date of receipt.
Predicted Protein Size:	51.0 kDa
Gene Name:	MTOR associated protein, eak-7 homolog
Database Link:	NP_065998 Entrez Gene 57707 Human Q6P9B6
Synonyms:	KIAA1609

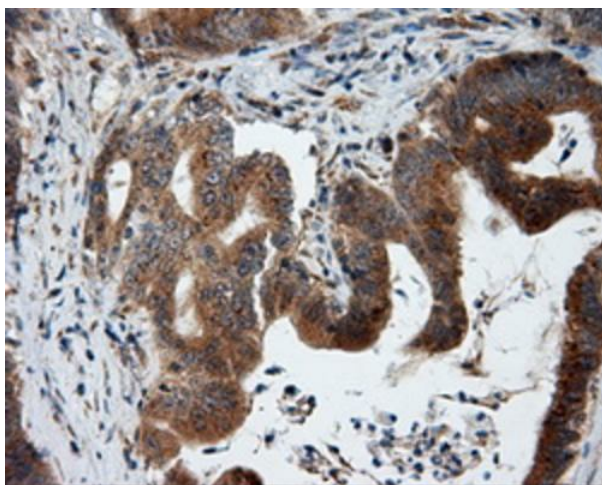


[View online »](#)

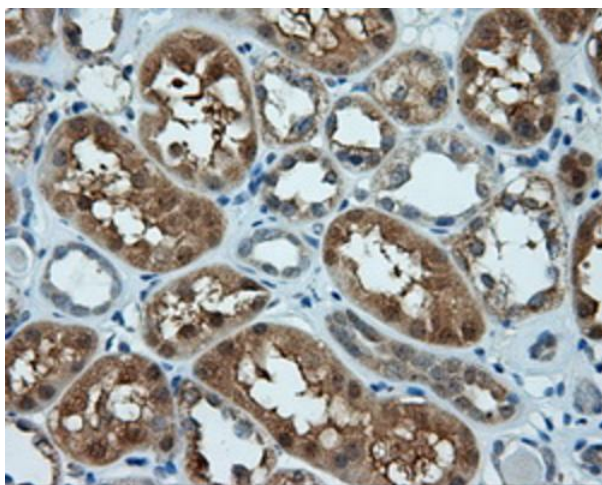
Product images:



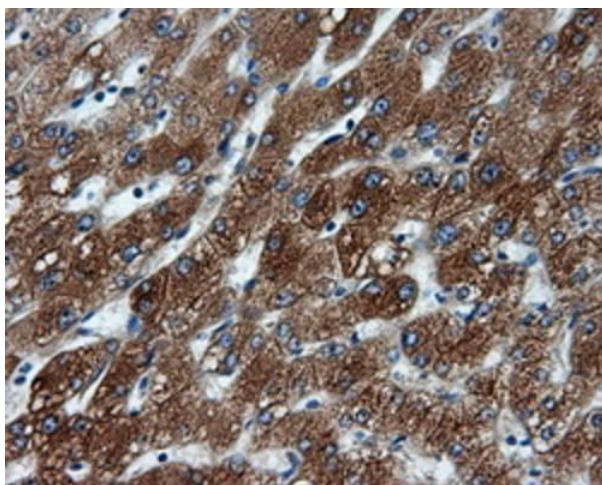
HEK293T cells were transfected with the pCMV6-ENTRY control (Left lane) or pCMV6-ENTRY KIAA1609 ([RC209287], Right lane) cDNA for 48 hrs and lysed. Equivalent amounts of cell lysates (5 ug per lane) were separated by SDS-PAGE and immunoblotted with anti-KIAA1609. Positive lysates [LY402813] (100ug) and [LC402813] (20ug) can be purchased separately from OriGene.



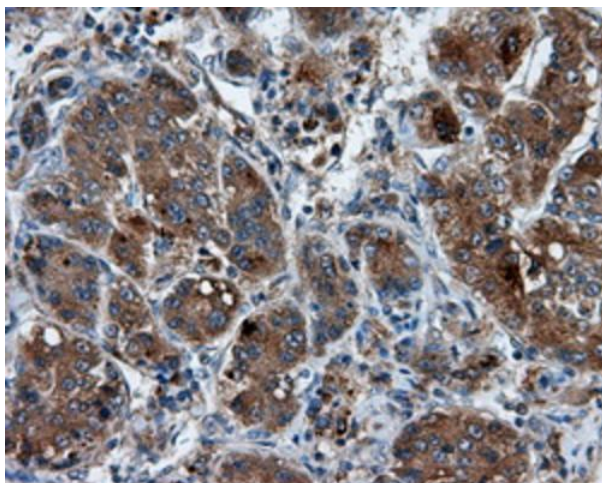
Immunohistochemical staining of paraffin-embedded Adenocarcinoma of colon tissue using anti-KIAA1609 mouse monoclonal antibody. Heat-induced epitope retrieval by EDTA solution buffer pH 8.0 at 120°C for 3 min.



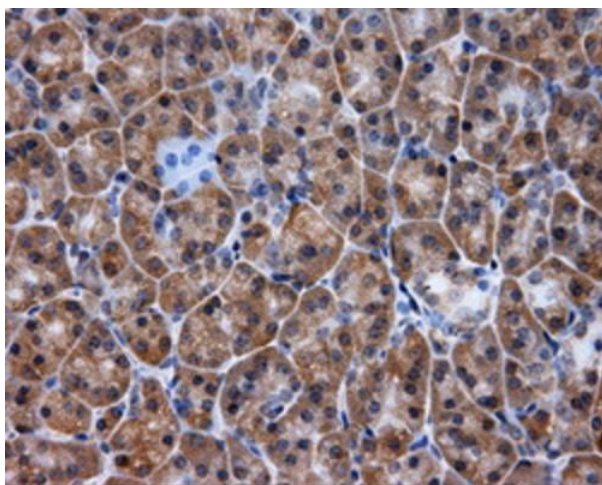
Immunohistochemical staining of paraffin-embedded Kidney tissue within the normal limits using anti-KIAA1609 mouse monoclonal antibody. Heat-induced epitope retrieval by EDTA solution buffer pH 8.0 at 120°C for 3 min.



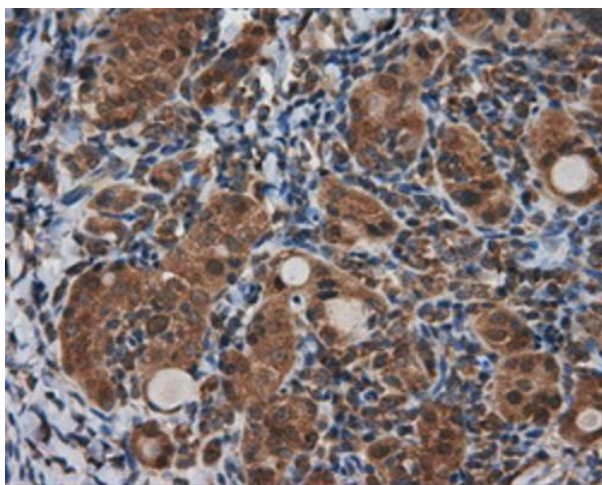
Immunohistochemical staining of paraffin-embedded liver tissue within the normal limits using anti-KIAA1609 mouse monoclonal antibody. Heat-induced epitope retrieval by EDTA solution buffer pH 8.0 at 120°C for 3 min.



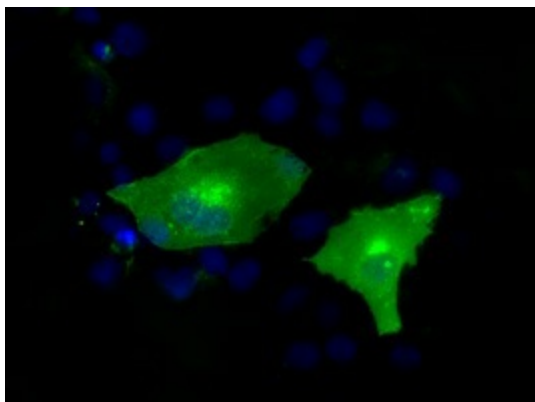
Immunohistochemical staining of paraffin-embedded Carcinoma of liver tissue using anti-KIAA1609 mouse monoclonal antibody. Heat-induced epitope retrieval by EDTA solution buffer pH 8.0 at 120°C for 3 min.



Immunohistochemical staining of paraffin-embedded pancreas tissue within the normal limits using anti-KIAA1609 mouse monoclonal antibody. Heat-induced epitope retrieval by EDTA solution buffer pH 8.0 at 120°C for 3 min.



Immunohistochemical staining of paraffin-embedded Carcinoma of thyroid tissue using anti-KIAA1609 mouse monoclonal antibody. Heat-induced epitope retrieval by EDTA solution buffer pH 8.0 at 120°C for 3 min.



Anti-KIAA1609 mouse monoclonal antibody ([TA501008]) immunofluorescent staining of COS7 cells transiently transfected by pCMV6-ENTRY KIAA1609 ([RC209287]).