

Product datasheet for **TA501005**

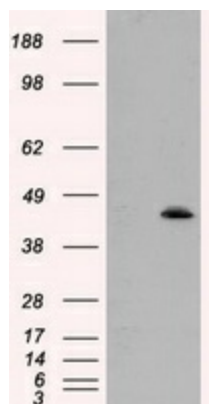
MTRF1L Mouse Monoclonal Antibody [Clone ID: OTI1E3]

Product data:

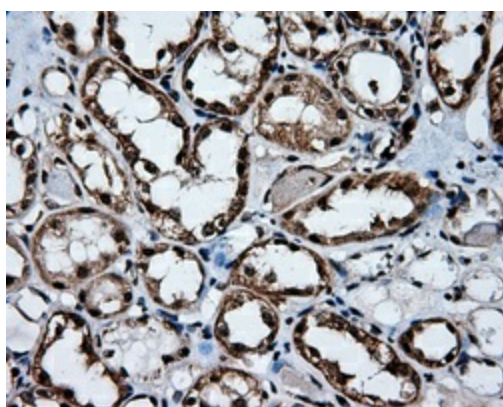
Product Type:	Primary Antibodies
Clone Name:	OTI1E3
Applications:	FC, IF, IHC, WB
Recommended Dilution:	WB 1:2000, IHC 1:50, IF 1:100, Flow 1:100
Reactivity:	Human
Host:	Mouse
Isotype:	IgG1
Clonality:	Monoclonal
Immunogen:	Full length human recombinant protein of human MTRF1L (NP_061914) produced in HEK293T cell.
Formulation:	PBS (pH 7.3) containing 1% BSA, 50% glycerol and 0.02% sodium azide.
Concentration:	0.69 mg/ml
Purification:	Purified from mouse ascites fluids or tissue culture supernatant by affinity chromatography (protein A/G)
Conjugation:	Unconjugated
Storage:	Store at -20°C as received.
Stability:	Stable for 12 months from date of receipt.
Predicted Protein Size:	43.6 kDa
Gene Name:	mitochondrial translation release factor 1 like
Database Link:	NP_061914 Entrez Gene 54516 Human Q9UGC7
Background:	Mitochondrial peptide chain release factor that directs the termination of translation in response to the peptide chain termination codons UAA and UAG
Synonyms:	HMRF1L; MRF1L; mtRF1a



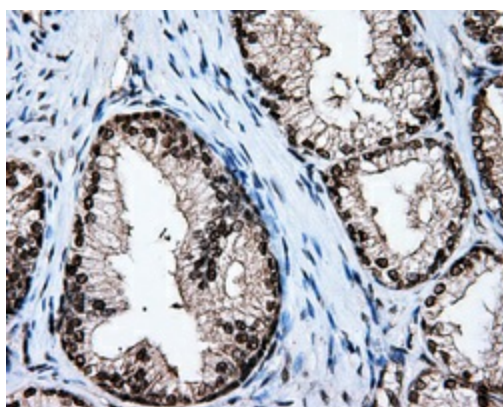
[View online »](#)

Product images:


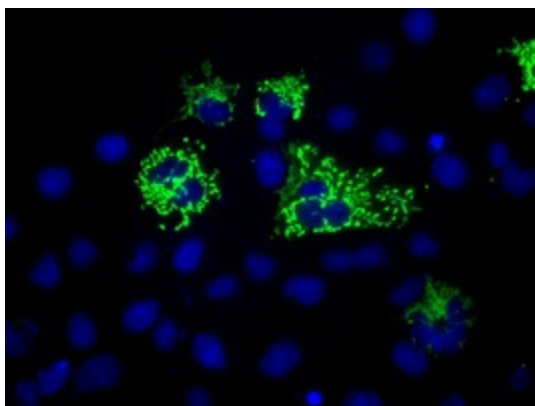
HEK293T cells were transfected with the pCMV6-ENTRY control (Left lane) or pCMV6-ENTRY MTRF1L ([RC204221], Right lane) cDNA for 48 hrs and lysed. Equivalent amounts of cell lysates (5 ug per lane) were separated by SDS-PAGE and immunoblotted with anti-MTRF1L. Positive lysates [LY402734] (100ug) and [LC402734] (20ug) can be purchased separately from OriGene.



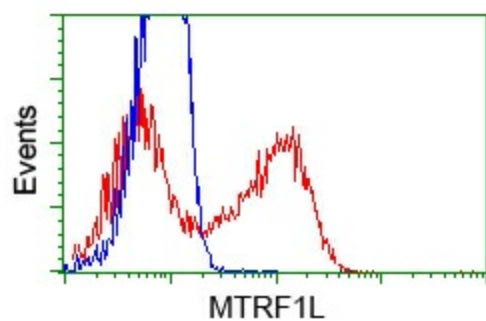
Immunohistochemical staining of paraffin-embedded Kidney tissue within the normal limits using anti-MTRF1L mouse monoclonal antibody. (Heat-induced epitope retrieval by 10mM citric buffer, pH6.0, 100°C for 10min, TA501005, Dilution 1:50)



Immunohistochemical staining of paraffin-embedded prostate tissue within the normal limits using anti-MTRF1L mouse monoclonal antibody. (Heat-induced epitope retrieval by 10mM citric buffer, pH6.0, 100°C for 10min, TA501005, Dilution 1:50)



Anti-MTRF1L mouse monoclonal antibody (TA501005) immunofluorescent staining of COS7 cells transiently transfected by pCMV6-ENTRY MTRF1L ([RC204221]).



HEK293T cells transfected with either pCMV6-ENTRY MTRF1L ([RC204221]) (Red) or empty vector control plasmid (Blue) were immunostained with anti-MTRF1L mouse monoclonal (TA501005), and then analyzed by flow cytometry.