

## Product datasheet for **TA500996M**

### SIL1 Mouse Monoclonal Antibody [Clone ID: OTI1G7]

#### Product data:

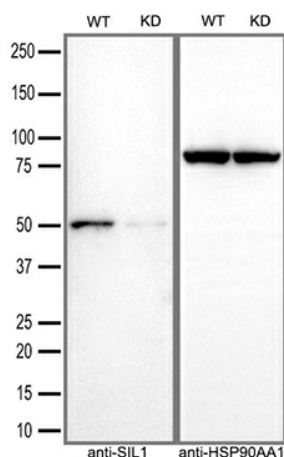
Product Type:	Primary Antibodies
Clone Name:	OTI1G7
Applications:	FC, IF, IHC, WB
Recommended Dilution:	WB 1:2000, IHC 1:50, IF 1:100, Flow 1:100
Reactivity:	Human, Mouse, Rat
Host:	Mouse
Isotype:	IgG1
Clonality:	Monoclonal
Immunogen:	Full length human recombinant protein of human SIL1 (NP_071909) produced in HEK293T cell.
Formulation:	PBS (pH 7.3) containing 1% BSA, 50% glycerol and 0.02% sodium azide.
Concentration:	0.59 mg/ml
Purification:	Purified from mouse ascites fluids or tissue culture supernatant by affinity chromatography (protein A/G)
Conjugation:	Unconjugated
Storage:	Store at -20°C as received.
Stability:	Stable for 12 months from date of receipt.
Predicted Protein Size:	52.1 kDa
Gene Name:	SIL1 nucleotide exchange factor
Database Link:	<a href="#">NP_071909</a> <a href="#">Entrez Gene 291673 Rat</a> <a href="#">Entrez Gene 64374 Human</a> <a href="#">Q9H173</a>
Background:	This gene encodes a resident endoplasmic reticulum (ER), N-linked glycoprotein with an N-terminal ER targeting sequence, 2 putative N-glycosylation sites, and a C-terminal ER retention signal. This protein functions as a nucleotide exchange factor for another unfolded protein response protein. Mutations in this gene have been associated with Marinesco-Sjogren syndrome. Alternate transcriptional splice variants have been characterized.


[View online »](#)

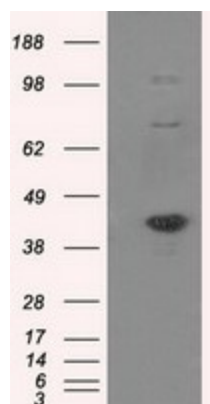
**Synonyms:** BAP; MSS; ULG5

**Protein Families:** Protease, Secreted Protein, Transmembrane

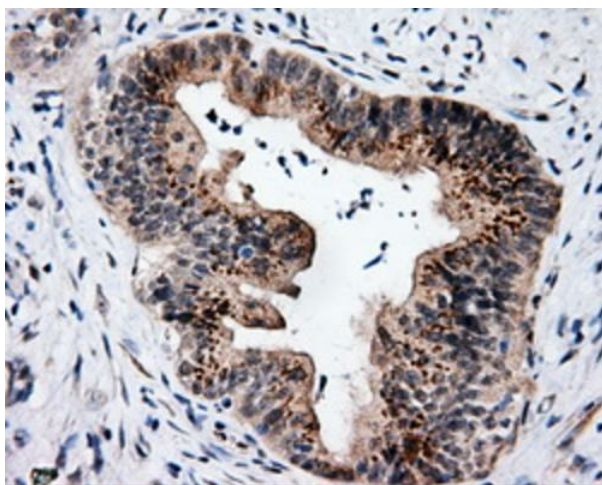
### Product images:



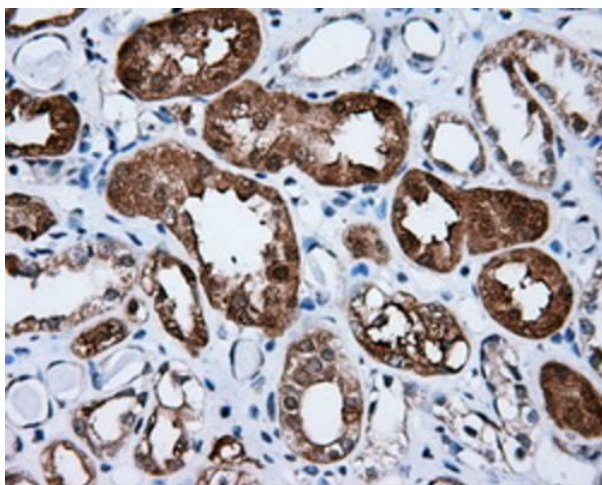
Equivalent amounts of cell lysates (30 ug per lane) of wild-type HeLa cells(WT) and SIL1-Knockdown HeLa cells(KD) were separated by SDS-PAGE and immunoblotted with anti-SIL1 monoclonal antibody [TA500996](1:1000). Then the blotted membrane was stripped and reprobed with anti-HSP90AA1 antibody as a loading control.



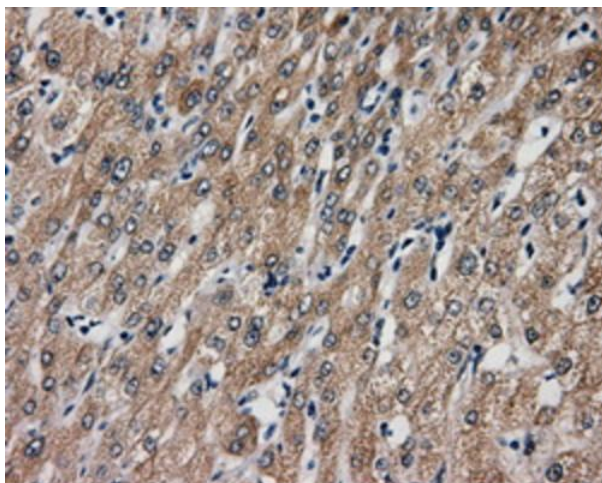
HEK293T cells were transfected with the pCMV6-ENTRY control (Left lane) or pCMV6-ENTRY SIL1 ([RC211850], Right lane) cDNA for 48 hrs and lysed. Equivalent amounts of cell lysates (5 ug per lane) were separated by SDS-PAGE and immunoblotted with anti-SIL1. Positive lysates [LY402924] (100ug) and [LC402924] (20ug) can be purchased separately from OriGene.



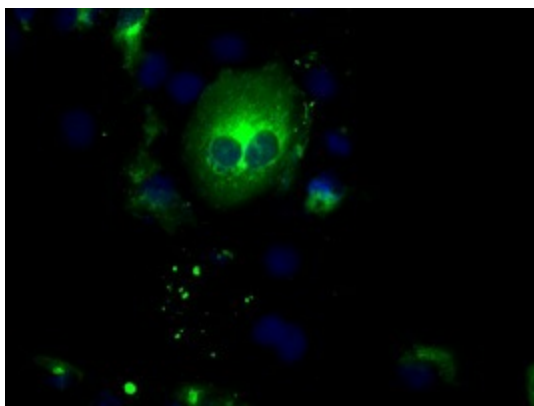
Immunohistochemical staining of paraffin-embedded Adenocarcinoma of colon tissue using anti-SIL1 mouse monoclonal antibody. Heat-induced epitope retrieval by EDTA solution buffer pH 8.0 at 120°C for 3 min.



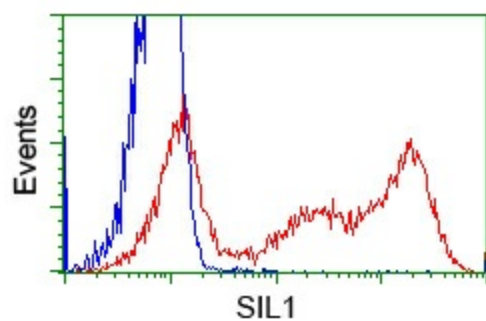
Immunohistochemical staining of paraffin-embedded Kidney tissue within the normal limits using anti-SIL1 mouse monoclonal antibody. Heat-induced epitope retrieval by EDTA solution buffer pH 8.0 at 120°C for 3 min.



Immunohistochemical staining of paraffin-embedded liver tissue within the normal limits using anti-SIL1 mouse monoclonal antibody. Heat-induced epitope retrieval by EDTA solution buffer pH 8.0 at 120°C for 3 min.



Anti-SIL1 mouse monoclonal antibody ([TA500996]) immunofluorescent staining of COS7 cells transiently transfected by pCMV6-ENTRY SIL1 ([RC211850]).



HEK293T cells transfected with either pCMV6-ENTRY SIL1 ([RC211850]) (Red) or empty vector control plasmid (Blue) were immunostained with anti-SIL1 mouse monoclonal ([TA500996]), and then analyzed by flow cytometry.