

Product datasheet for **TA500990BM**

MCL1 Mouse Monoclonal Antibody (HRP conjugated) [Clone ID: OTI10D10]

Product data:

Product Type:	Primary Antibodies
Clone Name:	OTI10D10
Applications:	FC, IF, WB
Recommended Dilution:	WB 1:2000, IF 1:100, Flow 1:100
Reactivity:	Human
Host:	Mouse
Isotype:	IgG2a
Clonality:	Monoclonal
Immunogen:	Full length human recombinant protein of human MCL1 (NP_068779) produced in HEK293T cell.
Formulation:	PBS (pH 7.3) containing 1% BSA, 50% glycerol.
Concentration:	0.5 mg/ml
Purification:	Purified from mouse ascites fluids or tissue culture supernatant by affinity chromatography (protein A/G)
Conjugation:	HRP
Storage:	Store at -20°C as received.
Stability:	Stable for 12 months from date of receipt.
Predicted Protein Size:	37.3 kDa
Gene Name:	MCL1 apoptosis regulator, BCL2 family member
Database Link:	NP_068779 Entrez Gene 4170 Human Q07820
Background:	The protein encoded by this gene belongs to the Bcl-2 family. Alternative splicing occurs at this locus and two transcript variants encoding distinct isoforms have been identified. The longer gene product (isoform 1) enhances cell survival by inhibiting apoptosis while the alternatively spliced shorter gene product (isoform 2) promotes apoptosis and is death-inducing.

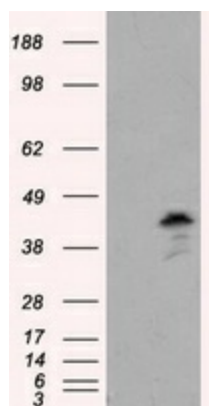


[View online »](#)

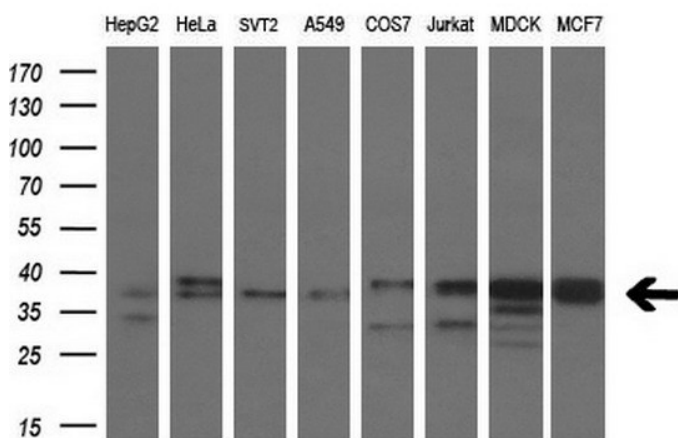
Synonyms: bcl2-L-3; BCL2L3; EAT; Mcl-1; MCL1-ES; mcl1/EAT; MCL1L; MCL1S; TM

Protein Families: Druggable Genome, Transmembrane

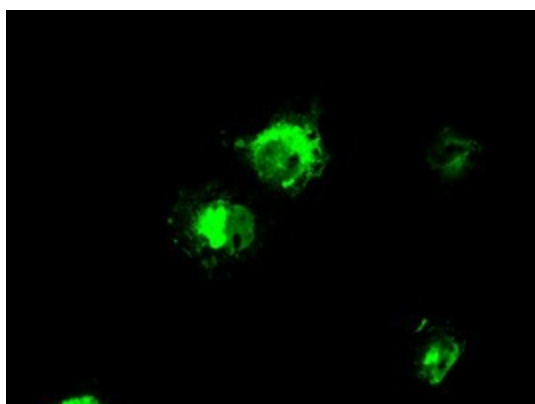
Product images:



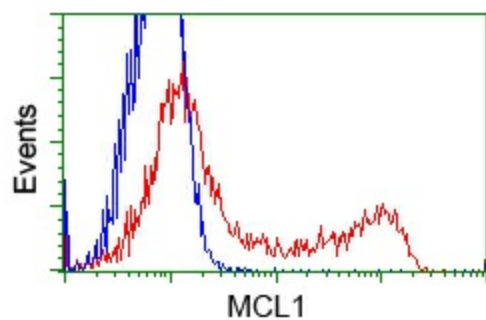
HEK293T cells were transfected with the pCMV6-ENTRY control (Left lane) or pCMV6-ENTRY MCL1 ([RC200521], Right lane) cDNA for 48 hrs and lysed. Equivalent amounts of cell lysates (5 ug per lane) were separated by SDS-PAGE and immunoblotted with anti-MCL1. Positive lysates [LY411855] (100ug) and [LC411855] (20ug) can be purchased separately from OriGene.



Western blot analysis of extracts (10ug) from 8 different cell lines by using anti-MCL1 monoclonal antibody at 1:200 dilution.



Anti-MCL1 mouse monoclonal antibody ([TA500990]) immunofluorescent staining of COS7 cells transiently transfected by pCMV6-ENTRY MCL1 ([RC200521]).



HEK293T cells transfected with either pCMV6-ENTRY MCL1 ([RC200521]) (Red) or empty vector control plasmid (Blue) were immunostained with anti-MCL1 mouse monoclonal ([TA500990]), and then analyzed by flow cytometry.