

## Product datasheet for **TA500986**

### MCL1 Mouse Monoclonal Antibody [Clone ID: OTI2E11]

#### Product data:

Product Type:	Primary Antibodies
Clone Name:	OTI2E11
Applications:	FC, IF, WB
Recommended Dilution:	WB 1:2000, IF 1:100, Flow 1:100
Reactivity:	Human
Host:	Mouse
Isotype:	IgG2a
Clonality:	Monoclonal
Immunogen:	Full length human recombinant protein of human MCL1 (NP_068779) produced in HEK293T cell.
Formulation:	PBS (pH 7.3) containing 1% BSA, 50% glycerol and 0.02% sodium azide.
Concentration:	1 mg/ml
Purification:	Purified from mouse ascites fluids or tissue culture supernatant by affinity chromatography (protein A/G)
Conjugation:	Unconjugated
Storage:	Store at -20°C as received.
Stability:	Stable for 12 months from date of receipt.
Predicted Protein Size:	37.3 kDa
Gene Name:	MCL1 apoptosis regulator, BCL2 family member
Database Link:	<a href="#">NP_068779</a> <a href="#">Entrez Gene 4170 Human</a> <a href="#">Q07820</a>
Background:	The protein encoded by this gene belongs to the Bcl-2 family. Alternative splicing occurs at this locus and two transcript variants encoding distinct isoforms have been identified. The longer gene product (isoform 1) enhances cell survival by inhibiting apoptosis while the alternatively spliced shorter gene product (isoform 2) promotes apoptosis and is death-inducing.

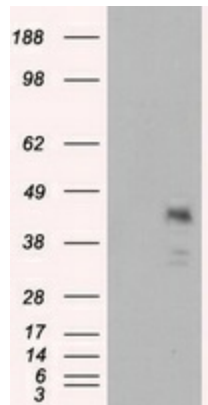


[View online »](#)

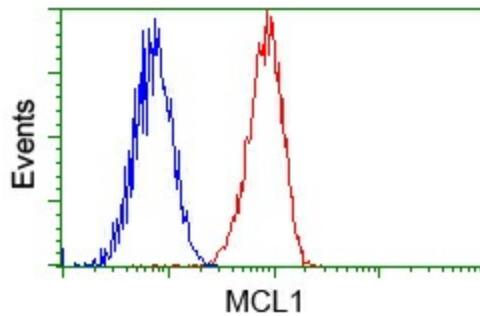
**Synonyms:** bcl2-L-3; BCL2L3; EAT; Mcl-1; MCL1-ES; mcl1/EAT; MCL1L; MCL1S; TM

**Protein Families:** Druggable Genome, Transmembrane

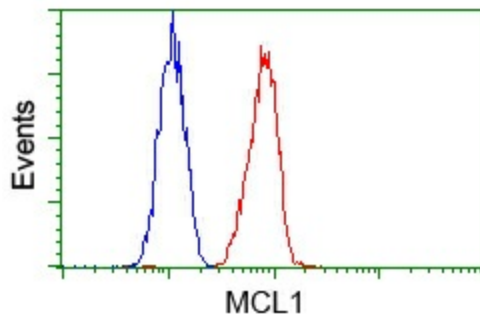
**Product images:**



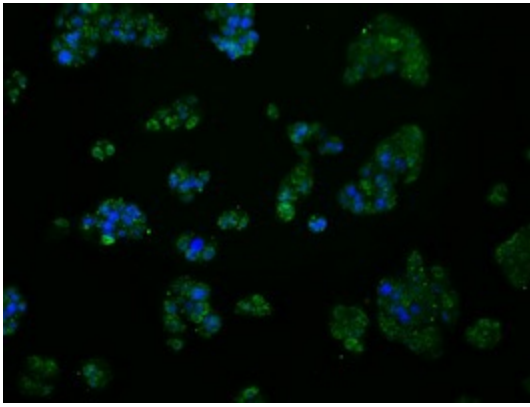
HEK293T cells were transfected with the pCMV6-ENTRY control (Cat# [PS100001], Left lane) or pCMV6-ENTRY MCL1 (Cat# [RC200521], Right lane) cDNA for 48 hrs and lysed. Equivalent amounts of cell lysates (5 ug per lane) were separated by SDS-PAGE and immunoblotted with anti-MCL1 (Cat# TA500986). Positive lysates [LY411855] (100ug) and [LC411855] (20ug) can be purchased separately from OriGene.



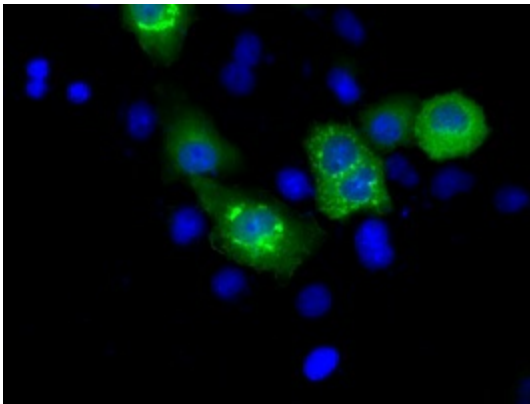
Flow cytometric analysis of Jurkat cells, using anti-MCL1 antibody (TA500986), (Red) compared to a nonspecific negative control antibody (TA50011) (Blue).



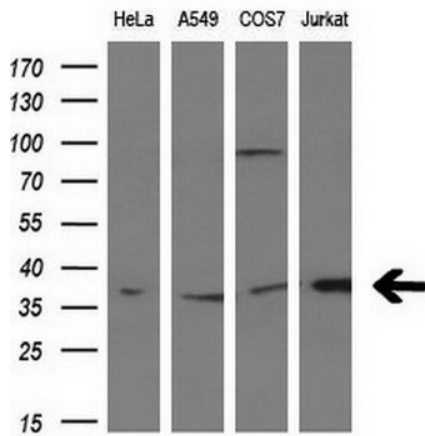
Flow cytometric analysis of HeLa cells, using anti-MCL1 antibody (TA500986), (Red) compared to a nonspecific negative control antibody (TA50011) (Blue).



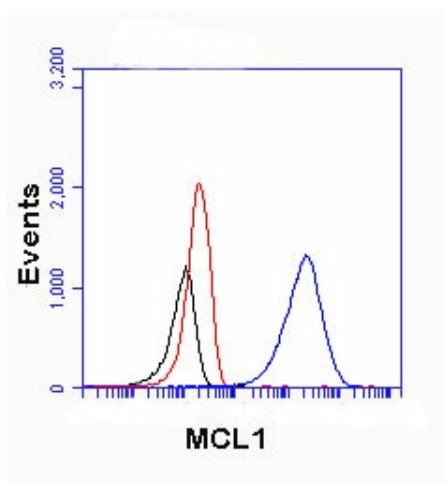
Immunofluorescent staining of HepG2 cells using anti-MCL1 mouse monoclonal antibody (TA500986).



Anti-MCL1 mouse monoclonal antibody (TA500986) immunofluorescent staining of COS7 cells transiently transfected by pCMV6-ENTRY MCL1 ([RC200521]).



Western blot analysis of extracts (10ug) from 4 different cell lines by using anti-MCL1 monoclonal antibody at 1:200 dilution.



Flow cytometric analysis of HEK293T cells (black), stained with anti-MCL1 antibody (TA500986) (Blue) or Isotype IgG control antibody (Red).