

Product datasheet for **TA500979BM**

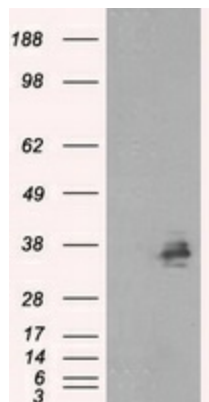
FAHD2A Mouse Monoclonal Antibody (HRP conjugated) [Clone ID: OTI5G1]

Product data:

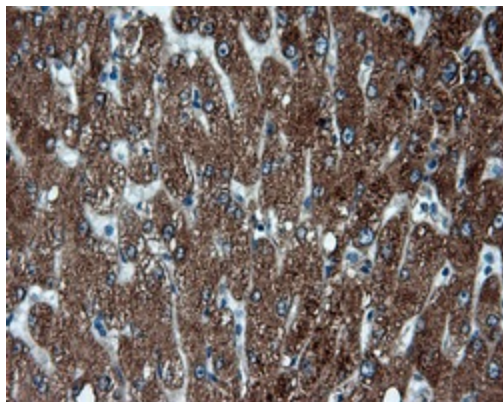
| | |
|-------------------------|---|
| Product Type: | Primary Antibodies |
| Clone Name: | OTI5G1 |
| Applications: | IF, IHC, WB |
| Recommended Dilution: | WB 1:1000, IHC 1:50, IF 1:100 |
| Reactivity: | Human |
| Host: | Mouse |
| Isotype: | IgG2b |
| Clonality: | Monoclonal |
| Immunogen: | Full length human recombinant protein of human FAHD2A (NP_057128) produced in HEK293T cell. |
| Formulation: | PBS (pH 7.3) containing 1% BSA, 50% glycerol. |
| Concentration: | 0.5 mg/ml |
| Purification: | Purified from mouse ascites fluids or tissue culture supernatant by affinity chromatography (protein A/G) |
| Conjugation: | HRP |
| Storage: | Store at -20°C as received. |
| Stability: | Stable for 12 months from date of receipt. |
| Predicted Protein Size: | 34.6 kDa |
| Gene Name: | fumarylacetoacetate hydrolase domain containing 2A |
| Database Link: | NP_057128 Entrez Gene 51011 Human Q96GK7 |
| Background: | May have hydrolase activity |
| Synonyms: | CGI-105 |



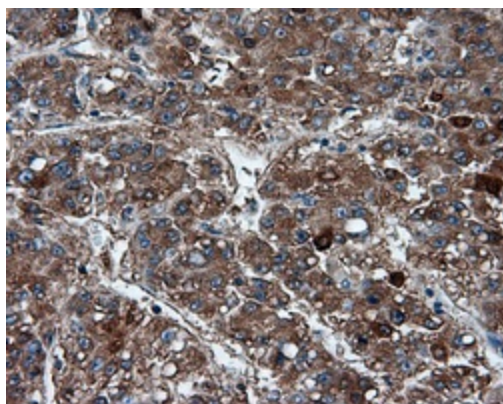
[View online »](#)

Product images:

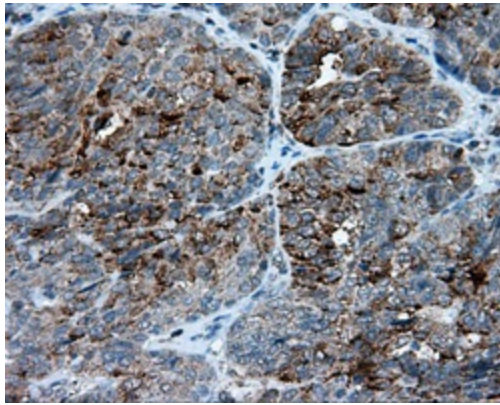
HEK293T cells were transfected with the pCMV6-ENTRY control (Left lane) or pCMV6-ENTRY FAHD2A ([RC211128], Right lane) cDNA for 48 hrs and lysed. Equivalent amounts of cell lysates (5 ug per lane) were separated by SDS-PAGE and immunoblotted with anti-FAHD2A. Positive lysates [LY402492] (100ug) and [LC402492] (20ug) can be purchased separately from OriGene.



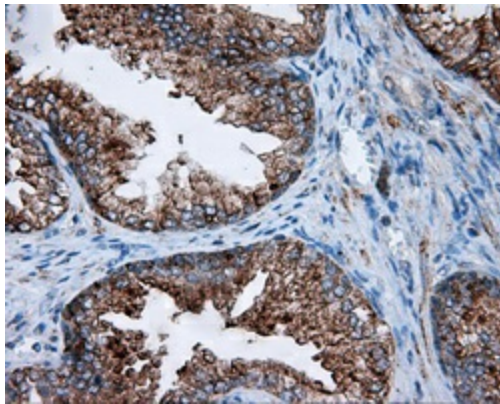
Immunohistochemical staining of paraffin-embedded liver tissue within the normal limits using anti-FAHD2A mouse monoclonal antibody. (Heat-induced epitope retrieval by 10mM citric buffer, pH6.0, 100°C for 10min, [TA500979], Dilution 1:50)



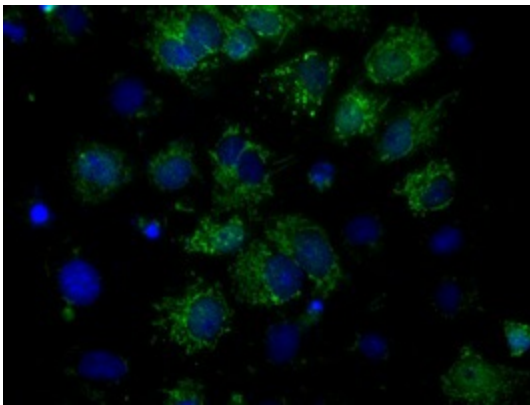
Immunohistochemical staining of paraffin-embedded Carcinoma of liver tissue using anti-FAHD2A mouse monoclonal antibody. (Heat-induced epitope retrieval by 10mM citric buffer, pH6.0, 100°C for 10min, [TA500979], Dilution 1:50)



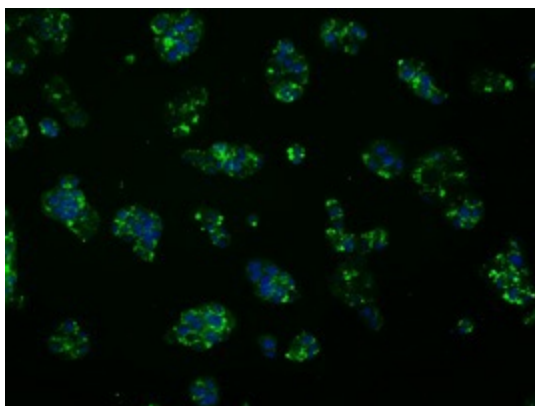
Immunohistochemical staining of paraffin-embedded Adenocarcinoma of endometrium tissue using anti-FAHD2A mouse monoclonal antibody. (Heat-induced epitope retrieval by 10mM citric buffer, pH6.0, 100°C for 10min, [TA500979], Dilution 1:50)



Immunohistochemical staining of paraffin-embedded prostate tissue within the normal limits using anti-FAHD2A mouse monoclonal antibody. (Heat-induced epitope retrieval by 10mM citric buffer, pH6.0, 100°C for 10min, [TA500979], Dilution 1:50)



Anti-FAHD2A mouse monoclonal antibody ([TA500979]) immunofluorescent staining of COS7 cells transiently transfected by pCMV6-ENTRY FAHD2A ([RC211128]).



Immunofluorescent staining of HepG2 cells using anti-FAHD2A mouse monoclonal antibody ([TA500979]).