

## Product datasheet for TA500967

### Annexin A1 (ANXA1) Mouse Monoclonal Antibody [Clone ID: OT13A8]

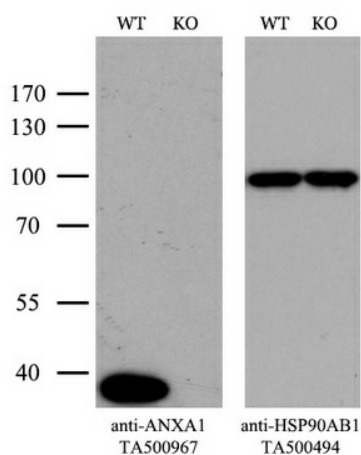
#### Product data:

Product Type:	Primary Antibodies
Clone Name:	OT13A8
Applications:	IF, IHC, WB
Reactivity:	Human
Host:	Mouse
Isotype:	IgG1
Clonality:	Monoclonal
Immunogen:	Full length human recombinant protein of human ANXA1 (NP_000691) produced in HEK293T cell.
Formulation:	PBS (pH 7.3) containing 1% BSA, 50% glycerol and 0.02% sodium azide.
Concentration:	0.9 mg/ml
Purification:	Purified from mouse ascites fluids by affinity chromatography
Predicted Protein Size:	38.5 kDa
Gene Name:	annexin A1
Database Link:	<a href="#">NP_000691 Entrez Gene 301 Human</a>
Background:	Annexin I belongs to a family of Ca(2+)-dependent phospholipid binding proteins which have a molecular weight of approximately 35,000 to 40,000 and are preferentially located on the cytosolic face of the plasma membrane. Annexin I protein has an apparent relative molecular mass of 40 kDa, with phospholipase A2 inhibitory activity. Since phospholipase A2 is required for the biosynthesis of the potent mediators of inflammation, prostaglandins and leukotrienes, annexin I may have potential anti-inflammatory activity.
Synonyms:	ANX1; LPC1
Protein Families:	Druggable Genome

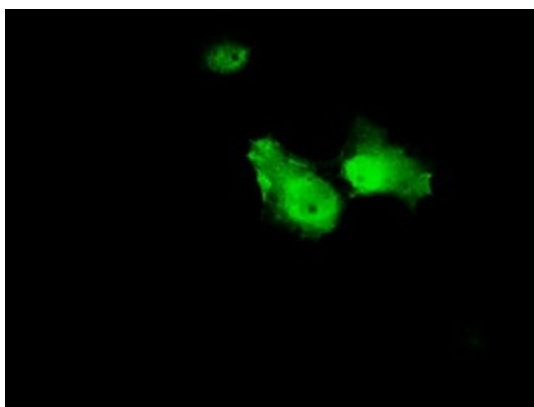


[View online »](#)

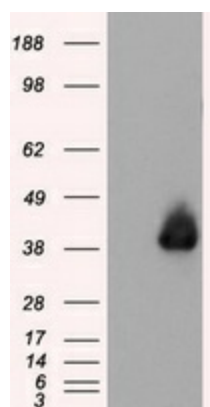
## Product images:



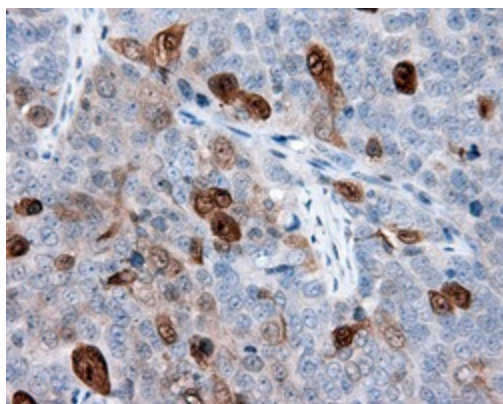
Equivalent amounts of cell lysates (10 ug per lane) of wild-type HeLa cells (WT, Cat# [LC810HELA](#)) and ANXA1-Knockout hela cells (KO, Cat# [LC810011](#)) were separated by SDS-PAGE and immunoblotted with anti-ANXA1 monoclonal antibody [TA500967](#). Then the blotted membrane was stripped and reprobed with anti-HSP90AB1 antibody ([TA500494](#)) as a loading control (1:500).



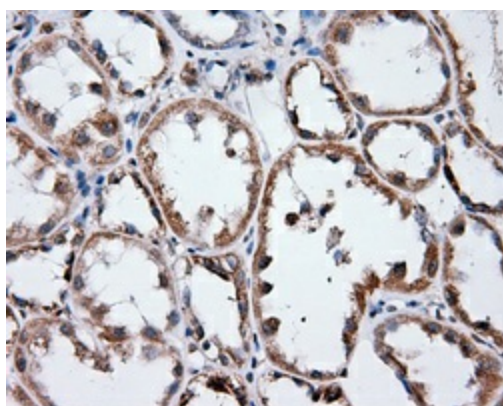
Anti-ANXA1 mouse monoclonal antibody (TA500967) immunofluorescent staining of COS7 cells transiently transfected by pCMV6-ENTRY ANXA1 (RC201569).



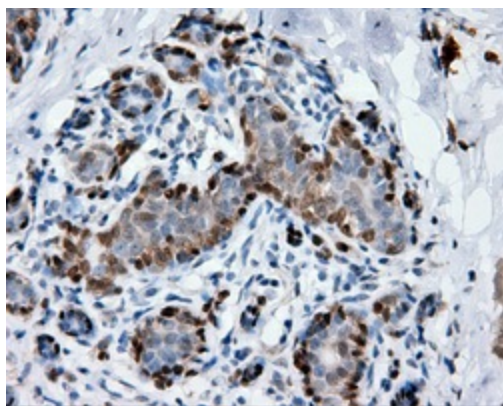
HEK293T cells were transfected with the pCMV6-ENTRY control (Left lane) or pCMV6-ENTRY ANXA1 (RC201569, Right lane) cDNA for 48 hrs and lysed. Equivalent amounts of cell lysates (5 ug per lane) were separated by SDS-PAGE and immunoblotted with anti-ANXA1. Positive lysates LY424560 (100ug) and LC424560 (20ug) can be purchased separately from OriGene.



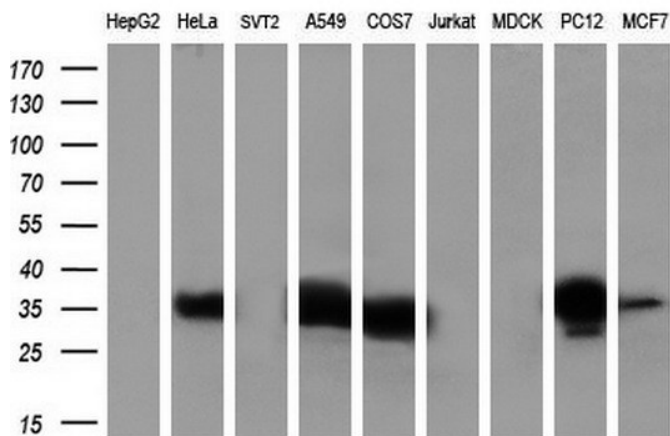
Immunohistochemical staining of paraffin-embedded Adenocarcinoma of ovary tissue using anti-ANXA1 mouse monoclonal antibody. (Heat-induced epitope retrieval by 10mM citric buffer, pH6.0, 100°C for 10min, TA500967, Dilution 1:50)



Immunohistochemical staining of paraffin-embedded Kidney tissue within the normal limits using anti-ANXA1 mouse monoclonal antibody. (Heat-induced epitope retrieval by 10mM citric buffer, pH6.0, 100°C for 10min, TA500967, Dilution 1:50)



Immunohistochemical staining of paraffin-embedded breast tissue within the normal limits using anti-ANXA1 mouse monoclonal antibody. (Heat-induced epitope retrieval by 10mM citric buffer, pH6.0, 100°C for 10min, TA500967, Dilution 1:50)



Western blot analysis of extracts (35ug) from 9 different cell lines by using anti-ANXA1 monoclonal antibody at 1:200 dilution. (HepG2: human; HeLa: human; SVT2: mouse; A549: human; COS7: monkey; Jurkat: human; MDCK: canine; PC12: rat; MCF7: human)