

Product datasheet for **TA500959BM**

BHMT Mouse Monoclonal Antibody (HRP conjugated) [Clone ID: OTI3E11]

Product data:

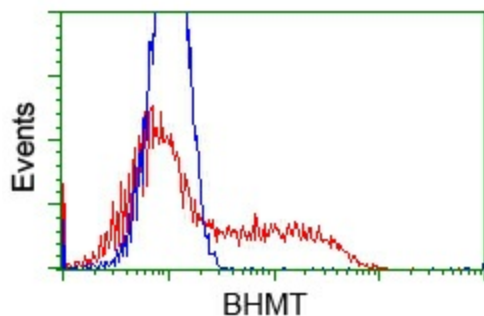
Product Type:	Primary Antibodies
Clone Name:	OTI3E11
Applications:	FC, IF, IHC, WB
Recommended Dilution:	IHC 1:200, WB: 1:200
Reactivity:	Human, Mouse, Rat
Host:	Mouse
Isotype:	IgG2a
Clonality:	Monoclonal
Immunogen:	Full length human recombinant protein of human BHMT (NP_001704) produced in HEK293T cell.
Formulation:	PBS (pH 7.3) containing 1% BSA, 50% glycerol.
Concentration:	0.5 mg/ml
Purification:	Purified from mouse ascites fluids or tissue culture supernatant by affinity chromatography (protein A/G)
Conjugation:	HRP
Storage:	Store at -20°C as received.
Stability:	Stable for 12 months from date of receipt.
Predicted Protein Size:	45 kDa
Gene Name:	betaine--homocysteine S-methyltransferase
Database Link:	NP_001704 Entrez Gene 12116 Mouse Entrez Gene 81508 Rat Entrez Gene 635 Human Q93088
Background:	This gene encodes a cytosolic enzyme that catalyzes the conversion of betaine and homocysteine to dimethylglycine and methionine, respectively. Defects in this gene could lead to hyperhomocyst(e)inemia, but such a defect has not yet been observed.
Synonyms:	BHMT1; HEL-S-61p



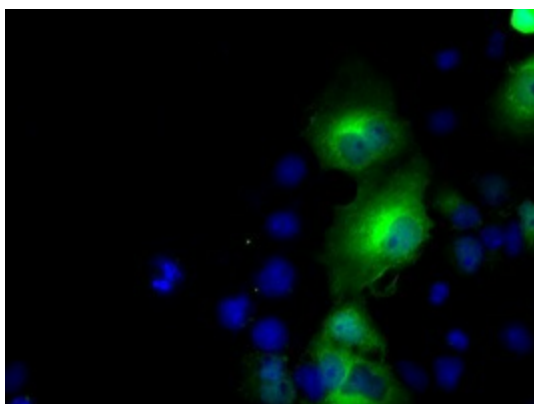
[View online »](#)

Protein Pathways: Cysteine and methionine metabolism, Glycine, serine and threonine metabolism, Metabolic pathways

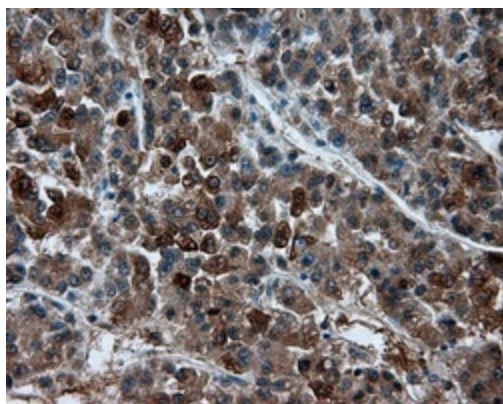
Product images:



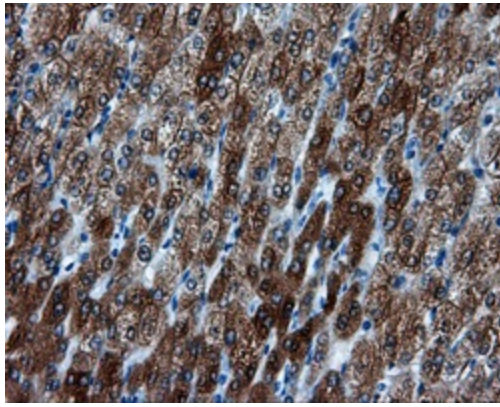
HEK293T cells transfected with either pCMV6-ENTRY BHMT ([RC203148]) (Red) or empty vector control plasmid (Blue) were immunostained with anti-BHMT mouse monoclonal ([TA500959]), and then analyzed by flow cytometry.



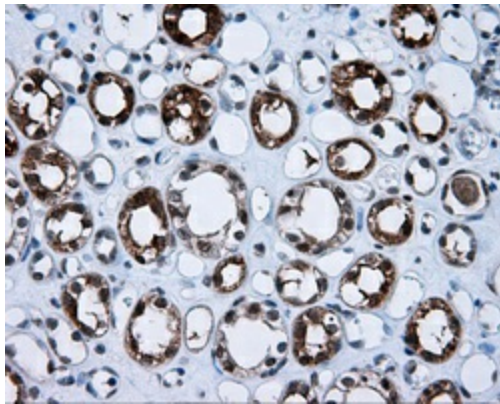
Western blot analysis of extracts (10ug) from HepG2 cell line by using anti-BHMT monoclonal antibody (1:200).



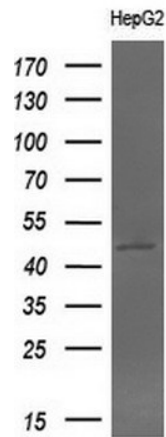
Immunohistochemical staining of paraffin-embedded Carcinoma of liver tissue using anti-BHMT mouse monoclonal antibody. (Heat-induced epitope retrieval by 10mM citric buffer, pH6.0, 100°C for 10min, [TA500959], Dilution 1:50)



Immunohistochemical staining of paraffin-embedded liver tissue within the normal limits using anti-BHMT mouse monoclonal antibody. (Heat-induced epitope retrieval by 10mM citric buffer, pH6.0, 100°C for 10min, [TA500959], Dilution 1:50)



Immunohistochemical staining of paraffin-embedded Kidney tissue within the normal limits using anti-BHMT mouse monoclonal antibody. (Heat-induced epitope retrieval by 10mM citric buffer, pH6.0, 100°C for 10min, [TA500959], Dilution 1:50)



Western blot analysis of extracts (10ug) from 1 cell line by using anti-BHMT monoclonal antibody (1:200).