

Product datasheet for **TA500949S**

Serine racemase (SRR) Mouse Monoclonal Antibody [Clone ID: OTI9E8]

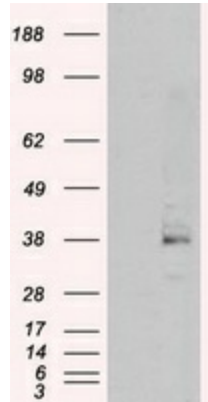
Product data:

Product Type:	Primary Antibodies
Clone Name:	OTI9E8
Applications:	FC, IF, IHC, WB
Recommended Dilution:	IHC 1:200, WB: 1:200
Reactivity:	Human, Mouse, Rat
Host:	Mouse
Isotype:	IgG1
Clonality:	Monoclonal
Immunogen:	Full length human recombinant protein of human SRR(NP_068766) produced in HEK293T cell.
Formulation:	PBS (pH 7.3) containing 1% BSA, 50% glycerol and 0.02% sodium azide.
Concentration:	0.86 mg/ml
Purification:	Purified from mouse ascites fluids or tissue culture supernatant by affinity chromatography (protein A/G)
Conjugation:	Unconjugated
Storage:	Store at -20°C as received.
Stability:	Stable for 12 months from date of receipt.
Predicted Protein Size:	36.6 kDa
Gene Name:	serine racemase
Database Link:	NP_068766 Entrez Gene 27364 Mouse Entrez Gene 303306 Rat Entrez Gene 63826 Human Q9GZT4
Background:	Catalyzes the synthesis of D-serine from L-serine
Synonyms:	ILV1; ISO1
Protein Pathways:	Glycine, serine and threonine metabolism

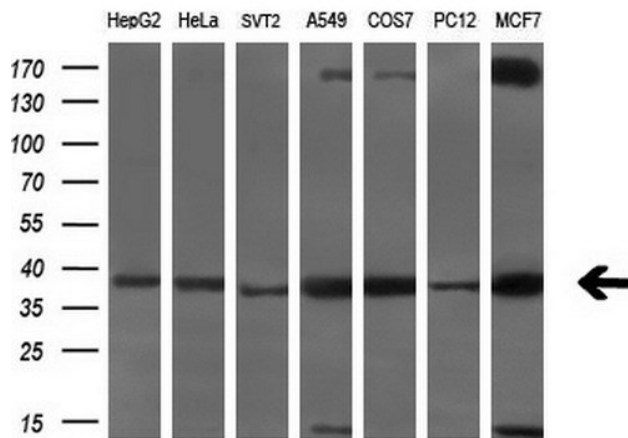


[View online »](#)

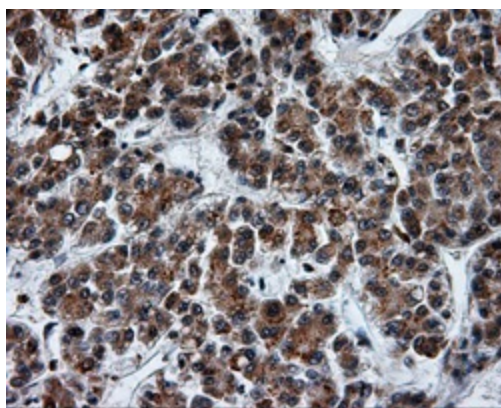
Product images:



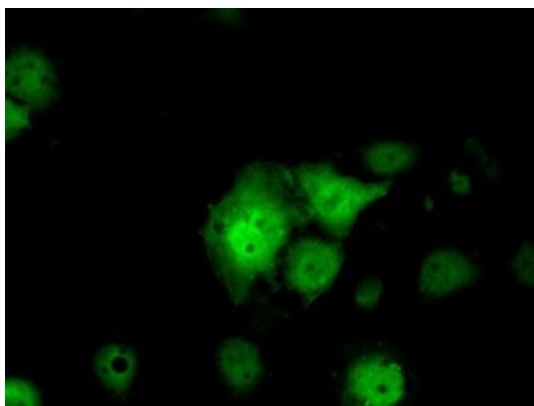
HEK293T cells were transfected with the pCMV6-ENTRY control (Left lane) or pCMV6-ENTRY SRR ([RC210359], Right lane) cDNA for 48 hrs and lysed. Equivalent amounts of cell lysates (5 ug per lane) were separated by SDS-PAGE and immunoblotted with anti-SRR ([TA500949]). Positive lysates [LY402897] (100ug) and [LC402897] (20ug) can be purchased separately from OriGene.



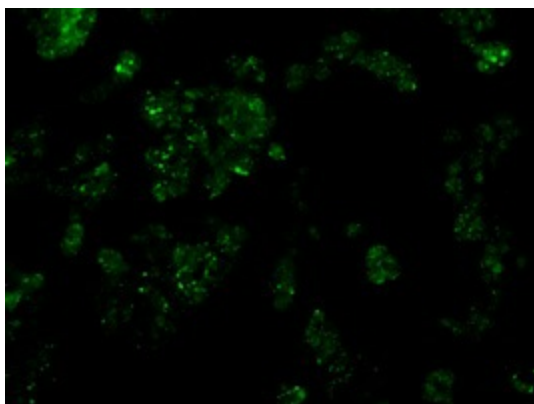
Western blot analysis of extracts (10ug) from 7 different cell lines by using anti-SRR monoclonal antibody (1:2000).



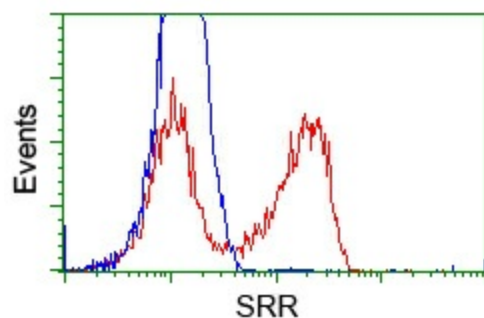
Immunohistochemical staining of paraffin-embedded Carcinoma of liver tissue using anti-SRR mouse monoclonal antibody. (Heat-induced epitope retrieval by 10mM citric buffer, pH6.0, 100°C for 10min, [TA500949], Dilution 1:50)



Anti-SRR mouse monoclonal antibody ([TA500949]) immunofluorescent staining of COS7 cells transiently transfected by pCMV6-ENTRY SRR ([RC210359]).



Immunofluorescent staining of HepG2 cells using anti-SRR mouse monoclonal antibody ([TA500949]).



HEK293T cells transfected with either pCMV6-ENTRY SRR ([RC210359]) (Red) or empty vector control plasmid (Blue) were immunostained with anti-SRR mouse monoclonal ([TA500949]), and then analyzed by flow cytometry.