

## Product datasheet for **TA500948AM**

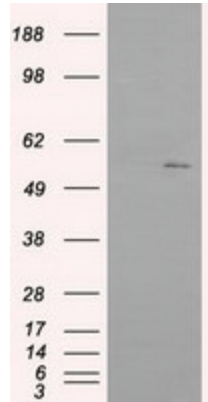
### IFIT1 Mouse Monoclonal Antibody (Biotin conjugated) [Clone ID: OTI3G8]

#### Product data:

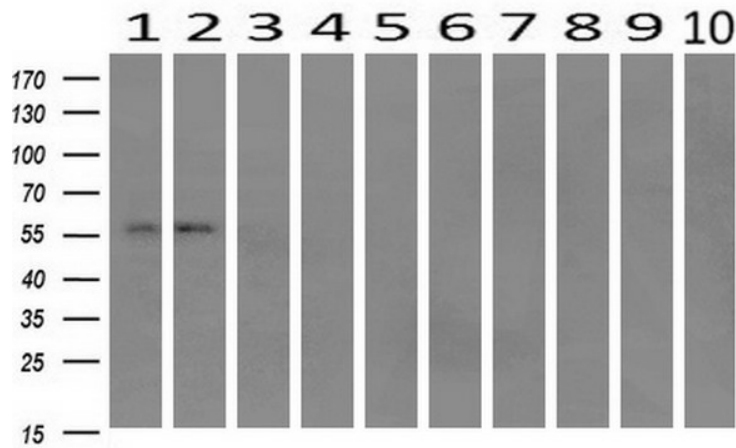
Product Type:	Primary Antibodies
Clone Name:	OTI3G8
Applications:	FC, IF, IHC, WB
Recommended Dilution:	WB 1:500~1000, IHC 1:50, IF 1:50~100, FLOW 1:100
Reactivity:	Human, Mouse, Rat, Monkey
Host:	Mouse
Isotype:	IgG2a
Clonality:	Monoclonal
Immunogen:	Full length human recombinant protein of human IFIT1 (NP_000899) produced in HEK293T cell.
Formulation:	PBS (pH 7.3) containing 1% BSA, 50% glycerol and 0.02% sodium azide.
Concentration:	0.5 mg/ml
Purification:	Purified from mouse ascites fluids or tissue culture supernatant by affinity chromatography (protein A/G)
Conjugation:	Biotin
Storage:	Store at -20°C as received.
Stability:	Stable for 12 months from date of receipt.
Predicted Protein Size:	55.2 kDa
Gene Name:	interferon induced protein with tetratricopeptide repeats 1
Database Link:	<a href="#">NP_001539</a> <a href="#">Entrez Gene 15957 Mouse</a> <a href="#">Entrez Gene 56824 Rat</a> <a href="#">Entrez Gene 695683 Monkey</a> <a href="#">Entrez Gene 3434 Human</a> <a href="#">P09914</a>
Synonyms:	C56; G10P1; IFI-56; IFI-56K; IFI56; IFIT-1; IFNAI1; ISG56; P56; RNM561



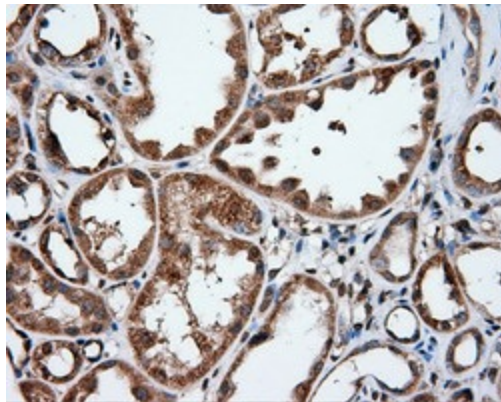
[View online »](#)

**Product images:**


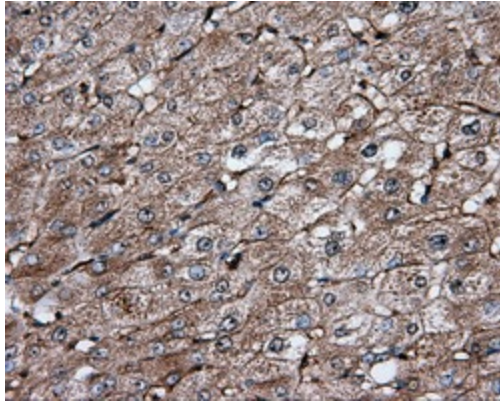
HEK293T cells were transfected with the pCMV6-ENTRY control (Cat# [PS100001], Left lane) or pCMV6-ENTRY IFIT1 (Cat# [RC203320], Right lane) cDNA for 48 hrs and lysed. Equivalent amounts of cell lysates (5 ug per lane) were separated by SDS-PAGE and immunoblotted with anti-IFIT1 (Cat# [TA500948]). Positive lysates [LY400592] (100ug) and [LC400592] (20ug) can be purchased separately from OriGene.



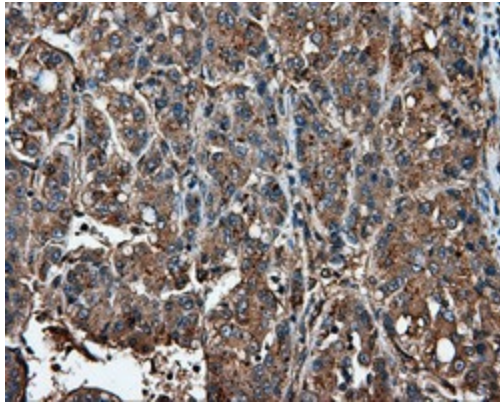
Western blot analysis of extracts (10ug) from 10 Human tissue by using anti-IFIT1 monoclonal antibody at 1:200 (1: Testis; 2: Omentum; 3: Uterus; 4: Breast; 5: Brain; 6: Liver; 7: Ovary; 8: Thyroid gland; 9: colon; 10: spleen).



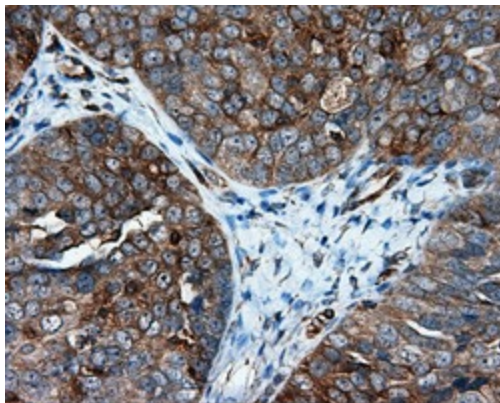
Immunohistochemical staining of paraffin-embedded Human Kidney tissue within the normal limits using anti-IFIT1 mouse monoclonal antibody. (Heat-induced epitope retrieval by 10mM citric buffer, pH6.0, 100°C for 10min, [TA500948])



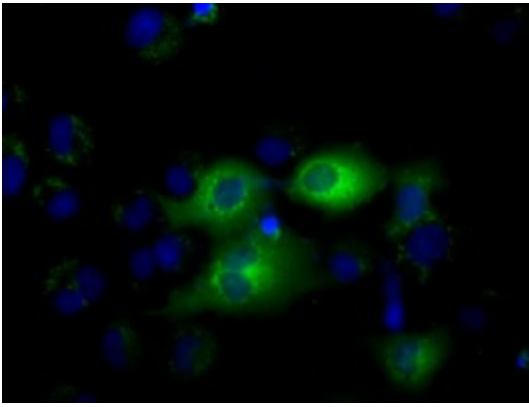
Immunohistochemical staining of paraffin-embedded Human liver tissue within the normal limits using anti-IFIT1 mouse monoclonal antibody. (Heat-induced epitope retrieval by 10mM citric buffer, pH6.0, 100°C for 10min, [TA500948])



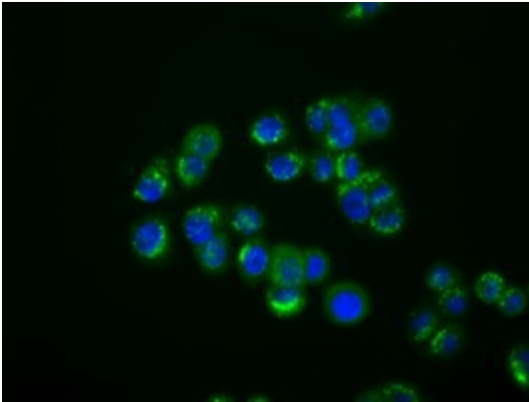
Immunohistochemical staining of paraffin-embedded Carcinoma of Human liver tissue using anti-IFIT1 mouse monoclonal antibody. (Heat-induced epitope retrieval by 10mM citric buffer, pH6.0, 100°C for 10min, [TA500948])



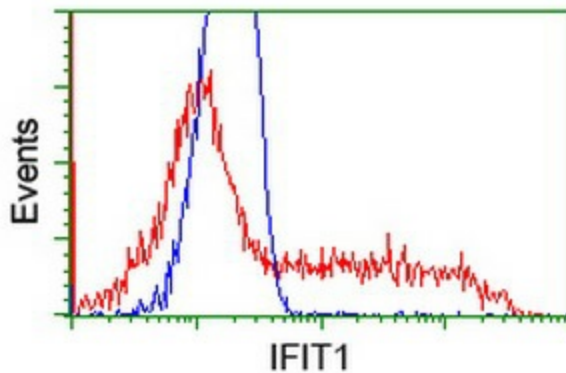
Immunohistochemical staining of paraffin-embedded Adenocarcinoma of Human ovary tissue using anti-IFIT1 mouse monoclonal antibody. (Heat-induced epitope retrieval by 10mM citric buffer, pH6.0, 100°C for 10min, [TA500948])



Anti-IFIT1 mouse monoclonal antibody ([TA500948]) immunofluorescent staining of COS7 cells transiently transfected by pCMV6-ENTRY IFIT1 ([RC203320]).



Immunofluorescent staining of HT29 cells using anti-IFIT1 mouse monoclonal antibody ([TA500948]).



HEK293T cells transfected with either [RC203320] overexpress plasmid (Red) or empty vector control plasmid (Blue) were immunostained by anti-IFIT1 antibody ([TA500948]), and then analyzed by flow cytometry.