

## Product datasheet for **TA500943AM**

### Serine racemase (SRR) Mouse Monoclonal Antibody (Biotin conjugated) [Clone ID: OTI7B6]

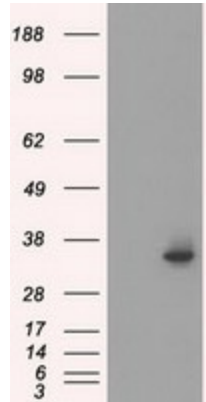
#### Product data:

Product Type:	Primary Antibodies
Clone Name:	OTI7B6
Applications:	FC, IHC, WB
Recommended Dilution:	WB 1:2000, IHC 1:50, Flow 1:100
Reactivity:	Human, Mouse, Rat
Host:	Mouse
Isotype:	IgG1
Clonality:	Monoclonal
Immunogen:	Full length human recombinant protein of human SRR(NP_068766) produced in HEK293T cell.
Formulation:	PBS (pH 7.3) containing 1% BSA, 50% glycerol and 0.02% sodium azide.
Concentration:	0.5 mg/ml
Purification:	Purified from mouse ascites fluids or tissue culture supernatant by affinity chromatography (protein A/G)
Conjugation:	Biotin
Storage:	Store at -20°C as received.
Stability:	Stable for 12 months from date of receipt.
Predicted Protein Size:	36.6 kDa
Gene Name:	serine racemase
Database Link:	<a href="#">NP_068766</a> <a href="#">Entrez Gene 27364 Mouse</a> <a href="#">Entrez Gene 303306 Rat</a> <a href="#">Entrez Gene 63826 Human</a> <a href="#">Q9GZT4</a>
Background:	Catalyzes the synthesis of D-serine from L-serine
Synonyms:	ILV1; ISO1
Protein Pathways:	Glycine, serine and threonine metabolism

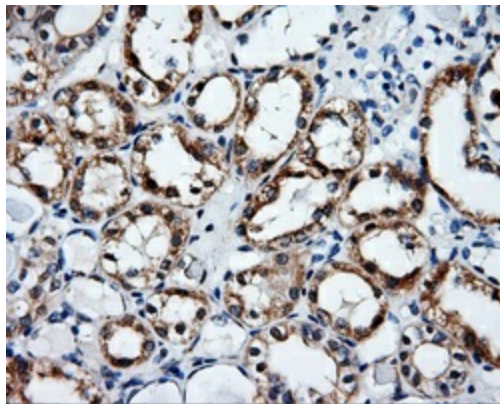


[View online »](#)

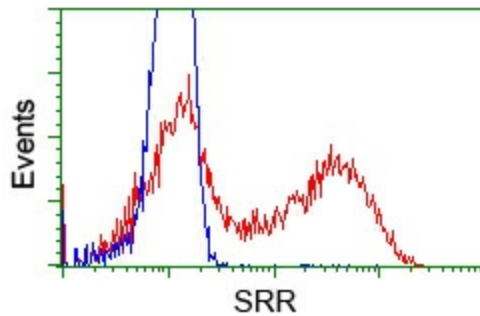
**Product images:**



HEK293T cells were transfected with the pCMV6-ENTRY control (Left lane) or pCMV6-ENTRY SRR ([RC210359], Right lane) cDNA for 48 hrs and lysed. Equivalent amounts of cell lysates (5 ug per lane) were separated by SDS-PAGE and immunoblotted with anti-SRR. Positive lysates [LY402897] (100ug) and [LC402897] (20ug) can be purchased separately from OriGene.



Immunohistochemical staining of paraffin-embedded Kidney tissue within the normal limits using anti-SRRmouse monoclonal antibody. (Heat-induced epitope retrieval by 10mM citric buffer, pH6.0, 100°C for 10min, [TA500943], Dilution 1:50)



HEK293T cells transfected with either pCMV6-ENTRY SRR ([RC210359]) (Red) or empty vector control plasmid (Blue) were immunostained with anti-SRR mouse monoclonal ([TA500943]), and then analyzed by flow cytometry.