

Product datasheet for **TA500940BM**

Serine racemase (SRR) Mouse Monoclonal Antibody (HRP conjugated) [Clone ID: OTI2E3]

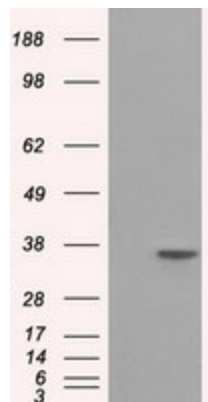
Product data:

Product Type:	Primary Antibodies
Clone Name:	OTI2E3
Applications:	FC, IF, IHC, WB
Recommended Dilution:	WB 1:2000, IHC 1:50, IF 1:100, Flow 1:100
Reactivity:	Human, Mouse, Rat
Host:	Mouse
Isotype:	IgG1
Clonality:	Monoclonal
Immunogen:	Full length huamn recombinant protein of human SRR (NP_068766) produced in HEK293T cell.
Formulation:	PBS (pH 7.3) containing 1% BSA, 50% glycerol.
Concentration:	0.5 mg/ml
Purification:	Purified from mouse ascites fluids or tissue culture supernatant by affinity chromatography (protein A/G)
Conjugation:	HRP
Storage:	Store at -20°C as received.
Stability:	Stable for 12 months from date of receipt.
Predicted Protein Size:	36.6 kDa
Gene Name:	serine racemase
Database Link:	NP_068766 Entrez Gene 27364 Mouse Entrez Gene 303306 Rat Entrez Gene 63826 Human Q9GZT4
Background:	Catalyzes the synthesis of D-serine from L-serine
Synonyms:	ILV1; ISO1
Protein Pathways:	Glycine, serine and threonine metabolism

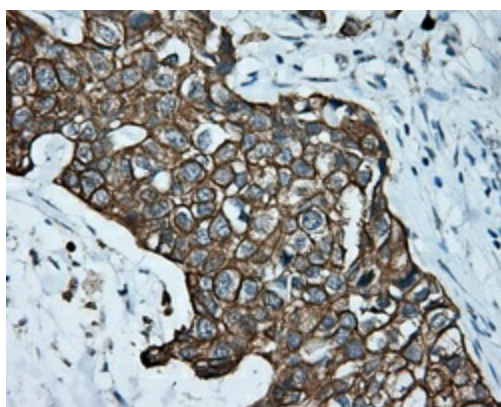


[View online »](#)

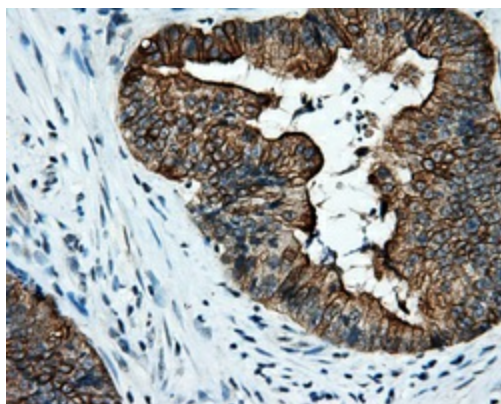
Product images:



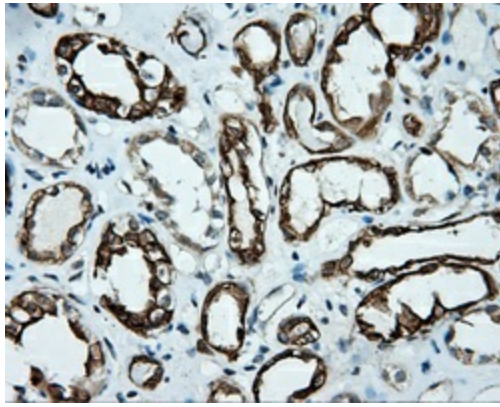
HEK293T cells were transfected with the pCMV6-ENTRY control (Cat# [PS100001], Left lane) or pCMV6-ENTRY SRR (Cat# [RC210359], Right lane) cDNA for 48 hrs and lysed. Equivalent amounts of cell lysates (5 ug per lane) were separated by SDS-PAGE and immunoblotted with anti-SRR antibody (Cat# [TA500940]). Positive lysates [LY402897] (100ug) and [LC402897] (20ug) can be purchased separately from OriGene.



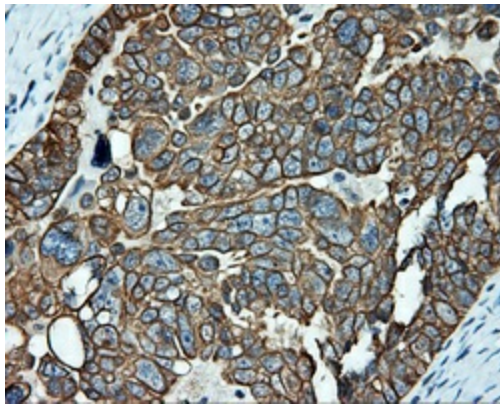
Immunohistochemical staining of paraffin-embedded Adenocarcinoma of breast tissue using anti-SRR mouse monoclonal antibody. (Heat-induced epitope retrieval by 10mM citric buffer, pH6.0, 100°C for 10min, [TA500940], Dilution 1:50)



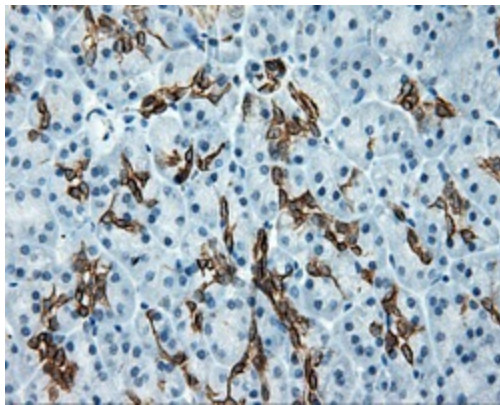
Immunohistochemical staining of paraffin-embedded Adenocarcinoma of colon tissue using anti-SRR mouse monoclonal antibody. (Heat-induced epitope retrieval by 10mM citric buffer, pH6.0, 100°C for 10min, [TA500940], Dilution 1:50)



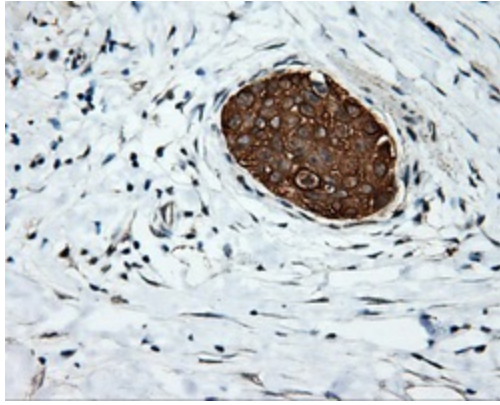
Immunohistochemical staining of paraffin-embedded Kidney tissue within the normal limits using anti-SRR mouse monoclonal antibody. (Heat-induced epitope retrieval by 10mM citric buffer, pH6.0, 100°C for 10min, [TA500940], Dilution 1:50)



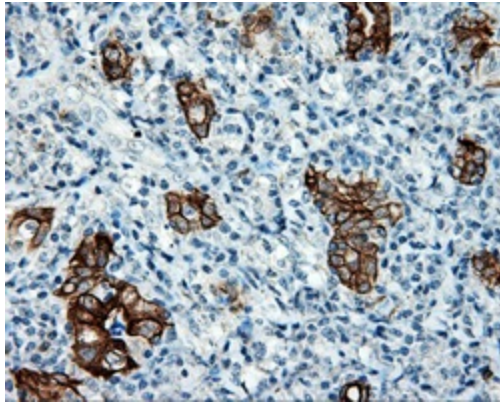
Immunohistochemical staining of paraffin-embedded Ovary tissue within the normal limits using anti-SRR mouse monoclonal antibody. (Heat-induced epitope retrieval by 10mM citric buffer, pH6.0, 100°C for 10min, [TA500940], Dilution 1:50)



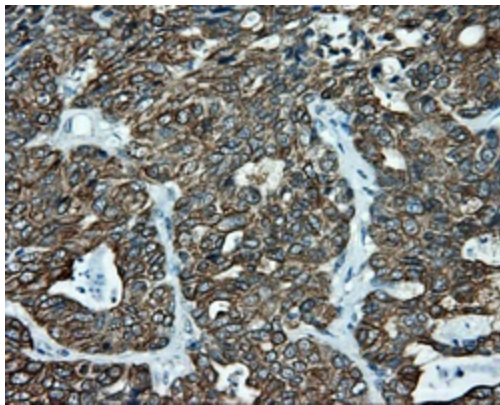
Immunohistochemical staining of paraffin-embedded pancreas tissue within the normal limits using anti-SRR mouse monoclonal antibody. (Heat-induced epitope retrieval by 10mM citric buffer, pH6.0, 100°C for 10min, [TA500940], Dilution 1:50)



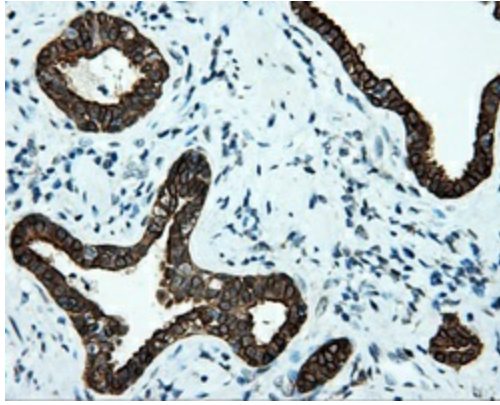
Immunohistochemical staining of paraffin-embedded Carcinoma of pancreas tissue using anti-SRR mouse monoclonal antibody. (Heat-induced epitope retrieval by 10mM citric buffer, pH6.0, 100°C for 10min, [TA500940], Dilution 1:50)



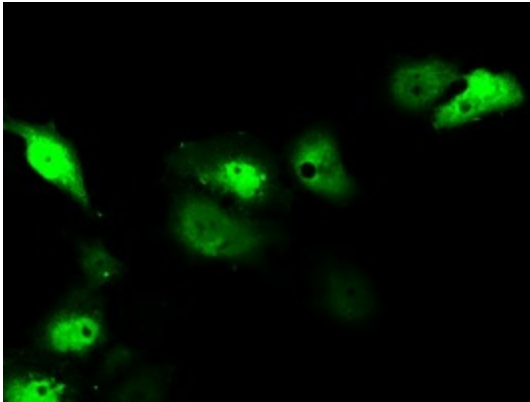
Immunohistochemical staining of paraffin-embedded Carcinoma of thyroid tissue using anti-SRR mouse monoclonal antibody. (Heat-induced epitope retrieval by 10mM citric buffer, pH6.0, 100°C for 10min, [TA500940], Dilution 1:50)



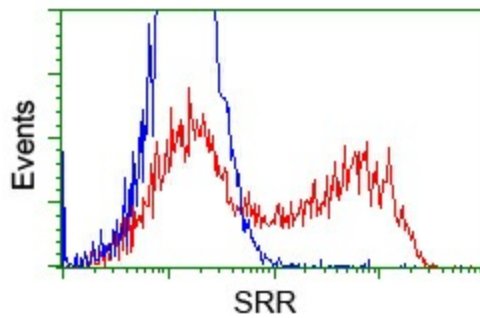
Immunohistochemical staining of paraffin-embedded Adenocarcinoma of endometrium tissue using anti-SRR mouse monoclonal antibody. (Heat-induced epitope retrieval by 10mM citric buffer, pH6.0, 100°C for 10min, [TA500940], Dilution 1:50)



Immunohistochemical staining of paraffin-embedded Carcinoma of prostate tissue using anti-SRR mouse monoclonal antibody. (Heat-induced epitope retrieval by 10mM citric buffer, pH6.0, 100°C for 10min, [TA500940], Dilution 1:50)



Anti-SRR mouse monoclonal antibody ([TA500940]) immunofluorescent staining of COS7 cells transiently transfected by pCMV6-ENTRY SRR ([RC210359]).



HEK293T cells transfected with either pCMV6-ENTRY SRR ([RC210359]) (Red) or empty vector control plasmid (Blue) were immunostained with anti-SRR mouse monoclonal ([TA500940]), and then analyzed by flow cytometry.