

## Product datasheet for **TA500919**

### **CAMK1D Mouse Monoclonal Antibody [Clone ID: OTI2C6]**

#### **Product data:**

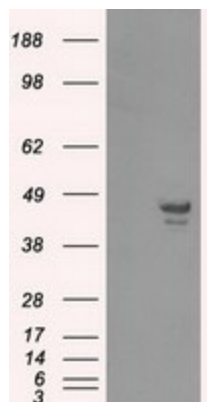
<b>Product Type:</b>	Primary Antibodies
<b>Clone Name:</b>	OTI2C6
<b>Applications:</b>	IF, IHC, WB
<b>Recommended Dilution:</b>	WB 1:2000, IHC 1:50, IF 1:100
<b>Reactivity:</b>	Human, Mouse, Rat
<b>Host:</b>	Mouse
<b>Isotype:</b>	IgG1
<b>Clonality:</b>	Monoclonal
<b>Immunogen:</b>	Full length human recombinant protein of human CAMK1D (NP_065130) produced in HEK293T cell.
<b>Formulation:</b>	PBS (pH 7.3) containing 1% BSA, 50% glycerol and 0.02% sodium azide.
<b>Concentration:</b>	1 mg/ml
<b>Purification:</b>	Purified from mouse ascites fluids or tissue culture supernatant by affinity chromatography (protein A/G)
<b>Conjugation:</b>	Unconjugated
<b>Storage:</b>	Store at -20°C as received.
<b>Stability:</b>	Stable for 12 months from date of receipt.
<b>Predicted Protein Size:</b>	42.9 kDa
<b>Gene Name:</b>	calcium/calmodulin dependent protein kinase ID
<b>Database Link:</b>	<a href="#">NP_705718</a> <a href="#">Entrez Gene 227541 Mouse</a> <a href="#">Entrez Gene 307124 Rat</a> <a href="#">Entrez Gene 57118 Human</a> <a href="#">Q8IU85</a>
<b>Background:</b>	This gene encodes a member of the Ca <sup>2+</sup> /calmodulin-dependent protein kinase 1 subfamily of serine/threonine kinases. The encoded protein may be involved in the regulation of granulocyte function through the chemokine signal transduction pathway. Alternatively spliced transcript variants encoding different isoforms of this gene have been described.
<b>Synonyms:</b>	CaM-K1; CaMKID; CKLiK



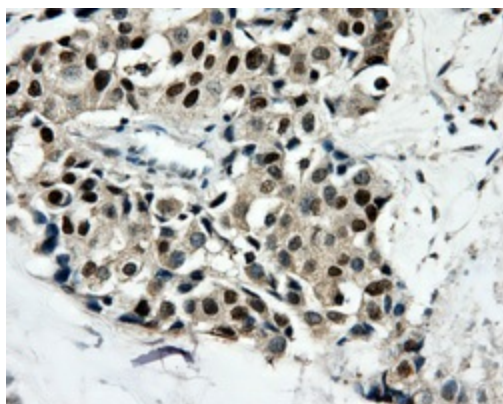
[View online »](#)

Protein Families: Druggable Genome, Protein Kinase

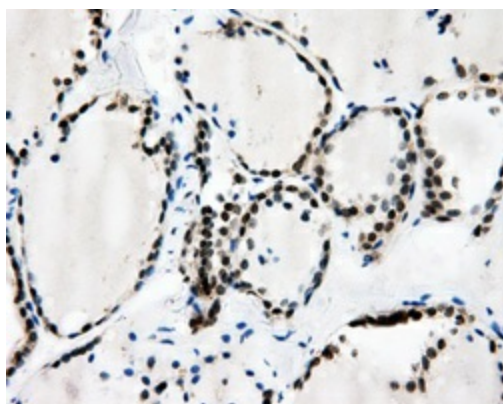
**Product images:**



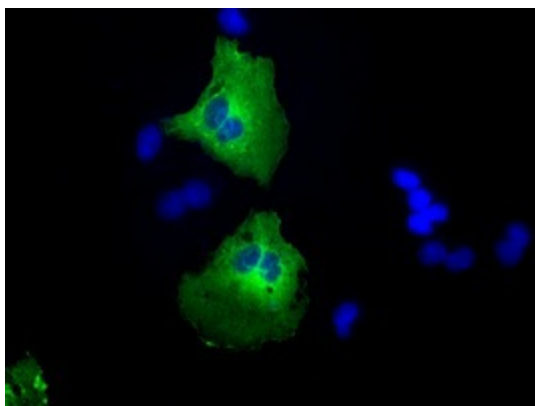
HEK293T cells were transfected with the pCMV6-ENTRY control (Cat# [PS100001], Left lane) or pCMV6-ENTRY CAMK1D (Cat# [RC207736], Right lane) cDNA for 48 hrs and lysed. Equivalent amounts of cell lysates (5 ug per lane) were separated by SDS-PAGE and immunoblotted with anti-CAMK1D (Cat# TA500919). Positive lysates [LY407015] (100ug) and [LC407015] (20ug) can be purchased separately from OriGene.



Immunohistochemical staining of paraffin-embedded Adenocarcinoma of breast tissue using anti-CAMK1D mouse monoclonal antibody. (Heat-induced epitope retrieval by 10mM citric buffer, pH6.0, 100°C for 10min, TA500919, Dilution 1:50)



Immunohistochemical staining of paraffin-embedded thyroid tissue within the normal limits using anti-CAMK1D mouse monoclonal antibody. (Heat-induced epitope retrieval by 10mM citric buffer, pH6.0, 100°C for 10min, TA500919, Dilution 1:50)



Anti-CAMK1D mouse monoclonal antibody (TA500919) immunofluorescent staining of COS7 cells transiently transfected by pCMV6-ENTRY CAMK1D ([RC207736]).