

## Product datasheet for **TA500907AM**

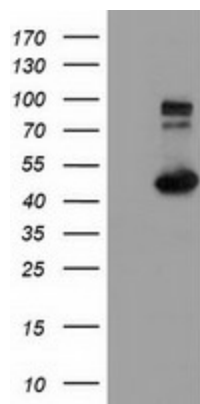
### **HIPPI (IFT57) Mouse Monoclonal Antibody (Biotin conjugated) [Clone ID: OTI1H2]**

#### **Product data:**

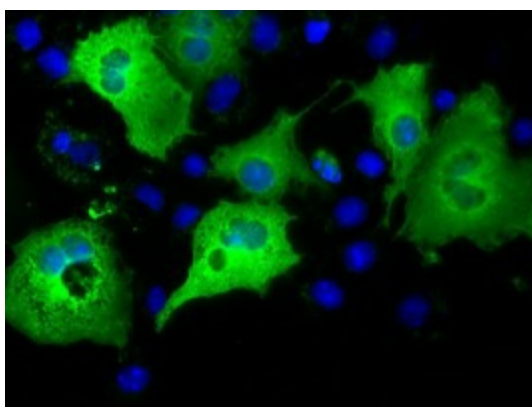
Product Type:	Primary Antibodies
Clone Name:	OTI1H2
Applications:	IF, WB
Recommended Dilution:	WB 1:2000, IF 1:100
Reactivity:	Human, Mouse, Rat
Host:	Mouse
Isotype:	IgG1
Clonality:	Monoclonal
Immunogen:	Full length human recombinant protein of human IFT57 ( NP_060480) produced in HEK293T cell.
Formulation:	PBS (pH 7.3) containing 1% BSA, 50% glycerol and 0.02% sodium azide.
Concentration:	0.5 mg/ml
Purification:	Purified from mouse ascites fluids or tissue culture supernatant by affinity chromatography (protein A/G)
Conjugation:	Biotin
Storage:	Store at -20°C as received.
Stability:	Stable for 12 months from date of receipt.
Predicted Protein Size:	48.9 kDa
Gene Name:	intraflagellar transport 57
Database Link:	<a href="#">NP_060480</a> <a href="#">Entrez Gene 73916 Mouse</a> <a href="#">Entrez Gene 303968 Rat</a> <a href="#">Entrez Gene 55081 Human</a> <a href="#">Q9NWB7</a>
Synonyms:	ESRRBL1; HIPPI; MHS4R2
Protein Families:	Druggable Genome
Protein Pathways:	Huntington's disease



[View online »](#)

**Product images:**

HEK293T cells were transfected with the pCMV6-ENTRY control (Left lane) or pCMV6-ENTRY IFT57 ([RC204116], Right lane) cDNA for 48 hrs and lysed. Equivalent amounts of cell lysates (5 ug per lane) were separated by SDS-PAGE and immunoblotted with anti-IFT57. Positive lysates [LY402637] (100ug) and [LC402637] (20ug) can be purchased separately from OriGene.



Anti-IFT57 mouse monoclonal antibody ([TA500907]) immunofluorescent staining of COS7 cells transiently transfected by pCMV6-ENTRY IFT57 ([RC204116]).