

Product datasheet for **TA500905BM**

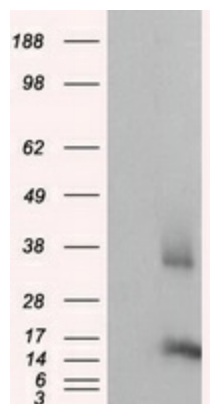
CISD1 Mouse Monoclonal Antibody (HRP conjugated) [Clone ID: OTI3A1]

Product data:

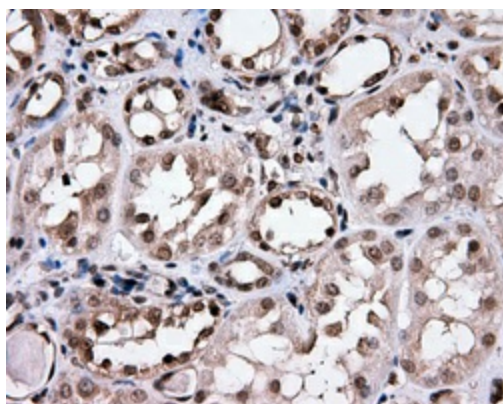
Product Type:	Primary Antibodies
Clone Name:	OTI3A1
Applications:	IF, IHC, WB
Recommended Dilution:	WB 1:2000, IHC 1:50, IF 1:100
Reactivity:	Human, Mouse, Rat
Host:	Mouse
Isotype:	IgG1
Clonality:	Monoclonal
Immunogen:	Full length human recombinant protein of human CISD1 (NP_060934) produced in HEK293T cell.
Formulation:	PBS (pH 7.3) containing 1% BSA, 50% glycerol.
Concentration:	0.5 mg/ml
Purification:	Purified from mouse ascites fluids or tissue culture supernatant by affinity chromatography (protein A/G)
Conjugation:	HRP
Storage:	Store at -20°C as received.
Stability:	Stable for 12 months from date of receipt.
Predicted Protein Size:	12.2 kDa
Gene Name:	CDGSH iron sulfur domain 1
Database Link:	NP_060934 Entrez Gene 52637 Mouse Entrez Gene 294362 Rat Entrez Gene 55847 Human Q9NZ45
Background:	CISD1 is a member of the CDGSH domain-containing family and may play a role in the regulation of mitochondrial oxidative capacity
Synonyms:	C10orf70; MDS029; mitoNEET; ZCD1
Protein Families:	Transmembrane



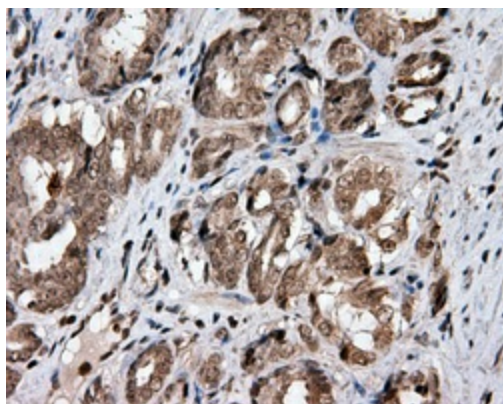
[View online »](#)

Product images:

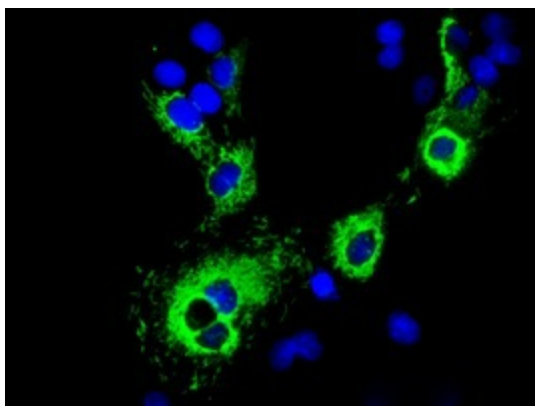
HEK293T cells were transfected with the pCMV6-ENTRY control (Left lane) or pCMV6-ENTRY CISD1 ([RC203308], Right lane) cDNA for 48 hrs and lysed. Equivalent amounts of cell lysates (5 ug per lane) were separated by SDS-PAGE and immunoblotted with anti-CISD1. Positive lysates [LY413042] (100ug) and [LC413042] (20ug) can be purchased separately from OriGene.



Immunohistochemical staining of paraffin-embedded Kidney tissue within the normal limits using anti-CISD1 mouse monoclonal antibody. (Heat-induced epitope retrieval by 10mM citric buffer, pH6.0, 100°C for 10min, [TA500905], Dilution 1:50)



Immunohistochemical staining of paraffin-embedded Carcinoma of prostate tissue using anti-CISD1 mouse monoclonal antibody. (Heat-induced epitope retrieval by 10mM citric buffer, pH6.0, 100°C for 10min, [TA500905], Dilution 1:50)



Anti-CISD1 mouse monoclonal antibody ([TA500905]) immunofluorescent staining of COS7 cells transiently transfected by pCMV6-ENTRY CISD1 ([RC203308]).