

Product datasheet for **TA500905AM**

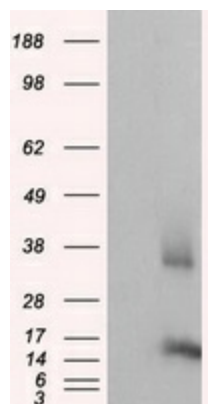
CISD1 Mouse Monoclonal Antibody (Biotin conjugated) [Clone ID: OTI3A1]

Product data:

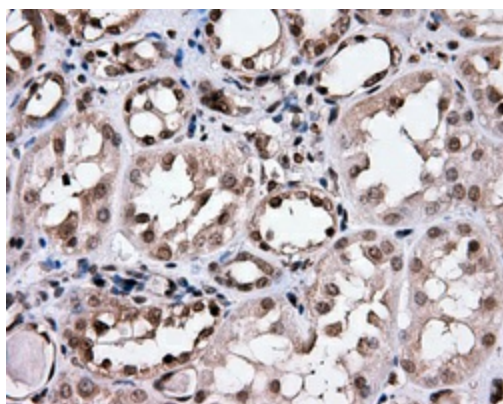
| | |
|-------------------------|---|
| Product Type: | Primary Antibodies |
| Clone Name: | OTI3A1 |
| Applications: | IF, IHC, WB |
| Recommended Dilution: | WB 1:2000, IHC 1:50, IF 1:100 |
| Reactivity: | Human, Mouse, Rat |
| Host: | Mouse |
| Isotype: | IgG1 |
| Clonality: | Monoclonal |
| Immunogen: | Full length human recombinant protein of human CISD1 (NP_060934) produced in HEK293T cell. |
| Formulation: | PBS (pH 7.3) containing 1% BSA, 50% glycerol and 0.02% sodium azide. |
| Concentration: | 0.5 mg/ml |
| Purification: | Purified from mouse ascites fluids or tissue culture supernatant by affinity chromatography (protein A/G) |
| Conjugation: | Biotin |
| Storage: | Store at -20°C as received. |
| Stability: | Stable for 12 months from date of receipt. |
| Predicted Protein Size: | 12.2 kDa |
| Gene Name: | CDGSH iron sulfur domain 1 |
| Database Link: | NP_060934 Entrez Gene 52637 Mouse Entrez Gene 294362 Rat Entrez Gene 55847 Human Q9NZ45 |
| Background: | CISD1 is a member of the CDGSH domain-containing family and may play a role in the regulation of mitochondrial oxidative capacity |
| Synonyms: | C10orf70; MDS029; mitoNEET; ZCD1 |
| Protein Families: | Transmembrane |



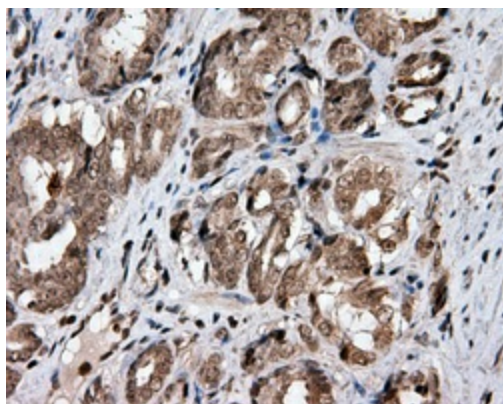
[View online »](#)

Product images:


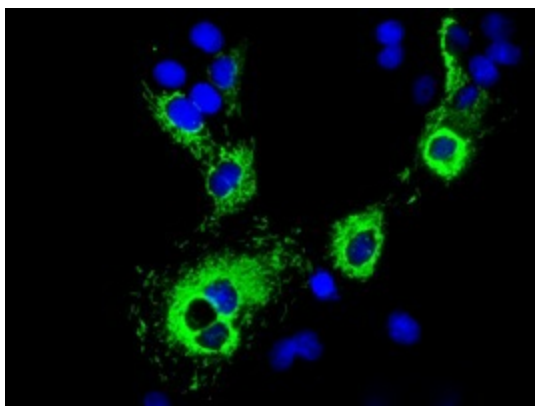
HEK293T cells were transfected with the pCMV6-ENTRY control (Left lane) or pCMV6-ENTRY CISD1 ([RC203308], Right lane) cDNA for 48 hrs and lysed. Equivalent amounts of cell lysates (5 ug per lane) were separated by SDS-PAGE and immunoblotted with anti-CISD1. Positive lysates [LY413042] (100ug) and [LC413042] (20ug) can be purchased separately from OriGene.



Immunohistochemical staining of paraffin-embedded Kidney tissue within the normal limits using anti-CISD1 mouse monoclonal antibody. (Heat-induced epitope retrieval by 10mM citric buffer, pH6.0, 100°C for 10min, [TA500905], Dilution 1:50)



Immunohistochemical staining of paraffin-embedded Carcinoma of prostate tissue using anti-CISD1 mouse monoclonal antibody. (Heat-induced epitope retrieval by 10mM citric buffer, pH6.0, 100°C for 10min, [TA500905], Dilution 1:50)



Anti-CISD1 mouse monoclonal antibody ([TA500905]) immunofluorescent staining of COS7 cells transiently transfected by pCMV6-ENTRY CISD1 ([RC203308]).