

Product datasheet for **TA500891M**

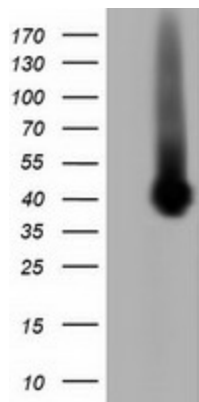
Pleckstrin (PLEK) Mouse Monoclonal Antibody [Clone ID: OTI4G6]

Product data:

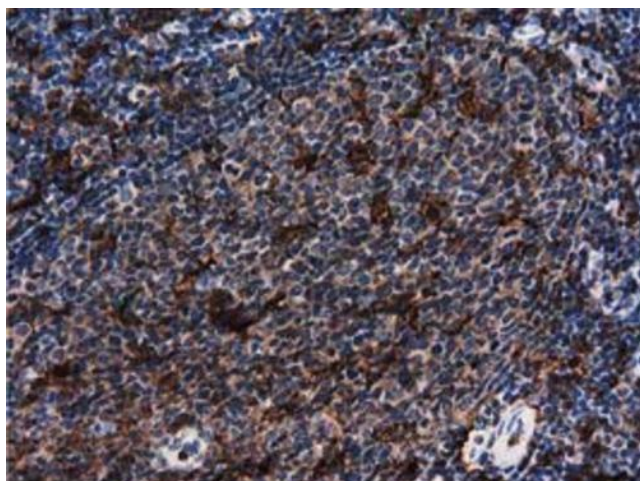
Product Type:	Primary Antibodies
Clone Name:	OTI4G6
Applications:	FC, IHC, WB
Recommended Dilution:	WB 1:500~2000, FLOW 1:100 IHC: 1:150
Reactivity:	Human, Mouse, Rat
Host:	Mouse
Isotype:	IgG2b
Clonality:	Monoclonal
Immunogen:	Full length human recombinant protein of human PLEK (NP_002665) produced in HEK293T cell.
Formulation:	PBS (pH 7.3) containing 1% BSA, 50% glycerol and 0.02% sodium azide.
Concentration:	0.78 mg/ml
Purification:	Purified from mouse ascites fluids or tissue culture supernatant by affinity chromatography (protein A/G)
Conjugation:	Unconjugated
Storage:	Store at -20°C as received.
Stability:	Stable for 12 months from date of receipt.
Predicted Protein Size:	39.9 kDa
Gene Name:	pleckstrin
Database Link:	NP_002655 Entrez Gene 56193 Mouse Entrez Gene 364206 Rat Entrez Gene 5341 Human P08567
Synonyms:	P47
Protein Families:	Druggable Genome


[View online »](#)

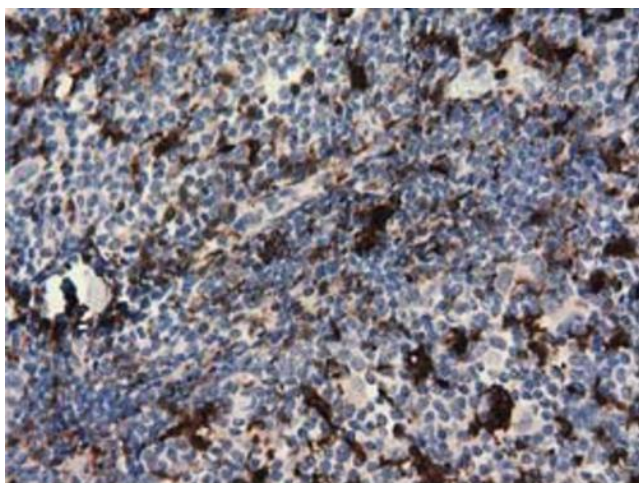
Product images:



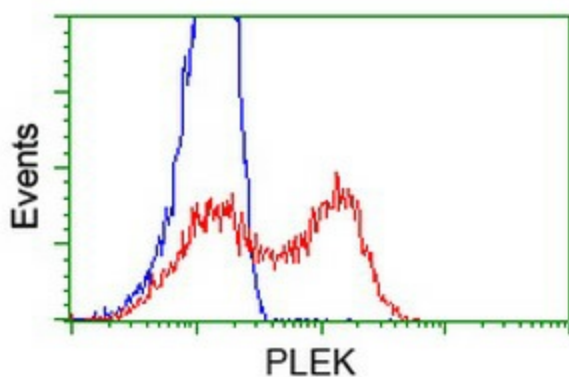
HEK293T cells were transfected with the pCMV6-ENTRY control (Left lane) or pCMV6-ENTRY PLEK ([RC203780], Right lane) cDNA for 48 hrs and lysed. Equivalent amounts of cell lysates (5 ug per lane) were separated by SDS-PAGE and immunoblotted with anti-PLEK. Positive lysates [LY419171] (100ug) and [LC419171] (20ug) can be purchased separately from OriGene.



Immunohistochemical staining of paraffin-embedded Human lymph node tissue within the normal limits using anti-PLEK mouse monoclonal antibody. ([TA500891]). Heat-induced epitope retrieval by EDTA solution buffer pH 8.0 at 120°C for 3 min.



Immunohistochemical staining of paraffin-embedded Human lymphoma tissue using anti-PLEK mouse monoclonal antibody. ([TA500891]). Heat-induced epitope retrieval by EDTA solution buffer pH 8.0 at 120°C for 3 min.



HEK293T cells transfected with either [RC203780] overexpress plasmid (Red) or empty vector control plasmid (Blue) were immunostained by anti-PLEK antibody ([TA500891]), and then analyzed by flow cytometry.