

Product datasheet for **TA500884BM**

Hexokinase II (HK2) Mouse Monoclonal Antibody (HRP conjugated) [Clone ID: OTI4D4]

Product data:

Product Type:	Primary Antibodies
Clone Name:	OTI4D4
Applications:	WB
Recommended Dilution:	WB 1:500
Reactivity:	Human, Mouse, Rat
Host:	Mouse
Isotype:	IgG2b
Clonality:	Monoclonal
Immunogen:	Full length human recombinant protein of human HK2 (NP_000180) produced in HEK293T cell.
Formulation:	PBS (pH 7.3) containing 1% BSA, 50% glycerol.
Concentration:	0.5 mg/ml
Purification:	Purified from mouse ascites fluids or tissue culture supernatant by affinity chromatography (protein A/G)
Conjugation:	HRP
Storage:	Store at -20°C as received.
Stability:	Stable for 12 months from date of receipt.
Predicted Protein Size:	102.4 kDa
Gene Name:	hexokinase 2
Database Link:	NP_000180 Entrez Gene 15277 Mouse Entrez Gene 25059 Rat Entrez Gene 3099 Human P52789
Background:	Hexokinases phosphorylate glucose to produce glucose-6-phosphate, the first step in most glucose metabolism pathways. This gene encodes hexokinase 2, the predominant form found in skeletal muscle. It localizes to the outer membrane of mitochondria. Expression of this gene is insulin-responsive, and studies in rat suggest that it is involved in the increased rate of glycolysis seen in rapidly growing cancer cells.



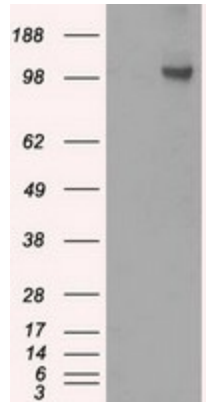
[View online »](#)

Synonyms: HKII; HXK2

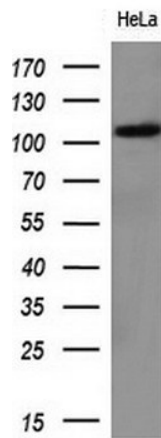
Protein Families: Druggable Genome

Protein Pathways: Amino sugar and nucleotide sugar metabolism, Fructose and mannose metabolism, Galactose metabolism, Glycolysis / Gluconeogenesis, Insulin signaling pathway, Metabolic pathways, Starch and sucrose metabolism, Type II diabetes mellitus

Product images:



HEK293T cells were transfected with the pCMV6-ENTRY control (Left lane) or pCMV6-ENTRY HK2 ([RC209482], Right lane) cDNA for 48 hrs and lysed. Equivalent amounts of cell lysates (5 ug per lane) were separated by SDS-PAGE and immunoblotted with anti-HK2. Positive lysates [LY400068] (100ug) and [LC400068] (20ug) can be purchased separately from OriGene.



Western blot analysis of extracts (10ug) from 1 cell line by using anti-HK2 monoclonal antibody (1:200).