

## Product datasheet for **TA500872AM**

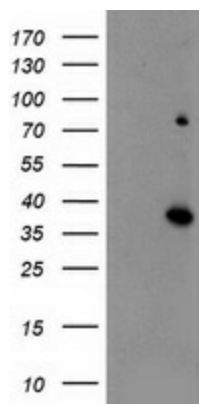
### ELAVL1 Mouse Monoclonal Antibody (Biotin conjugated) [Clone ID: OTI14F11]

#### Product data:

Product Type:	Primary Antibodies
Clone Name:	OTI14F11
Applications:	WB
Recommended Dilution:	WB 1:100
Reactivity:	Human, Mouse, Rat
Host:	Mouse
Isotype:	IgG1
Clonality:	Monoclonal
Immunogen:	Full length human recombinant protein of human ELAVL1 (NP_001410) produced in HEK293T cell.
Formulation:	PBS (pH 7.3) containing 1% BSA, 50% glycerol and 0.02% sodium azide.
Concentration:	0.5 mg/ml
Purification:	Purified from mouse ascites fluids or tissue culture supernatant by affinity chromatography (protein A/G)
Conjugation:	Biotin
Storage:	Store at -20°C as received.
Stability:	Stable for 12 months from date of receipt.
Predicted Protein Size:	36.1 kDa
Gene Name:	ELAV like RNA binding protein 1
Database Link:	<a href="#">NP_001410</a> <a href="#">Entrez Gene 15568 Mouse</a> <a href="#">Entrez Gene 363854 Rat</a> <a href="#">Entrez Gene 1994 Human</a> <a href="#">Q15717</a>
Background:	The protein encoded by this gene is a member of the ELAVL protein family. This encoded protein contains 3 RNA-binding domains and binds cis-acting AU-rich elements. It destabilizes mRNAs and thereby regulates gene expression.
Synonyms:	ELAV1; Hua; HUR; MeIG



[View online »](#)

**Product images:**

HEK293T cells were transfected with the pCMV6-ENTRY control (Left lane) or pCMV6-ENTRY ELAVL1 ([RC201562], Right lane) cDNA for 48 hrs and lysed. Equivalent amounts of cell lysates (5 ug per lane) were separated by SDS-PAGE and immunoblotted with anti-ELAVL1. Positive lysates [LY400549] (100ug) and [LC400549] (20ug) can be purchased separately from OriGene.