

Product datasheet for **TA500865AM**

LOX Mouse Monoclonal Antibody (Biotin conjugated) [Clone ID: OTI4E3]

Product data:

Product Type:	Primary Antibodies
Clone Name:	OTI4E3
Applications:	IF, IHC, WB
Recommended Dilution:	WB 1:500, IHC 1:50, IF 1:100, FLOW 1:100
Reactivity:	Human, Mouse, Rat
Host:	Mouse
Isotype:	IgG1
Clonality:	Monoclonal
Immunogen:	Human recombinant protein fragment corresponding to amino acids 22-168 of human LOX (NP_002308) produced in HEK293T cell.
Formulation:	PBS (pH 7.3) containing 1% BSA, 50% glycerol and 0.02% sodium azide.
Concentration:	0.5 mg/ml
Purification:	Purified from mouse ascites fluids or tissue culture supernatant by affinity chromatography (protein A/G)
Conjugation:	Biotin
Storage:	Store at -20°C as received.
Stability:	Stable for 12 months from date of receipt.
Predicted Protein Size:	46.8 kDa
Gene Name:	lysyl oxidase
Database Link:	NP_002308 Entrez Gene 16948 Mouse Entrez Gene 24914 Rat Entrez Gene 4015 Human P28300



[View online »](#)

Background:

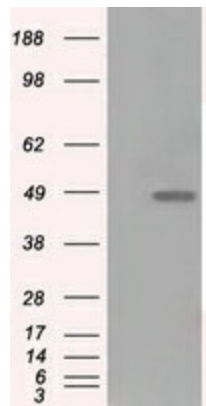
The protein encoded by this gene is an extracellular copper enzyme that initiates the crosslinking of collagens and elastin. The enzyme catalyzes oxidative deamination of the epsilon-amino group in certain lysine and hydroxylysine residues of collagens and lysine residues of elastin. In addition to crosslinking extracellular matrix proteins, the encoded protein may have a role in tumor suppression. Defects in this gene are a cause of autosomal recessive cutis laxa type I (CL type I). Two transcript variants encoding different isoforms have been found for this gene. [provided by RefSeq]

Synonyms:

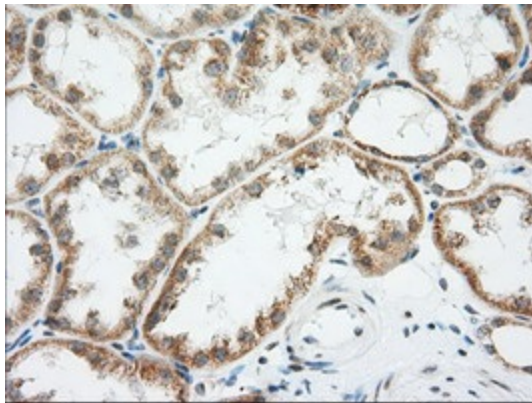
MGC105112

Protein Families:

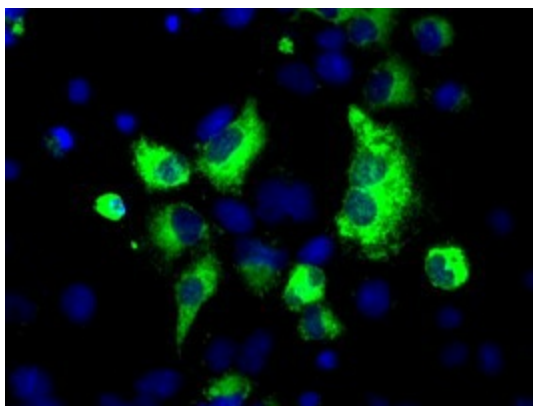
Druggable Genome, Secreted Protein

Product images:

HEK293T cells were transfected with the pCMV6-ENTRY control (Left lane) or pCMV6-ENTRY LOX ([RC213323], Right lane) cDNA for 48 hrs and lysed. Equivalent amounts of cell lysates (5 ug per lane) were separated by SDS-PAGE and immunoblotted with anti-LOX. Positive lysates [LY400843] (100ug) and [LC400843] (20ug) can be purchased separately from OriGene.



Immunohistochemical staining of paraffin-embedded Human Kidney tissue within the normal limits using anti-LOX mouse monoclonal antibody. (Heat-induced epitope retrieval by 10mM citric buffer, pH6.0, 100°C for 10min, [TA500865])



Anti-LOX mouse monoclonal antibody ([TA500865]) immunofluorescent staining of COS7 cells transiently transfected by pCMV6-ENTRY LOX ([RC213323]).