

## Product datasheet for **TA500855S**

### GRASP1 (GRIPAP1) Mouse Monoclonal Antibody [Clone ID: OTI2C11]

#### Product data:

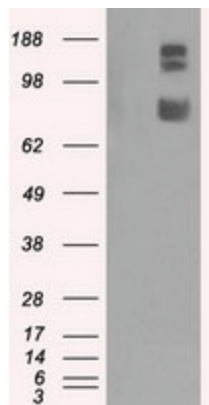
Product Type:	Primary Antibodies
Clone Name:	OTI2C11
Applications:	FC, IF, WB
Recommended Dilution:	WB 1:1000, IF 1:100, Flow 1:100
Reactivity:	Human, Mouse, Rat
Host:	Mouse
Isotype:	IgG1
Clonality:	Monoclonal
Immunogen:	Full length human recombinant protein of human GRIPAP1 (NP_064522) produced in HEK293T cell.
Formulation:	PBS (pH 7.3) containing 1% BSA, 50% glycerol and 0.02% sodium azide.
Concentration:	0.5 mg/ml
Purification:	Purified from mouse ascites fluids or tissue culture supernatant by affinity chromatography (protein A/G)
Conjugation:	Unconjugated
Storage:	Store at -20°C as received.
Stability:	Stable for 12 months from date of receipt.
Predicted Protein Size:	96.0 kDa
Gene Name:	GRIP1 associated protein 1
Database Link:	<a href="#">NP_064522</a> <a href="#">Entrez Gene 54645 Mouse</a> <a href="#">Entrez Gene 116493 Rat</a> <a href="#">Entrez Gene 56850 Human</a> <a href="#">Q4V328</a>
Background:	This gene encodes a guanine nucleotide exchange factor for the Ras family of small G proteins (RasGEF). In brain studies, the encoded protein was found with the GRIP/AMPA receptor complex. Multiple alternatively spliced transcript variants have been described that encode different protein isoforms; however, the full-length nature and biological validity of all of these variants have not been determined



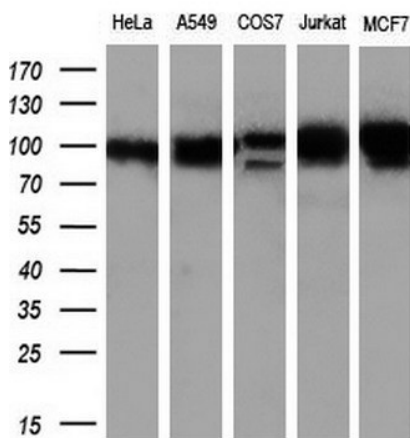
[View online »](#)

Synonyms: GRASP-1  
 Protein Families: Druggable Genome

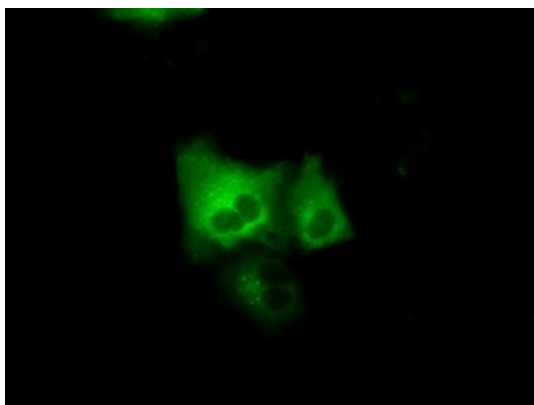
**Product images:**



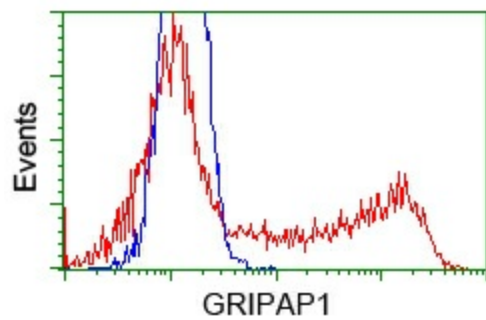
HEK293T cells were transfected with the pCMV6-ENTRY control (Left lane) or pCMV6-ENTRY GRIPAP1 ([RC210936], Right lane) cDNA for 48 hrs and lysed. Equivalent amounts of cell lysates (5 ug per lane) were separated by SDS-PAGE and immunoblotted with anti-GRIPAP1. Positive lysates [LY402754] (100ug) and [LC402754] (20ug) can be purchased separately from OriGene.



Western blot analysis of extracts (10ug) from 5 different cell lines by using anti-GRIPAP1 monoclonal antibody (1:200).



Anti-GRIPAP1 mouse monoclonal antibody ([TA500855]) immunofluorescent staining of COS7 cells transiently transfected by pCMV6-ENTRY GRIPAP1 ([RC210936]).



HEK293T cells transfected with either pCMV6-ENTRY GRIPAP1 ([RC210936]) (Red) or empty vector control plasmid (Blue) were immunostained with anti-GRIPAP1 mouse monoclonal ([TA500855]), and then analyzed by flow cytometry.